

Interface®



Interface, Inc.
1280 W Peachtree St. NW
Atlanta, GA 30309
United States

T +1 706.882.1891
www.interface.com

Product to be Optimized: Luxury Vinyl Tile (LVT) 4.5 mm

Impact information and Reduction Summary

Manufacturer:	Interface
Manufacturer Contact Information:	Lisa Conway, VP, Sustainability, Interface Americas sustainability@interface.com
Product Name:	Luxury Vinyl Tile (LVT) 4.5 mm
Product Type:	Commercial Building Product
Product Description:	Commercial Modular Resilient Flooring
Manufacturing Location:	South Korea
Title of the Environmental Product Declaration that the Assessment is Based Upon:	Interface (2017). Modular Resilient Flooring; LVT (4.5-5 mm) EPD Declaration Number: 4787521006.117.1
Life Cycle Assessment/ Environmental Product Declaration Type:	<ul style="list-style-type: none">▪ Publicly available, critically reviewed LCA (conforming to ISO 14044)▪ Internally verified LCA with a product specific EPD (conforming to ISO 4025, EN 15804, or ISO 21930)▪ Product specific Type III EPD (external verification of LCA and EPD)
Link to publicly available EPD	Retrieved from www.interface.com/epd Link to EPD for LVT (4.5 mm)
PCR	IBU and UL Environment. PCR for Building-Related Products and Services - Part A: Calculation rules for the LCA and Requirements Project Report, (IBU/ULE, Version 1.306.19.2014) IBU. Part B: Requirements on the EPD for Floor coverings (IBU, V1.6, 07.30.2014)
Date of EPD:	January 20, 2017



Interface®

Product to be Optimized: Luxury Vinyl Tile (LVT) 4.5 mm Impact information and Reduction Summary

Scope:

Description of the system boundary (X = included in LCA; MND = module not declared)

PRODUCT STAGE		CONSTRUCT/ON PROCESS STAGE	USE STAGE							END OF LIFE STAGE				BENEFITS AND LOADS (BEYOND THE SYSTEM BOUNDARY)		
Raw material supply	Transport	Manufacturing	Transport from the plant to the site	Assembly	Use	Maintenance	Repair	Replacement ¹⁾	Re/Installation ¹⁾	Operational energy use	Operational water use	Deconstruction/demolition	Transport	Waste processing	Disposal	Reuse/recycling/potential
A1	A2	A3	A4	A5	B1	B2	B3	B4	B5	B6	B7	C1	C2	C3	C4	D
X	X	X	X	X	MND	X	MND	MND	MND	MND	MND	MND	X	MND	X	MND

Describe how the scope of the EPD aligns with actions identified in this Action Plan

LCA Software and Version:

LCA Dataset:

Action Plan Creation Date:

Action Plan Expiration Date:

Is this Action Plan applicable to all products listed in the corresponding EPD, or only a subset?

Summary of Largest Life Cycle Impacts identified in the Analysis

The specific actions identified in the Action Plan were identified through investigation of delivery module A1 (Raw Material Supply), which was required in the PCR, analyzed in the LCA, and presented in the EPD.

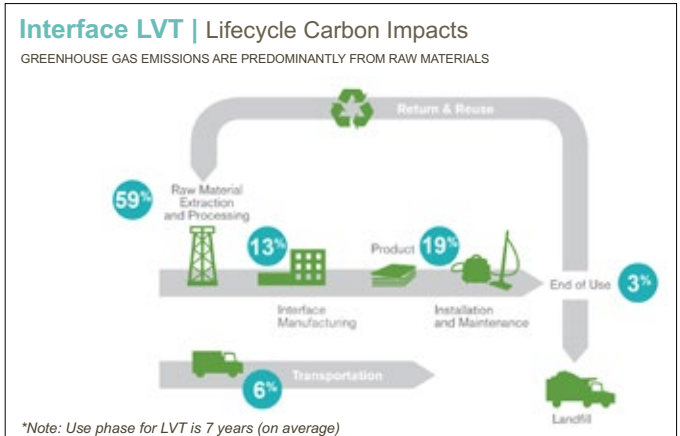
GaBi v6

GaBi Service Pack 34

January 4, 2021

December 31, 2023 or until publication of revised product-specific EPD

Yes, all products



Analysis data taken from 2019 Global Carbon Neutral Floors LCA data.

Analysis of LCA data shows that over half of the GWP impact of making this product is in the Raw Material Extraction and Process stage (A1). Therefore, the greatest opportunity for substantial reduction of GWP is in changing the type of raw materials used in the formulation to lower GWP materials or working with suppliers to change the GHG intensity of the processes used to extract and process the raw materials used to make our LVT. We estimate that planned reformulation of our LVT to replace higher GWP raw materials with lower GWP materials will reduce product GWP by at least 10% by January 2022.

Narrative Description of the Impact Areas Targeted for Reduction



Interface®

Product to be Optimized: Luxury Vinyl Tile (LVT) 4.5 mm

Impact information and Reduction Summary


Specific steps	Optimization Description	Responsible Team	Timeline
	Confirm performance and availability of alternative raw materials	Procurement/R&D	By December 2021
	Reformulation of LVT to incorporate lower GWP raw materials	Procurement Manufacturing	By December 2022

This Action Plan was prepared by:



Aidan Ganzert,
Life Cycle Assessment Specialist,
Interface, Inc

This Action Plan was confirmed by:



Lisa Conway,
VP, Sustainability,
Interface Americas