



Works Unite

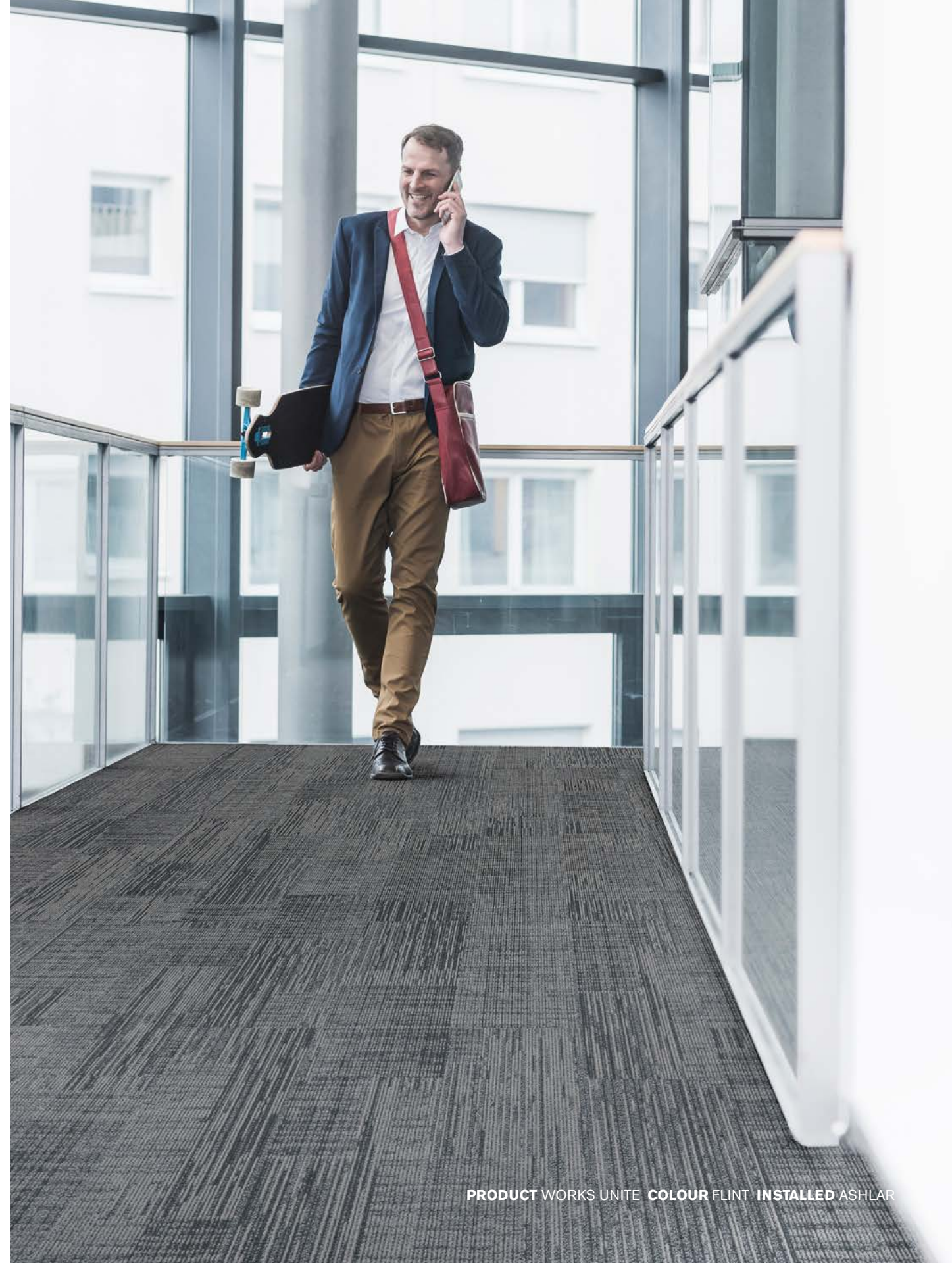
Interface®

Works Unite. Innovative differences.

Naturally opposing views can create true moments of innovation. Free flowing thoughts, emerging from an ideation session, will blur all lines to really push the envelope. When such individual contributions brilliantly combine, real feelings of group unity develop. Everyone owns the idea. In a similar way, Works Unite innovatively fuses contrasting, linear and organic patterns, seamlessly merging them into a plank format. Texture is grouped with height variation to create smart, layering effects and a sense of moving forward. Works Unite is the intuitive way of creating spaces where opposites attract, beautifully.

The new Works Series has one vision, to work smarter together for every space. Every detail of Works Series works smarter to give greater versatility and drive value at the same time.

Combined with your ideas, each floor can create +Positive spaces™ which help their users thrive by letting them live, work, learn and regain inspiration every day. Each Works Series tile will prove to be the smart move for our planet's future too. As with every Interface product, they are Carbon Neutral, so they help you lower your carbon footprint with one positive step.

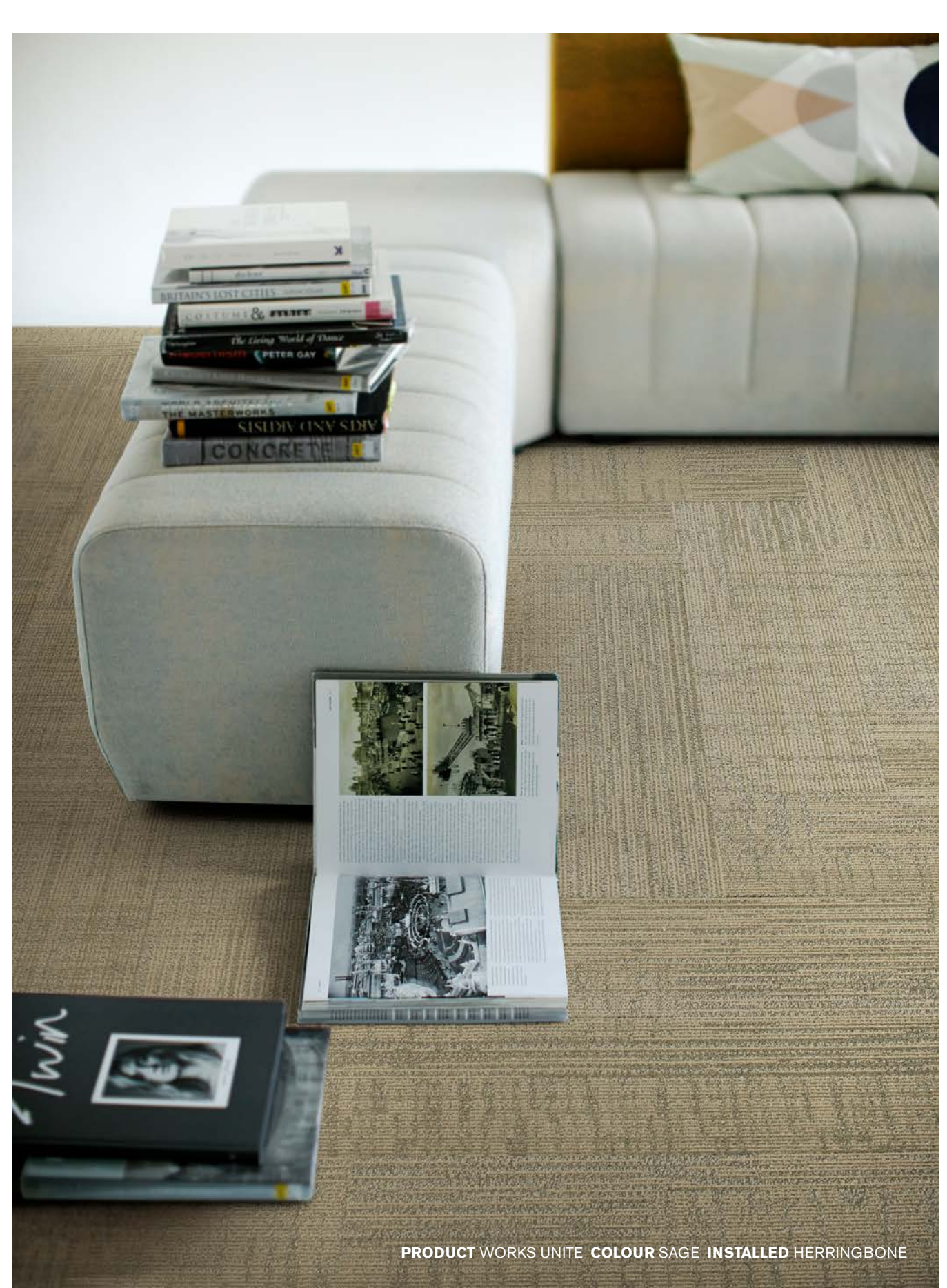




CARPET PRODUCT WORKS UNITE COLOUR MIST INSTALLED HERRINGBONE
CARPET PRODUCT ON LINE COLOUR CITRON INSTALLED ASHLAR
LVT PRODUCT DRAWN LINES COLOUR DIAMOND AQUAMARINE INSTALLED PATTERN BY TILE



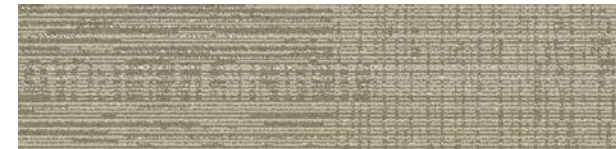
CARPET PRODUCT WORKS UNITE COLOUR DOVE INSTALLED ASHLAR
LVT PRODUCT DRAWN LINES COLOUR AMBER INSTALLED ASHLAR



PRODUCT WORKS UNITE COLOUR SAGE INSTALLED HERRINGBONE



Works Unite™ Colour Range



2396001 Sage



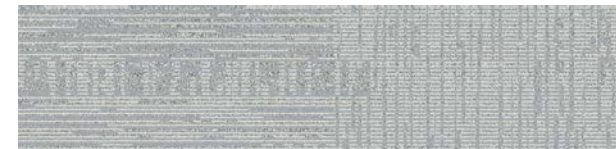
2396005 Anchor



2396002 Muslin



2396006 Basalt



2396003 Dove



2396007 Flint



2396004 Mist



2396008 Raisin

Specification

Style Code	2396
Product Construction	Tufted Loop Pile
Yarn System	100% Solution Dyed Nylon
Machine Gauge	1/12
Pile Thickness	2.5 ± 0.5mm (Asia) 2.2 ± 0.5mm (Australia & New Zealand)
Total Thickness	5.5 ± 0.5mm (Asia) 5.1 ± 0.5mm (Australia & New Zealand)
Tile Size	25 x 100cm
Area of Use	Commercial – General Use
ACCS Grading	Commercial Extra Heavy Duty & Stairs
(Australia & New Zealand Only)	
Lifetime Antimicrobial	Intersept®

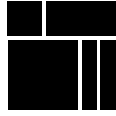
View the full product specification on [interface.com](https://www.interface.com)

Installation Methods



PRODUCT WORKS UNITE COLOUR BASALT INSTALLED ASHLAR

Why Our Modular Flooring?



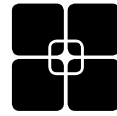
Modular Flooring

Performance and flexibility. Interface's standard backing systems set the industry standard for modular performance. Tiles stay on the floor with no upcurl, no tapping and no rippling effect, yet are easy to selectively replace. Our modular carpet is easier to handle than bulky roll carpet and produces an average of just 2-5% waste compared to roll carpet's average of 15%. And it installs seamlessly with our LVT, no transition strips needed.



Carbon Neutral Floors™

Create a climate fit for life. All Interface flooring sold globally is third party verified carbon neutral across the entire product lifecycle. We've taken a holistic approach to achieve carbon neutrality, first through reducing the carbon footprint of our products and then using carbon offsets for the remainder, including the emissions from raw materials, our manufacturing processes and product use to end of life.



TacTiles®

No glue installation. Our revolutionary TacTiles installation system eliminates the need for glue, adhering tiles securely together to form a floor that "floats" for greater flexibility, easier replacement and long-term performance. The result? Less mess, less waste and virtually no VOCs, not to mention an environmental footprint that is over 90% lower than that of traditional glue adhesives.



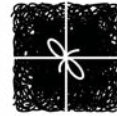
Intersept®

Mold protection. Our proprietary preservative, Intersept, protects our modular carpet against mould growth and odour-causing bacteria—guaranteed. Intersept treated carpet, with proper maintenance, shows no mould or bacterial growth when tested as per the ASTM E2471 Standard Test Method. Intersept is EPA-approved for safe use in carpet, water insoluble and contains no halogens, heavy metals, phenols or formaldehyde.



Protekt®

Stain protection. The life and performance of your flooring is extended with Protekt, our patented stain resistant coating. Protekt uses advanced technology to provide a lasting barrier against permanent soiling and staining, which simplifies the cleaning process and enhances the longevity of your carpet.



ReEntry

At Interface, an *end of life solution* of our products is a reality. ReEntry is our innovative programme to reclaim materials used in our product. Taking back our product at end of life is a service we provide our customers to ensure that none of the products they use will end up in landfill. Whether it is recycling into new product or re-purposing, we see our customer's waste as an opportunity for new product life.



Health Product Declaration (HPD) –

A transparency tool for evaluating whether a product supports Green Chemistry. As part of our work on Health and Materials, Interface continuously reduces the environmental and health impacts of our products through elimination of materials of concern.



15-Year Warranty

Interface products are warranted for 15 years against excessive surface wear, edge ravel, backing separation, shrinking, stretching and static electricity even under castor chair conditions.



Local Manufacturing

We combine local responsiveness with a global experience. Being part of the same communities as our customers, we foster collaborative, committed, and productive relationships. Our carpet tiles are manufactured in Australia and China, contributing to local economies and the environment.

Third Party Certifications



Environmental Product Declaration (EPD)

The Environmental Product Declaration (EPD) is a third party verified environmental certification classified as Type III that quantifies and verifies the lifecycle impacts of products and goods according to the International Standards Organization (ISO) 14025, 14040, 14044 and EN 15804. EPDs help customers that are environmentally driven to evaluate the performance of a product and to make the best decision when choosing a product. All Interface products have EPDs.



Global GreenTag GreenRate - Level A

Global GreenTag's GreenRate certification is a product rating system recognised by the Green Building Council of Australia, New Zealand and South Africa. It has been set up to meet the criteria of the Green Star® "Sustainable Products" credits. All Interface products are certified "Level A".



Environmental Certification Scheme - Level 4

ECS-certified carpet manufacturers must adhere to a code of practice that details performance standards for raw materials, manufacturing, in-service use and end-of-life treatment. Interface flooring holds the highest grading under ECS.



NSF Certification

NSF International develops public health standards and certification programs that help protect the world's food, water, consumer products and environment. Interface carpet tile products are certified "Gold".



CRI Green Label Plus

The Carpet and Rug Institute (CRI) Green Label Plus sets higher standards for indoor air quality and ensures that customers are purchasing the very lowest emitting products on the market. Interface Carpet Tiles and TacTiles have fulfilled the requirements for this certification.



Singapore Green Building Product (SGBP)

The SGBP certification is designed to evaluate and certify building products that meet specific sustainability and environmental performance criteria. The certification scheme helps building professionals identify products that are sustainable and more carbon efficient. Interface carpet tile products are certified "Leader" and LVT products are at "Excellent" Level.



Best Practice Guidelines for PVC

A comprehensive standard for better PVC developed by the Green Building Council of Australia under its Green Star programme. Interface holds Lloyd's Statement of Compliance (Green Building Council of Australia Best Practice Guidelines 2013) for Best Practice PVC for all products made in Australia.

Our EPDs and certifications contribute credits towards Green Building Council's Green Star® rating system.

Green Star credits are approved by the Green Building Councils of Australia and New Zealand. The internationally-recognised Green Star rating system provides independent verification that a building or community project is sustainable. Developed by the Green Building Council of Australia, Green Star is Australia's only national, voluntary, sustainability rating system for buildings and communities.



Carbon Neutral Floors™

www.interface.com

Australia

Interface Australia
local toll free: 1800 804 361

India

Interface India
tel: +91 80 4613 1313

South East Asia

Interface Asia
tel: +65 6478 1510

South Korea

Interface South Korea
tel: +82 2 555 1734

Japan

Interface Japan
tel: +81 3 5733 5211

Beijing

Interface China
tel: +86 10 6590 7810

Hong Kong

Interface China
tel: +852 2802 0838

Shanghai

Interface China
tel: +86 21 6340 3868

11/2023
SF2396T0



Climate change is undeniable. And reversible. Our mission is to prove it.
Join the #ClimateTakeBack and help create a climate fit for life.