



Printed on 50% post consumer waste (PCW) fiber manufactured using wind power.

# Silk Complex Collection | LVT



Climate change is undeniable. And reversible. Our mission is to prove it. Join the #ClimateTakeBack and help create a climate fit for life.

Dither Silk  
Shantung  
Silk Age

[interface.com](https://www.interface.com)

**United States Headquarters**  
1280 West Peachtree Street NW  
Atlanta, GA 30309  
1.800.634.6032

**Canadian Headquarters**  
233 Lahr Drive  
Belleville, ON K8N 5S2  
1.800.267.2149 ext. 52128

CIM# IFS00929 06/2023

**Interface®**



**Find elegance in opposition through mattes and metallics.**

There are two sides to every story—and Interface's Silk Complex™ LVT collection tells a particularly nuanced narrative. Its multifaceted materiality merges opposing textures, patterns and colors to create drama that can be dialed up or down. The resulting contrast in surface reflectance ushers in light, capturing moments on the floor like never before.

Each product works beautifully alone yet transforms when used together. Shantung™, the foundational brushed solid, comes in twelve colors rooted in matte wood tones. Dither Silk™ introduces bronze, silver and gold inks in its overlay, allowing Shantung's matte, brushed solid to peek through its dithering shiny flecks. Silk Age™ ushers in a truly gilded look, leaning into luxury with a full metallic pattern. From soft, subtle tone-on-tone looks for restorative environments to bold, dramatic moments that punctuate places and spaces, the Silk Complex Collection offers it all.

Interface LVT contains 39% recycled content and is carbon neutral across the full product life cycle through our Carbon Neutral Floors™ program.

(COVER) **PRODUCT** SILK AGE **COLOR** A02902 BRONZE LOTUS **INSTALLED** ASHLAR  
**PRODUCT** DITHER SILK **COLOR** A02802 BRONZE LOTUS **INSTALLED** PATTERN BY TILE  
**PRODUCT** SHANTUNG **COLOR** A02712 LOTUS **INSTALLED** ASHLAR



**PRODUCT** SILK AGE **COLOR** A02901 SILVER LOTUS **INSTALLED** ASHLAR  
**PRODUCT** DITHER SILK **COLOR** A02801 SILVER LOTUS **INSTALLED** PATTERN BY TILE  
**PRODUCT** SHANTUNG **COLOR** A02712 LOTUS **INSTALLED** ASHLAR





Accent ▪ Transition ▪ Neutral ▪ Transition ▪ Accent



**Silk Age**

**Dither Silk**

**Shantung**

**Dither Silk**

**Silk Age**

A02903  
Silver Orchid

A02803  
Silver Orchid

A02704  
Orchid

A02804  
Golden Orchid

A02904  
Golden Orchid

Shantung colors (Lotus, Orchid and Black Rose) serve as a base for transitioning to the other products in the collection. Shown here in color Orchid, we see how Dither Silk and Silk Age move from matte plus metallic to a full metallic pattern.

**PRODUCT** SHANTUNG **COLORS** A02711 BLUEBELL, A02708 BLACK ROSE **INSTALLED** ASHLAR  
**PRODUCT** DITHER SILK **COLOR** A02805 EBONY BLACK ROSE **INSTALLED** PATTERN BY TILE  
**PRODUCT** SILK AGE **COLOR** A02905 EBONY BLACK ROSE **INSTALLED** ASHLAR



## Shantung™ Color Range



A02705 THISTLE



A02709 PAPER WHITE



A02706 DAHLIA



A02710 SILVER TREE



A02712 LOTUS



A02704 ORCHID



A02701 BEECHNUT



A02707 SWEET PEA



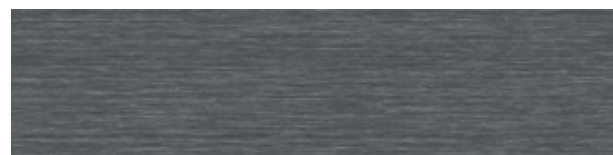
A02702 SESAME



A02711 BLUEBELL



A02703 ZINNIA



A02708 BLACK ROSE







## Dither Silk™ Color Range

---



A02801 SILVER LOTUS



A02802 BRONZE LOTUS



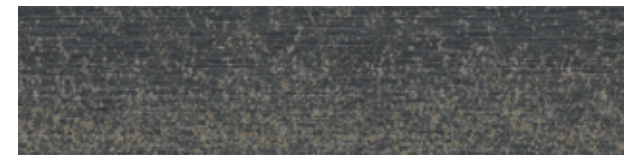
A02803 SILVER ORCHID



A02804 GOLDEN ORCHID



A02805 EBONY BLACK ROSE



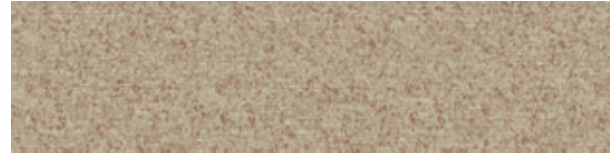
A02806 GOLDEN BLACK ROSE



## Silk Age™ Color Range



A02901 SILVER LOTUS



A02902 BRONZE LOTUS



A02903 SILVER ORCHID



A02904 GOLDEN ORCHID



A02905 EBONY BLACK ROSE



A02906 GOLDEN BLACK ROSE







## Specifications

Product Number	A027
Shantung	A028
Dither Silk	A029
Silk Age	
Product Construction	High Performance Luxury Vinyl Tile
Class/ASTM F1700	Class III Printed Vinyl Tile
Wear Layer Thickness	22 mil
Total Thickness	4.5 mm
Backing Class	Commercial Grade
Finish	Ceramor™ Coating
Nominal Dimensions	
Shantung	25 cm x 1 m (9.845 in x 39.38 in)
Dither Silk	25 cm x 1 m (9.845 in x 39.38 in)
Silk Age	25 cm x 1 m (9.845 in x 39.38 in)
Total Recycled Content (Pre Consumer)	39%
Indoor Air Quality	GREENGUARD Gold FloorScore® Certified CDPH 01350 Compliant Carbon Neutral Floors™
Full Life Cycle Carbon Emissions	
Environmental Certifications	NSF/ANSI 332 Silver
LEED v4	Contributes to multiple IEQ and MR credits

*View the full product specification on [interface.com](https://www.interface.com)*

## Installation Methods



ASHLAR



HERRINGBONE

Shantung



**BROWSE IMAGES**  
**ORDER SAMPLES**

Dither Silk



**BROWSE IMAGES**  
**ORDER SAMPLES**

Silk Age



**BROWSE IMAGES**  
**ORDER SAMPLES**

**PRODUCT** SILK AGE **COLOR** A02904 GOLDEN ORCHID **INSTALLED** ASHLAR  
**PRODUCT** DITHER SILK **COLOR** A02804 GOLDEN ORCHID **INSTALLED** PATTERN BY TILE  
**PRODUCT** SHANTUNG **COLOR** A02704 ORCHID **INSTALLED** ASHLAR  
**PRODUCT** DITHER SILK **COLOR** A02803 SILVER ORCHID **INSTALLED** PATTERN BY TILE  
**PRODUCT** SILK AGE **COLOR** A02903 SILVER ORCHID **INSTALLED** ASHLAR

## Why Our Modular Resilient Sound Choice™ 4.5 mm LVT?



### Integrated System

*Save time and look good doing it.* Our Sound Choice LVT integrates with our full product portfolio, allowing you to streamline specification and installation of your floorplate. Add our modular carpet for an inset rug or an adjacent field – no transition strip required.



### Easy Maintenance

*Create a unique look that lasts.* Interface Sound Choice LVT extends the life of your floor. From simple maintenance like damp mopping to selectively replacing damaged tiles, your flooring investment will stand the test of time - beautifully and effortlessly.



### ReEntry™

*Keep flooring out of the landfill.* Interface Sound Choice™ LVT is produced with a controlled material stream, so it is recyclable along with Interface carpet tile through our ReEntry™ program. ReEntry is the only third party certified recycling system among North American flooring manufacturers.



### Noise Reduction

*Silence distractions.* Sound Choice is a specially formulated backing for superior noise reduction, offering you best-in-class impact sound reduction and floor to floor sound transmission.

### High Performance from Top to Bottom



- 1. Ceramor™ Coating.** Minimizes everyday scratching and scuffing.
- 2. Wear Layer.** High quality 22 mil layer enabling 15 years of resilience and performance.
- 3. Print Film.** Provides outstanding visuals of natural materials and Interface innovative designs.
- 4. Core Sheet.** Creates a thickness for a stronger core and reduces telegraphing from beneath.
- 5. Fiberglass.** Adds dimensional stability and controlled flexibility.
- 6. Core Sheet.** Creates a thickness for a stronger core and reduces telegraphing from beneath.
- 7. Sound Choice Backing.** Provides comfort and superior acoustic performance.

**Interface Sound Choice LVT and carpet tile allow you to seamlessly move from hard to soft surfaces. No transition strip needed.**



### Help Lower Your Carbon Footprint

Like all the flooring products we sell, Interface LVT is carbon neutral across its full product life cycle through our third party verified Carbon Neutral Floors™ program. To find out more, visit [interface.com/carbonneutral](http://interface.com/carbonneutral)



### Health Product Declaration (HPD)

A transparency tool for evaluating if a product includes materials of concern and whether it supports Green Chemistry.



### NSF/ANSI 332 Silver

This standard evaluates the environmental impact of resilient floor covering for its entire life cycle.



### Environmental Product Declaration (EPD)

A third-party verified statement of product ingredients and environmental impacts over the entire life cycle of a product.



### GREENGUARD Gold & FloorScore®

Meeting the highest standards for indoor air quality and assuring very low emissions of VOCs, Interface LVT is GREENGUARD Gold and FloorScore® Certified and CDPH 01350 compliant.

### 📍 Samples

Register and order samples at [interface.com](http://interface.com). Not near a computer? You can also request samples by calling one of the numbers below.

United States  
1.877.605.1500

Canada  
1.866.398.3192

### interface.com

Do more on [interface.com](http://interface.com)

- Browse products and order samples
- Save and share favorites
- See images of products in a variety of room scenes
- Browse floor designs, change colors, upload your own image, download and share
- Get full specifications, sustainability certifications and more
- Check order status and inventory availability
- Sign up to get the latest information on Interface products and news

We have tried our very best to accurately represent product colors. However, due to the nature of printed materials, color of actual products may vary slightly. Please request a sample to see actual product color.

All product specifications reflect averages derived from product sample testing, are subject to normal manufacturing and testing tolerances and inherent pattern variances, and may be changed without notice. For more information about these and other important attributes of the product(s) described herein, including recycled content and product warranty information, please see [interface.com/disclaimer](http://interface.com/disclaimer).