



Rising Signs Collection

Spandrel
Play The Angle
Karmic Relief
Angle Up
Binary Code
Up at Dawn
Proportional
Upward Bound

Interface[®]

A sign of what's to come has arrived.

RISING SIGNS™



The right sign can lift spirits, spark ideas, even change the world. From neighbors banding together to plant trees to strangers donating to the same cause, the signs are everywhere—people are gathering for the greater good. Look around and see. All signs point to progress.

Are you ready to rise to the occasion?



Rising Signs™ Collection

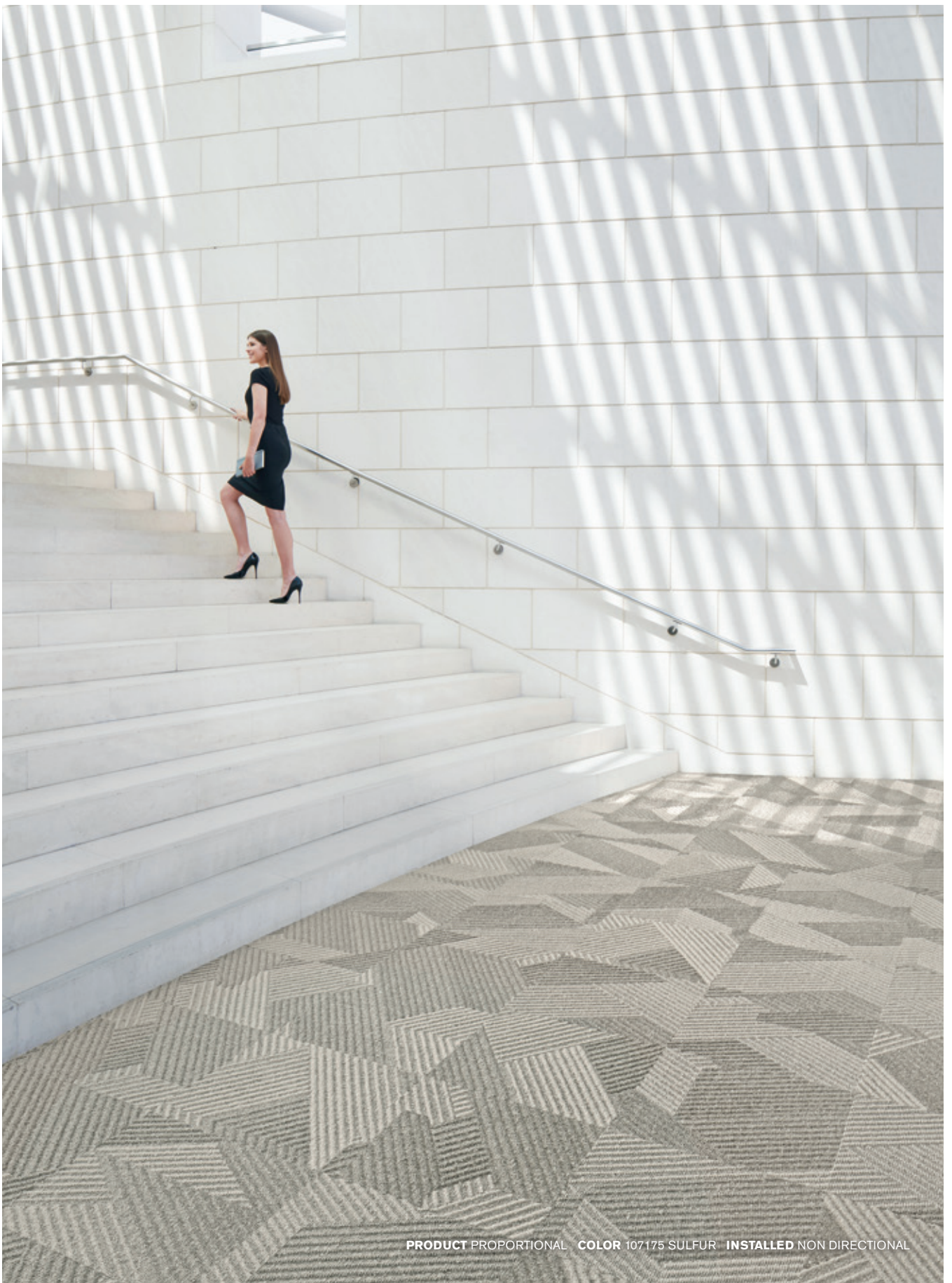
There's a certain beauty in all the pieces coming together perfectly to make a greater whole. The Rising Signs Collection features eight modern carpet products to elevate your space—each uniquely designed to work together in infinite combinations. Bold, angular lines are inspired by the positive angles of architecture, reminiscent of the fire escapes and majestic tension bridges that connect us to the airy outdoors, while large-scale geometric shapes make a striking impression in styles like Play the Angle™, Proportional™ and Upward Bound™. Both Up at Dawn™ and Angle Up™ provide a soft, more organic counterbalance, infusing a biophilic perspective. The collection takes a modern, on-trend approach to color, pairing eye-catching jewel tones with earthy, calming neutrals.

All signs point forward—the direction of progress, of advancement. When you specify flooring from Interface, you're selecting products that are carbon neutral across their full product life cycle through our third party verified Carbon Neutral Floors™ program. Move forward with Interface.



PRODUCT UPWARD BOUND COLOR 107180 XENON INSTALLED NON DIRECTIONAL



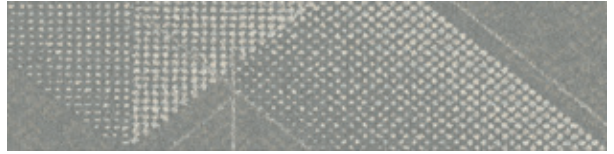


PRODUCT PROPORTIONAL COLOR 107175 SULFUR INSTALLED NON DIRECTIONAL

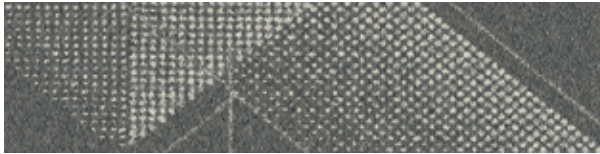
Spandrel™ Colorline



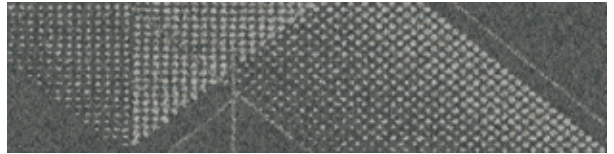
107151 SULFUR



107152 OXYGEN



107153 SELENIUM



107154 PHOSPHORUS



107155 NITROGEN



107156 CARBON

Specifications

Modular, 25cm x 1m	139340AK0G
Backing System	CQuest™GB
Yarn Manufacturer	Aquafil
Yarn System	100% Recycled Content Nylon
Color System	100% Solution Dyed
Construction	Tufted Sheared
Preservative Protection	Intersept®
Soil/Stain Protection	Protek2™
Pile Thickness	0.142 in., 3.6 mm
Pile Density	7,099
Total Recycled Content	84%
Indoor Air Quality	CRI Green Label Plus #GLP0820 CDPH 01350

Installation Methods



ASHLAR



HERRINGBONE

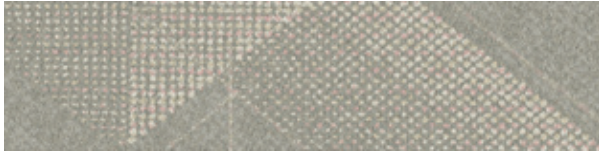


BROWSE IMAGES
ORDER SAMPLES

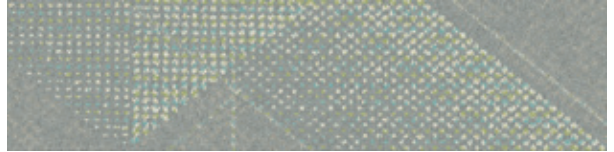


PRODUCT SPANDREL COLORS 107156 CARBON, 107162 COBALT INSTALLED ASHLAR

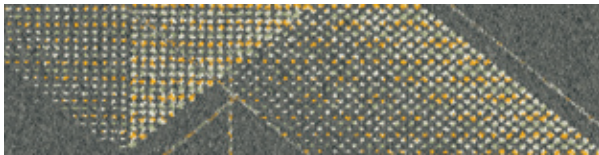
Spandrel™ Colorline (cont'd)



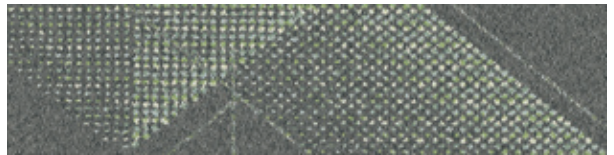
107157 RHODIUM



107158 TITANIUM



107159 GOLD



107160 BERYLLIUM



107161 CHROMIUM



107162 COBALT

Specifications

Modular, 25cm x 1m	139340AK0G
Backing System	CQuest™GB
Yarn Manufacturer	Aquafil
Yarn System	100% Recycled Content Nylon
Color System	100% Solution Dyed
Construction	Tufted Sheared
Preservative Protection	Intersept®
Soil/Stain Protection	Protek2™
Pile Thickness	0.142 in., 3.6 mm
Pile Density	7,099
Total Recycled Content	84%
Indoor Air Quality	CRI Green Label Plus #GLP0820 CDPH 01350

Installation Methods



ASHLAR



HERRINGBONE



BROWSE IMAGES
ORDER SAMPLES



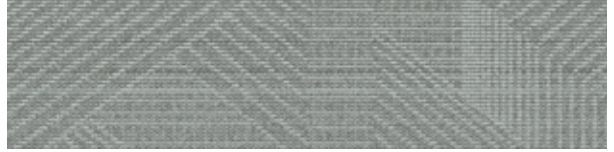
PRODUCT SPANDREL COLOR 107160 BERYLLIUM
PRODUCT PLAY THE ANGLE COLOR 107195 BERYLLIUM INSTALLED ASHLAR



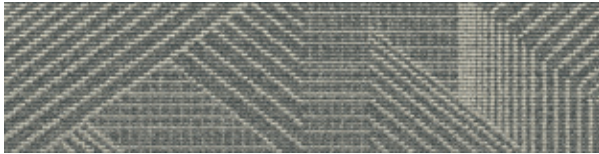
Play the Angle™ Colorline



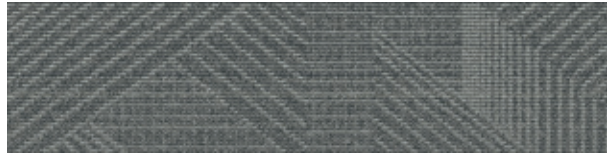
107186 SULFUR



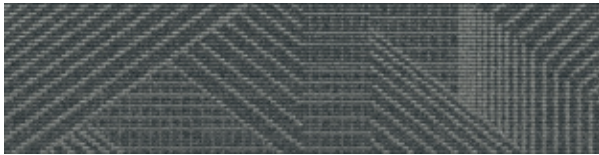
107187 OXYGEN



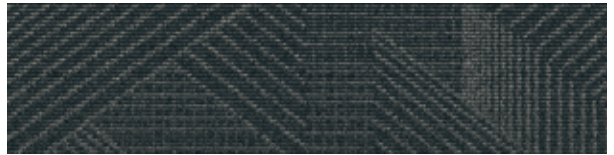
107188 SELENIUM



107189 PHOSPHORUS



107190 NITROGEN



107191 CARBON

Specifications

Modular, 25cm x 1m	147590AK0G
Backing System	CQuest™GB
Yarn Manufacturer	Aquafil
Yarn System	100% Recycled Content Nylon
Color System	100% Solution Dyed
Construction	Tufted Textured Loop
Preservative Protection	Intersept®
Soil/Stain Protection	Protek2™
Pile Thickness	0.116 in., 2.9 mm
Pile Density	6,517
Total Recycled Content	84%
Indoor Air Quality	CRI Green Label Plus #GLP0820 CDPH 01350

Installation Methods



ASHLAR



HERRINGBONE



BROWSE IMAGES
ORDER SAMPLES



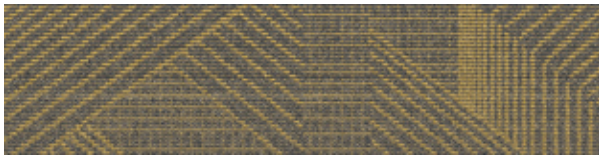
Play the Angle™ Colorline (cont'd)



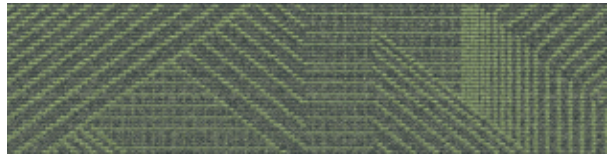
107192 RHODIUM



107193 TITANIUM



107194 GOLD



107195 BERYLLIUM



107196 CHROMIUM



107197 COBALT

Specifications

Modular, 25cm x 1m	147590AK0G
Backing System	CQuest™GB
Yarn Manufacturer	Aquafil
Yarn System	100% Recycled Content Nylon
Color System	100% Solution Dyed
Construction	Tufted Textured Loop
Preservative Protection	Intersept®
Soil/Stain Protection	Protek2™
Pile Thickness	0.116 in., 2.9 mm
Pile Density	6,517
Total Recycled Content	84%
Indoor Air Quality	CRI Green Label Plus #GLP0820 CDPH 01350

Installation Methods



ASHLAR



HERRINGBONE



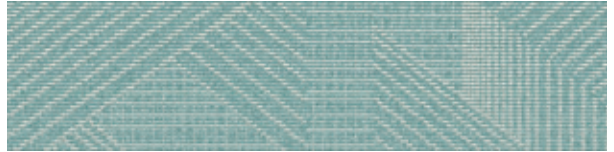
BROWSE IMAGES
ORDER SAMPLES



Play the Angle™ Colorline (cont'd)



107198 HELIUM



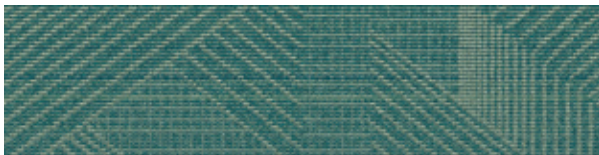
107199 XENON



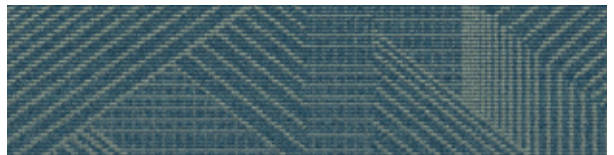
107200 HALOGEN



107201 KRYPTON



107202 CUPRIC



107203 INDIUM

Specifications

Modular, 25cm x 1m	147590AK0G
Backing System	CQuest™GB
Yarn Manufacturer	Aquafil
Yarn System	100% Recycled Content Nylon
Color System	100% Solution Dyed
Construction	Tufted Textured Loop
Preservative Protection	Intersept®
Soil/Stain Protection	Protek2™
Pile Thickness	0.116 in., 2.9 mm
Pile Density	6,517
Total Recycled Content	84%
Indoor Air Quality	CRI Green Label Plus #GLP0820 CDPH 01350

Installation Methods



ASHLAR



HERRINGBONE



BROWSE IMAGES
ORDER SAMPLES



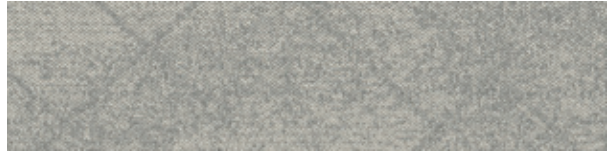


PRODUCT SPANDREL - COLOR 107156 SELENIUM
PRODUCT PLAY THE ANGLE - COLOR 107188 SELENIUM - INSTALLED ASHLAR

Angle Up™ Colorline



107204 SULFUR



107205 OXYGEN



107206 SELENIUM



107207 PHOSPHORUS



107208 NITROGEN



107209 CARBON

Specifications

Modular, 25cm x 1m	147600AK0G
Backing System	CQuest™GB
Yarn Manufacturer	Aquafil
Yarn System	100% Recycled Content Nylon
Color System	100% Solution Dyed
Construction	Tufted Textured Loop
Preservative Protection	Intersept®
Soil/Stain Protection	Protek2™
Pile Thickness	0.095 in., 2.4 mm
Pile Density	6,821
Total Recycled Content	83%
Indoor Air Quality	CRI Green Label Plus #GLP0820 CDPH 01350

Installation Methods



ASHLAR



HERRINGBONE



BROWSE IMAGES
ORDER SAMPLES



Up at Dawn™ Colorline



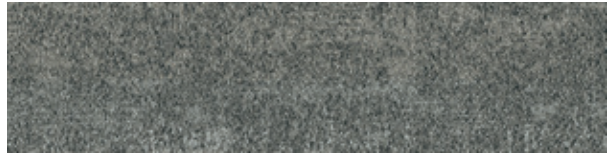
107163 SULFUR



107164 OXYGEN



107165 SELENIUM



107166 PHOSPHORUS



107167 NITROGEN



107168 CARBON

Specifications

Modular, 25cm x 1m	139350AK0G
Backing System	CQuest™GB
Yarn Manufacturer	Aquafil
Yarn System	100% Recycled Content Nylon
Color System	100% Solution Dyed
Construction	Tufted Sheared
Preservative Protection	Intersept®
Soil/Stain Protection	Protek2™
Pile Thickness	0.082 in., 2.1 mm
Pile Density	11,854
Total Recycled Content	84%
Indoor Air Quality	CRI Green Label Plus #GLP0820 CDPH 01350

Installation Methods



ASHLAR



HERRINGBONE



BROWSE IMAGES
ORDER SAMPLES



PRODUCT UP AT DAWN COLOR 107165 SELENIUM INSTALLED HERRINGBONE

Up at Dawn™ Colorline (cont'd)



107169 RHODIUM



107170 TITANIUM



107171 GOLD



107172 BERYLLIUM



107173 CHROMIUM



107174 COBALT

Specifications

Modular, 25cm x 1m	139350AK0G
Backing System	CQuest™GB
Yarn Manufacturer	Aquafil
Yarn System	100% Recycled Content Nylon
Color System	100% Solution Dyed
Construction	Tufted Sheared
Preservative Protection	Intersept®
Soil/Stain Protection	Protek2™
Pile Thickness	0.082 in., 2.1 mm
Pile Density	11,854
Total Recycled Content	84%
Indoor Air Quality	CRI Green Label Plus #GLP0820 CDPH 01350

Installation Methods



ASHLAR



HERRINGBONE

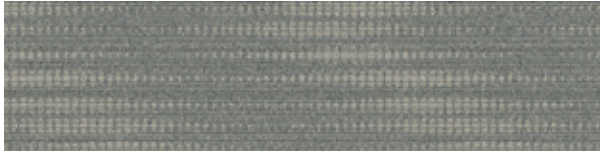


BROWSE IMAGES
ORDER SAMPLES

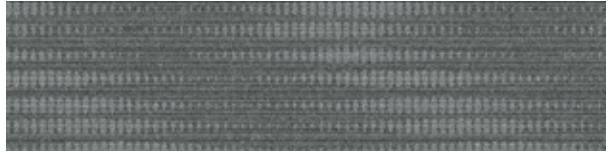


PRODUCT UP AT DAWN COLOR 107174 COBALT INSTALLED ASHLAR

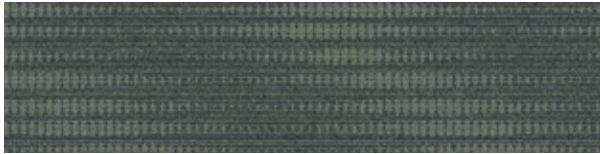
Karmic Relief™ Colorline



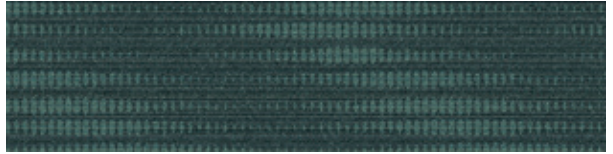
107210 SULFUR



107211 OXYGEN



107212 BERYLLIUM



107213 CHROMIUM



107214 COBALT



107215 CARBON

Specifications

Modular, 25cm x 1m	125400AK0G
Backing System	CQuest™GB
Yarn Manufacturer	Aquafil
Yarn System	100% Recycled Content Nylon
Color System	100% Solution Dyed
Construction	Tufted Textured Loop
Preservative Protection	Intersept®
Soil/Stain Protection	Protek2™
Pile Thickness	0.083 in., 2.1 mm
Pile Density	7,807
Total Recycled Content	83%
Indoor Air Quality	CRI Green Label Plus #100244 CDPH 01350

Installation Methods



ASHLAR



HERRINGBONE



BROWSE IMAGES
ORDER SAMPLES



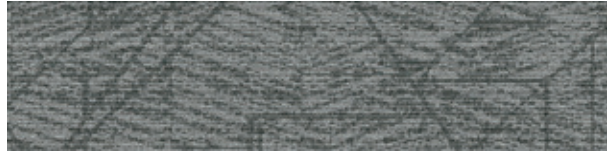
PRODUCT KARMIC RELIEF **COLORS** 107215 CARBON, 107213 CHROMIUM **INSTALLED** ASHLAR



Binary Code™ Colorline



107216 SULFUR



107217 OXYGEN



107218 BERYLLIUM



107219 CHROMIUM



107220 COBALT



107221 CARBON

Specifications

Modular, 25cm x 1m	125410AK0G
Backing System	CQuest™GB
Yarn Manufacturer	Aquafil
Yarn System	100% Recycled Content Nylon
Color System	100% Solution Dyed
Construction	Tufted Textured Loop
Preservative Protection	Intersept®
Soil/Stain Protection	Protek2™
Pile Thickness	0.079 in., 2.0 mm
Pile Density	8,658
Total Recycled Content	83%
Indoor Air Quality	CRI Green Label Plus #100244 CDPH 01350

Installation Methods



ASHLAR



HERRINGBONE



BROWSE IMAGES
ORDER SAMPLES





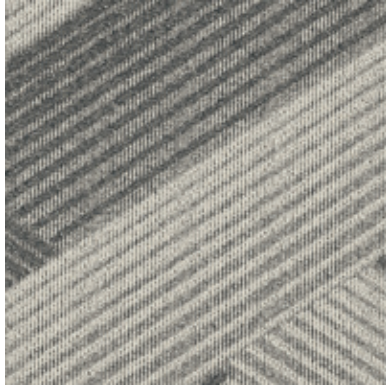
PRODUCT KARMIC RELIEF **COLORS** 107215 CARBON, 107213 CHROMIUM,
107212 BERYLLIUM, 107211 OXYGEN **INSTALLED PATTERN BY TILE**



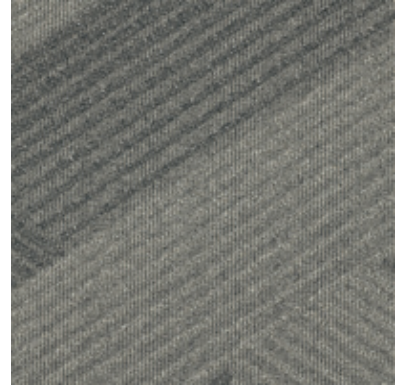
Proportional™ Colorline



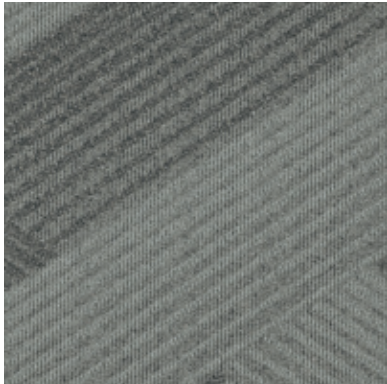
107175 SULFUR



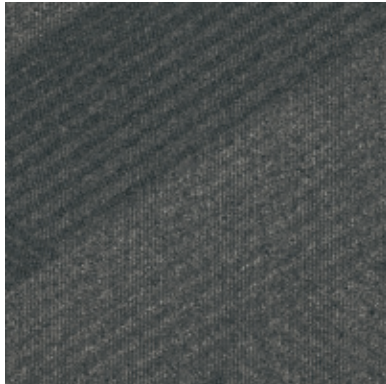
107176 ZINC



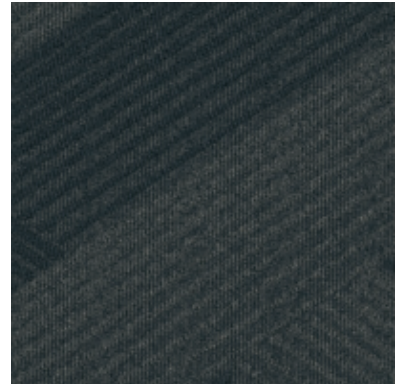
107177 PHOSPHORUS



107178 SELENIUM



107179 NITROGEN



107222 CARBON

Specifications

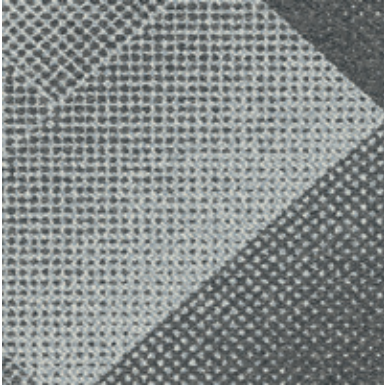
Modular, 50cm x 50cm	139360250G
Backing System	CQuest™GB
Yarn Manufacturer	Aquafil
Yarn System	100% Recycled Content Nylon
Color System	100% Solution Dyed
Construction	Tufted Pattern Loop
Preservative Protection	Intersept®
Soil/Stain Protection	Protek2™
Pile Thickness	0.146 in., 3.7 mm
Pile Density	6,164
Total Recycled Content	84%
Indoor Air Quality	CRI Green Label Plus #GLP0820 CDPH 01350

Installation Methods

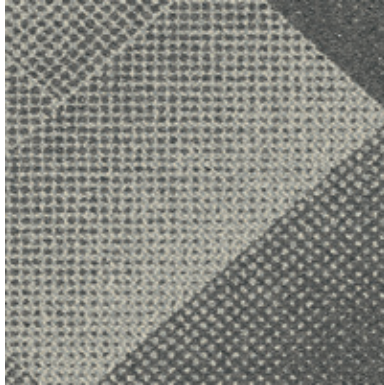


BROWSE IMAGES
ORDER SAMPLES

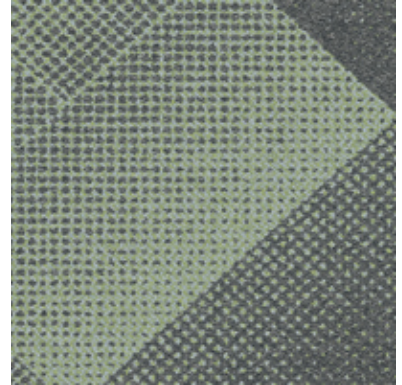
Upward Bound™ Colorline



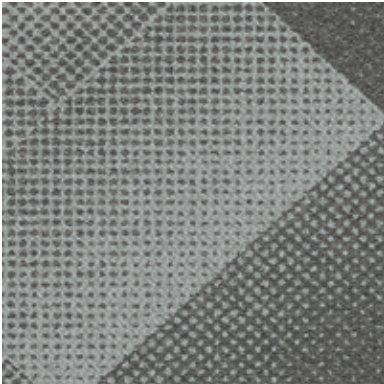
107180 XENON



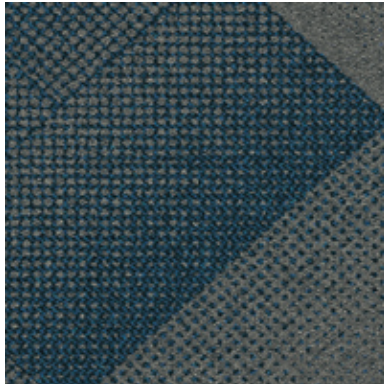
107181 OXYGEN



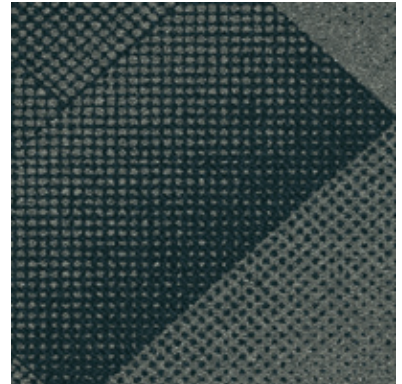
107182 BERYLLIUM



107183 TITANIUM



107184 COBALT



107185 CARBON

Specifications

Modular, 50cm x 50cm	125110250G
Backing System	CQuest™GB
Yarn Manufacturer	Aquafil
Yarn System	100% Recycled Content Nylon
Color System	100% Solution Dyed
Construction	Tufted Sheared
Preservative Protection	Intersept®
Soil/Stain Protection	Protekt2™
Pile Thickness	0.099 in., 2.5 mm
Pile Density	9,455
Total Recycled Content	84%
Indoor Air Quality	CRI Green Label Plus #GLP0820 CDPH 01350

Installation Methods



ASHLAR



BRICK



MONOLITHIC



NON DIRECTIONAL



QUARTER-TURN



BROWSE IMAGES
ORDER SAMPLES







Art: "Red Kneeling Figure" by Stephen Edwards

PRODUCT ANGLE UP **COLOR** 107207 PHOSPHORUS **INSTALLED** ASHLAR
PRODUCT BINARY CODE **COLOR** 107216 SULFUR **INSTALLED** PATTERN BY TILE

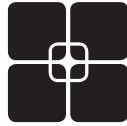
Why Our Modular Flooring?



Modular Flooring

Performance and flexibility.

Interface's standard backing systems set the industry standard for modular performance. Tiles stay on the floor with no upcurl, no tapping and no rippling effect, yet are easy to selectively replace. Our modular carpet is easier to handle than bulky roll carpet and produces an average of just 3-4% waste compared to roll carpet's average of 14%. And it installs seamlessly with our LVT, no transition strips needed.



TacTiles™

No glue installation. Our revolutionary TacTiles installation system eliminates the need for glue, adhering tiles securely together to form a floor that "floats" for greater flexibility, easier replacement and long-term performance. The result? Less mess, less waste and virtually no VOCs, not to mention an environmental footprint that is over 90% lower than that of traditional glue adhesives. TacTiles are approved for use on GlasBac™, GlasBacRE, CQuest™GB, Graphlar™ and Graphlex™.



Intersept®

Mold protection. Our proprietary preservative, Intersept, protects our modular carpet against mold growth and odor-causing bacteria—guaranteed. Intersept treated carpet, with proper maintenance, shows no mold or bacterial growth when tested per the ASTM E2471 Standard Test Method. Intersept is EPA approved for safe use in carpet, water insoluble and contains no halogens, heavy metals, phenols or formaldehyde. Intersept is standard in Interface carpet tile products backed with GlasBac, GlasBacRE, CQuestGB, ReadyBac™, and CushionBac Renew™.

Samples

Order samples at interface.com. You'll receive email order confirmations, 24/7 access to order status and more. Not near a computer? You can also request samples by calling one of the numbers below.

United States
1.877.605.1500

Canada
1.866.398.3192

Brazil
+ 5511.2196.0900

Latin America
+ 52.55.2791.6812

interface.com

Register at interface.com to:

- Browse products and order samples
- View carpet in a variety of room scenes
- Browse floor designs, change colors, view as a grid or in a room, download and share
- Check order status and inventory availability
- Sign up to get the latest information on Interface products and news

InterCircle Sample Return

Help us close the loop on the carpet sampling process. Through our InterCircle Sample Return program, sample materials stay out of the landfill and are re-used as samples until it is time to recycle them into new carpet. By reducing sample production material and diverting old materials from the landfill, we can reduce our overall environmental footprint.

Call 1.877.605.1500 (U.S.) or 1.866.398.3192 (Canada) to order a sample return bag with a prepaid return label.



ReEntry™

Recyclable. Through our ReEntry program, we reclaim all Interface carpet tile. The result? Carpet tile products with up to 85% total recycled content, including as much as 25% post-consumer content.



Sustainability Transparency

Transparency and certified sustainability leadership come standard on Interface products, including published ingredients in HPDs (Health Product Declarations) and published EPDs (Environmental Product Declarations), which are based on full life cycle assessment (LCA). And, Interface carpet products are certified to the NSF 140 Sustainable Carpet Assessment Standard. Additionally, Interface flooring and recommended adhesives are 3rd party certified for low VOC emissions in compliance with California Department of Public Health (CDPH) Standard Method v1.2–2017. Carpet products made in our US facilities are made with 99% renewable energy.



Third Party Verification

The flooring products that we sell, including carpet tile, are carbon neutral across their full product life cycle through our third party verified Carbon Neutral Floors™ program. To find out more, visit interface.com/carbonneutral



Environmental Product Declaration (EPD) –

A statement of product ingredients and environmental impacts over the entire life cycle of a product. A comprehensive life cycle assessment (LCA) is performed to ISO standards to develop an EPD, after which both the EPD and LCA must be third party verified.



NSF Certified
140/1400/1401 + 2007r
www.nsf.org

Sustainable Assessment for Carpet – The

only carpet sustainability standard in North America that evaluates the environmental impact of carpet for its entire lifecycle.



CRI Green Label Plus – An independent testing program that identifies carpet and adhesives with very low emissions of VOCs to help improve indoor air quality.



RECYCLED
Paper made from recycled material
FSC® C009723



PLEASE RECYCLE

Printed on 50% post consumer waste (PCW) fiber manufactured using wind power.

We have tried our very best to accurately represent product colors. However, due to the nature of printed materials, color of actual products may vary slightly. Please request a sample to see actual product color.

All product specifications reflect averages derived from product sample testing, are subject to normal manufacturing and testing tolerances and inherent pattern variances, and may be changed without notice. For more information about these and other important attributes of the product(s) described herein, including recycled content and product warranty information, please see interface.com/disclaimer.

interface.com

United States Headquarters

1280 West Peachtree Street NW
Atlanta, GA 30309
1.800.634.6032

Canadian Headquarters

233 Lahr Drive
Belleville, ON K8N 5S2
1.800.267.2149 ext.52128

Brazilian Headquarters

Av. Das Nações Unidas 14261
25 andar, sala 25 - 122, Brooklin Paulista
São Paulo 04578 - 000
Brasil
+ 5511.2196.0900

Latin American Headquarters

Montes Urales # 415 Piso 6
Lomas de Chapultepec
Miguel Hidalgo, CDMX
11000 Mexico
+ 52.55.2791.6812

CIM # IFS00899 09/2021



Climate change is undeniable. And reversible. Our mission is to prove it. **Join the #ClimateTakeBack and help create a climate fit for life.**