



Printed on post consumer waste (PCW) fiber manufactured using wind power.

interface.com

United States Headquarters
1280 West Peachtree Street NW
Atlanta, GA 30309
1.800.634.6032

Canadian Headquarters
233 Lahr Drive
Belleville, ON K8N 5S2
1.800.267.2149 ext. 52128

Latin American Headquarters
Montes Urales # 415 Piso 6
Lomas de Chapultepec
Miguel Hidalgo, CDMX
11000 Mexico
+ 52.55.2791.6812

CIM# IFS00922 01/2023



Climate change is undeniable. And reversible. Our mission is to prove it. Join the #ClimateTakeBack and help create a climate fit for life.



OPEN AIR

Neutrals

Interface®



Open Air™ Collection

Smart design. Unlimited opportunities.

Open Air™ is an expansive platform of affordable, hard-working carpet styles designed with open spaces in mind. Available in our best-selling neutrals including classic cools and warmer hues, Open Air products integrate effortlessly with the Interface system of solutions to elevate any space. The biggest advantage of this in-demand collection? Innovation in both design and manufacturing allows us to create the same high-quality, high-performance carpet products you expect at one low price point.

No stranger to innovation, Interface produces carpet tiles with the lowest carbon footprint in the commercial flooring industry—before any offsets. And like all Interface products, the Open Air offering is third-party verified carbon neutral across the full product life cycle through our Carbon Neutral Floors™ program.







Open Air™ 401 Color Range



106772 BLACK



106773 IRON



106774 FLANNEL



106775 CHARCOAL



106776 NATURAL



106777 NICKEL



106778 GRANITE



106779 STONE



106780 LINEN



106783 MIST



106784 NAVY



106785 EBONY



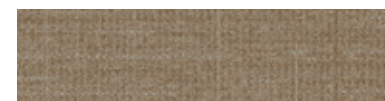
106786 OAT



106787 BROWN



106788 SHELL



106789 AMBER

Specifications

Modular, 25cm x 1m	163360
Yarn Manufacturer	Aquafil
Yarn System	100% Recycled Content Nylon
Color System	100% Solution Dyed
Construction	Tufted Textured Loop
Preservative Protection	Intersept®
Soil/Stain Protection	Protekt2®
Pile Thickness	0.076 in., 1.9 mm
Pile Density	8,526 oz/yd²
Total Recycled Content	Up to 68.37%
Indoor Air Quality	CRI Green Label Plus #GLP0820

View the full product specification on [interface.com](https://www.interface.com)

Installation Methods



ASHLAR



HERRINGBONE



**BROWSE IMAGES
ORDER SAMPLES**

Open Air™ 402 Color Range



106736 BLACK



106737 IRON



106738 FLANNEL



106739 CHARCOAL



106740 NATURAL



106741 NICKEL



106742 GRANITE



106743 STONE



106744 LINEN



106790 MIST



106791 NAVY



106792 EBONY



106793 OAT



106794 BROWN



106795 SHELL



106796 AMBER



Specifications

Modular, 25cm x 1m	163320
Yarn Manufacturer	Aquafil
Yarn System	100% Recycled Content Nylon
Color System	100% Solution Dyed
Construction	Tufted Textured Loop
Preservative Protection	Intersept®
Soil/Stain Protection	Protekt ² ®
Pile Thickness	0.084 in., 2.1 mm
Pile Density	8,143 oz./yd ³
Total Recycled Content	Up to 68.67%
Indoor Air Quality	CRI Green Label Plus #GLP0820

View the full product specification on interface.com

Installation Methods



ASHLAR



HERRINGBONE



BROWSE IMAGES
ORDER SAMPLES

PRODUCT OPEN AIR 402 COLORS 106739 CHARCOAL, 106740 NATURAL INSTALLED ASHLAR



Open Air™ 403 Color Range



106727 BLACK



106728 IRON



106729 FLANNEL



106730 CHARCOAL



106731 NATURAL



106732 NICKEL



106733 GRANITE



106734 STONE



106735 LINEN



107697 MIST



107698 NAVY



107699 EBONY



107700 OAT



107701 BROWN



107702 SHELL



107703 AMBER

Specifications **i2**

Modular, 50cm x 50cm	163310
Yarn Manufacturer	Aquafil
Yarn System	100% Recycled Content Nylon
Color System	100% Solution Dyed
Construction	Tufted Textured Loop
Preservative Protection	Intersept®
Soil/Stain Protection	Protekt ² ®
Pile Thickness	0.083 in., 2.1 mm
Pile Density	8,241 oz/yd ³
Total Recycled Content	Up to 68.67%
Indoor Air Quality	CRI Green Label Plus #GLP0820

View the full product specification on [interface.com](https://www.interface.com)

Installation Method

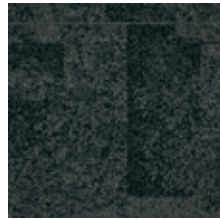


NON DIRECTIONAL



BROWSE IMAGES
ORDER SAMPLES

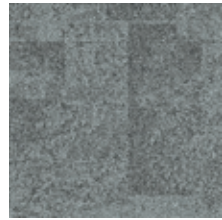
Open Air™ 404 Color Range



106745 BLACK



106746 IRON



106747 FLANNEL



106748 CHARCOAL



106749 NATURAL



106750 NICKEL



106751 GRANITE



106752 STONE



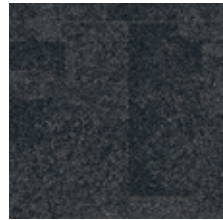
106753 LINEN



107704 MIST



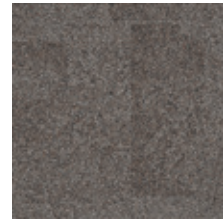
107705 NAVY



107706 EBONY



107707 OAT



107708 BROWN



107709 SHELL



107710 AMBER

Specifications **i2**

Modular, 50cm x 50cm	163330
Yarn Manufacturer	Aquafil
Yarn System	100% Recycled Content Nylon
Color System	100% Solution Dyed
Construction	Tufted Textured Loop
Preservative Protection	Intersept®
Soil/Stain Protection	Protekt2®
Pile Thickness	0.07 in., 1.8 mm
Pile Density	9,771 oz/yd³
Total Recycled Content	Up to 68.67%
Indoor Air Quality	CRI Green Label Plus #GLP0820

[View the full product specification on interface.com](#)

Installation Method



NON DIRECTIONAL



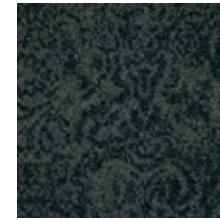
BROWSE IMAGES
ORDER SAMPLES



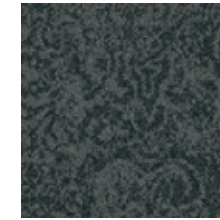
PRODUCT OPEN AIR 404 COLOR 106750 NICKEL INSTALLED NON DIRECTIONAL



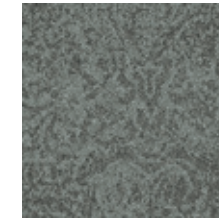
Open Air™ 405 Color Range



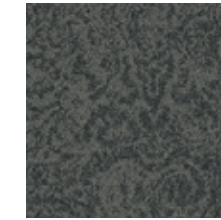
106754 BLACK



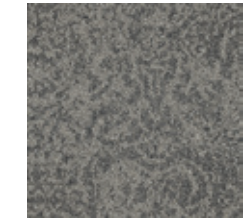
106755 IRON



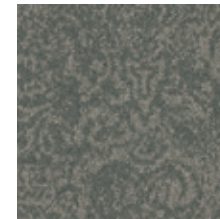
106756 FLANNEL



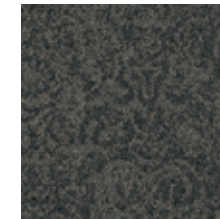
106757 CHARCOAL



106758 NATURAL



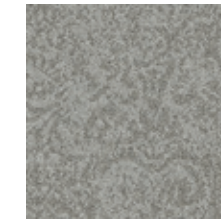
106759 NICKEL



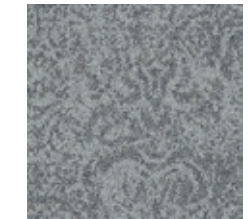
106760 GRANITE



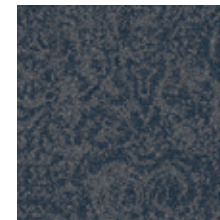
106761 STONE



106762 LINEN



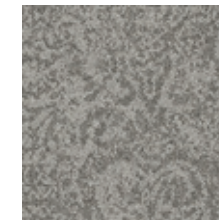
107711 MIST



107712 NAVY



107713 EBONY



107714 OAT



107715 BROWN



107716 SHELL



107717 AMBER

Specifications **i2**

Modular, 50cm x 50cm	163340
Yarn Manufacturer	Aquafil
Yarn System	100% Recycled Content Nylon
Color System	100% Solution Dyed
Construction	Tufted Textured Loop
Preservative Protection	Intersept®
Soil/Stain Protection	Protekt2®
Pile Thickness	0.079 in., 2.0 mm
Pile Density	8,203 oz/yd²
Total Recycled Content	Up to 68.37%
Indoor Air Quality	CRI Green Label Plus #GLP0820

View the full product specification on [interface.com](https://www.interface.com)

Installation Method



NON DIRECTIONAL



BROWSE IMAGES
ORDER SAMPLES

Open Air™ 407 Color Range



106939 BLACK



106940 IRON



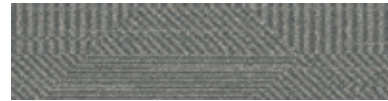
106941 FLANNEL



106942 CHARCOAL



106943 NATURAL



106944 NICKEL



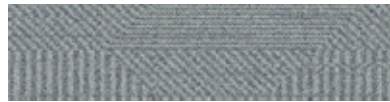
106945 GRANITE



106946 STONE



106947 LINEN



107718 MIST



107719 NAVY



107720 EBONY



107721 OAT



107722 BROWN



107723 SHELL



107724 AMBER

Specifications

Modular, 25cm x 1m	163370
Yarn Manufacturer	Aquafil
Yarn System	100% Recycled Content Nylon
Color System	100% Solution Dyed
Construction	Tufted Textured Loop
Preservative Protection	Intersept®
Soil/Stain Protection	Protekt ² ®
Pile Thickness	0.093 in., 2.4 mm
Pile Density	6,968 oz/yd ²
Total Recycled Content	Up to 68.37%
Indoor Air Quality	CRI Green Label Plus #GLP0820

View the full product specification on [interface.com](https://www.interface.com)

Installation Methods



ASHLAR



HERRINGBONE



BROWSE IMAGES
ORDER SAMPLES



PRODUCT OPEN AIR 407 **COLOR** 106939 BLACK **INSTALLED** HERRINGBONE



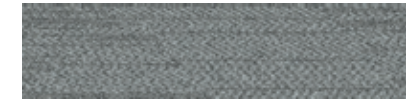
Open Air™ 408 Color Range



106948 BLACK



106949 IRON



106950 FLANNEL



106951 CHARCOAL



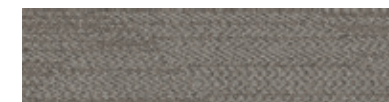
106952 NATURAL



106953 NICKEL



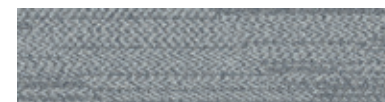
106954 GRANITE



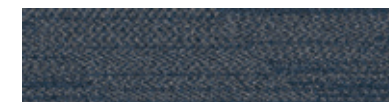
106955 STONE



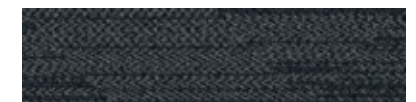
106956 LINEN



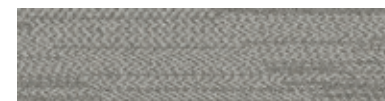
107725 MIST



107726 NAVY



107727 EBONY



107728 OAT



107729 BROWN



107730 SHELL



107731 AMBER

Specifications

Modular, 25cm x 1m	163380
Yarn Manufacturer	Aquafil
Yarn System	100% Recycled Content Nylon
Color System	100% Solution Dyed
Construction	Tufted Textured Loop
Preservative Protection	Intersept®
Soil/Stain Protection	Protek2®
Pile Thickness	0.093 in., 2.4 mm
Pile Density	6,968 oz/yd²
Total Recycled Content	Up to 68.37%
Indoor Air Quality	CRI Green Label Plus #GLP0820

View the full product specification on [interface.com](https://www.interface.com)

Installation Methods



ASHLAR



HERRINGBONE



BROWSE IMAGES
ORDER SAMPLES

Open Air™ 409 Color Range



106957 BLACK



106958 IRON



106959 FLANNEL



106960 CHARCOAL



106961 NATURAL



106962 NICKEL



106963 GRANITE



106964 STONE



106965 LINEN



107732 MIST



107733 NAVY



107734 EBONY



107735 OAT



107736 BROWN



107737 SHELL



107738 AMBER

Specifications

Modular, 25cm x 1m	163390
Yarn Manufacturer	Aquafil
Yarn System	100% Recycled Content Nylon
Color System	100% Solution Dyed
Construction	Tufted Textured Loop
Preservative Protection	Intersept®
Soil/Stain Protection	Protek12®
Pile Thickness	0.093 in., 2.4 mm
Pile Density	6,968 oz/yd ²
Total Recycled Content	Up to 68.37%
Indoor Air Quality	CRI Green Label Plus #GLP0820

View the full product specification on [interface.com](https://www.interface.com)

Installation Methods



ASHLAR



HERRINGBONE



BROWSE IMAGES
ORDER SAMPLES



PRODUCT OPEN AIR 409. COLOR 106961 NATURAL. INSTALLED ASHLAR



Open Air™ 410 Color Range



106966 BLACK



106967 IRON



106968 FLANNEL



106969 CHARCOAL



106970 NATURAL



106971 NICKEL



106972 GRANITE



106973 STONE



106974 LINEN



107739 MIST



107740 NAVY



107741 EBONY



107742 OAT



107743 BROWN



107744 SHELL



107745 AMBER

Specifications

Modular, 25cm x 1m	163400
Yarn Manufacturer	Aquafil
Yarn System	100% Recycled Content Nylon
Color System	100% Solution Dyed
Construction	Tufted Textured Loop
Preservative Protection	Intersept®
Soil/Stain Protection	Protekt2®
Pile Thickness	0.093 in., 2.4 mm
Pile Density	6,968 oz/yd ²
Total Recycled Content	Up to 68.37%
Indoor Air Quality	CRI Green Label Plus #GLP0820

View the full product specification on [interface.com](https://www.interface.com)

Installation Methods



ASHLAR



HERRINGBONE



BROWSE IMAGES
ORDER SAMPLES

Open Air™ 411 Color Range



106976 BLACK



106977 IRON



106978 FLANNEL



106979 CHARCOAL



106980 NATURAL



106981 NICKEL



106982 GRANITE



106983 STONE



106984 LINEN



107746 MIST



107747 NAVY



107748 EBONY



107749 OAT



107750 BROWN



107751 SHELL



107752 AMBER

Specifications

Modular, 25cm x 1m	163410
Yarn Manufacturer	Aquafil
Yarn System	100% Recycled Content Nylon
Color System	100% Solution Dyed
Construction	Tufted Textured Loop
Preservative Protection	Intersept®
Soil/Stain Protection	Protek12®
Pile Thickness	0.093 in., 2.4 mm
Pile Density	6,968 oz/yd ²
Total Recycled Content	Up to 68.37%
Indoor Air Quality	CRI Green Label Plus #GLP0820

View the full product specification on [interface.com](https://www.interface.com)

Installation Methods



ASHLAR



HERRINGBONE



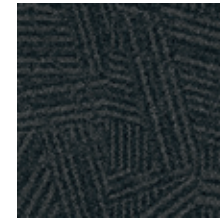
BROWSE IMAGES
ORDER SAMPLES



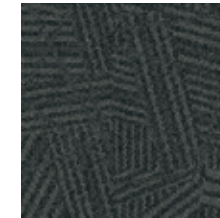
PRODUCT OPEN AIR 411 COLOR 107749 OAT INSTALLED ASHLAR
PRODUCT ON LINE™ COLOR 105267 COBALT INSTALLED ASHLAR



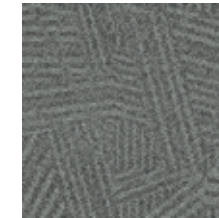
Open Air™ 412 Color Range



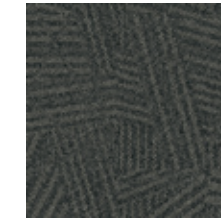
106985 BLACK



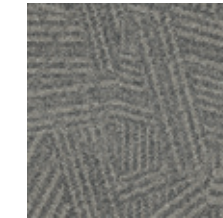
106986 IRON



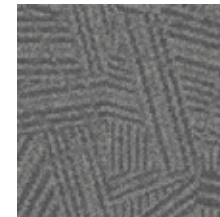
106987 FLANNEL



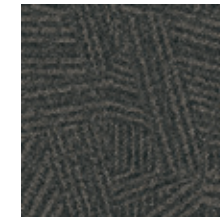
106988 CHARCOAL



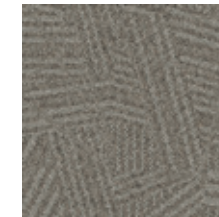
106989 NATURAL



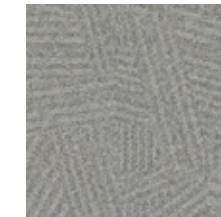
106990 NICKEL



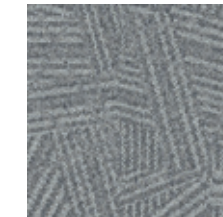
106991 GRANITE



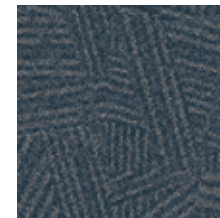
106992 STONE



106993 LINEN



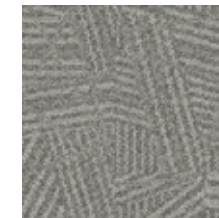
107753 MIST



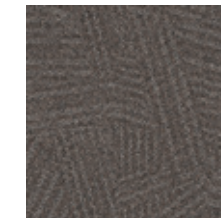
107754 NAVY



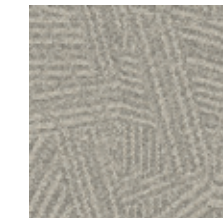
107755 EBONY



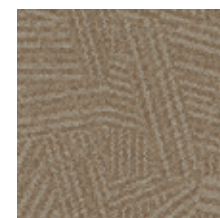
107756 OAT



107757 BROWN



107758 SHELL



107759 AMBER

Specifications

Modular, 50cm x 50cm	163420
Yarn Manufacturer	Aquafil
Yarn System	100% Recycled Content Nylon
Color System	100% Solution Dyed
Construction	Tufted Textured Loop
Preservative Protection	Intersept®
Soil/Stain Protection	Protekt ² ®
Pile Thickness	0.093 in., 2.4 mm
Pile Density	7,355 oz/yd ³
Total Recycled Content	Up to 68.67%
Indoor Air Quality	CRI Green Label Plus #GLP0820

[View the full product specification on interface.com](https://www.interface.com)

Installation Method



MONOLITHIC



BROWSE IMAGES
ORDER SAMPLES

Open Air™ 413 Color Range



106994 BLACK



106995 IRON



106996 FLANNEL



106997 CHARCOAL



106998 NATURAL



106999 NICKEL



107000 GRANITE



107001 STONE



107002 LINEN



107760 MIST



107761 NAVY



107762 EBONY



107763 OAT



107764 BROWN



107765 SHELL



107766 AMBER

Specifications

Modular, 50cm x 50cm	163430
Yarn Manufacturer	Aquafil
Yarn System	100% Recycled Content Nylon
Color System	100% Solution Dyed
Construction	Tufted Textured Loop
Preservative Protection	Intersept®
Soil/Stain Protection	Protekt2®
Pile Thickness	0.093 in., 2.4 mm
Pile Density	6,968 oz./yd²
Total Recycled Content	Up to 68.37%
Indoor Air Quality	CRI Green Label Plus #GLP0820

View the full product specification on [interface.com](https://www.interface.com)

Installation Method



MONOLITHIC



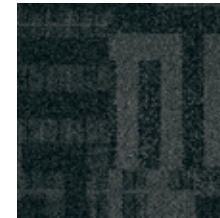
BROWSE IMAGES
ORDER SAMPLES



LVT PRODUCT LEVEL SET™ NATURAL WOODGRAINS COLOR A00207 WASHED WHEAT INSTALLED ASHLAR
CARPET PRODUCT OPEN AIR 413 COLOR 107002 LINEN INSTALLED MONOLITHIC



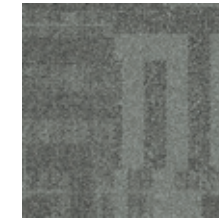
Open Air™ 414 Color Range



107003 BLACK



107004 IRON



107005 FLANNEL



107006 CHARCOAL



107007 NATURAL



107008 NICKEL



107009 GRANITE



107010 STONE



107011 LINEN



107767 MIST



107768 NAVY



107769 EBONY



107770 OAT



107771 BROWN



107772 SHELL



107773 AMBER

Specifications **i2**

Modular, 50cm x 50cm	163440
Yarn Manufacturer	Aquafil
Yarn System	100% Recycled Content Nylon
Color System	100% Solution Dyed
Construction	Tufted Textured Loop
Preservative Protection	Intersept®
Soil/Stain Protection	Protekt ² ®
Pile Thickness	0.093 in., 2.4 mm
Pile Density	6,968 oz/yd ²
Total Recycled Content	Up to 68.37%
Indoor Air Quality	CRI Green Label Plus #GLP0820

View the full product specification on [interface.com](https://www.interface.com)

Installation Method

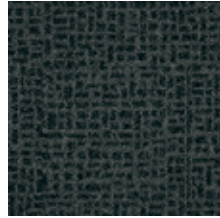


NON DIRECTIONAL

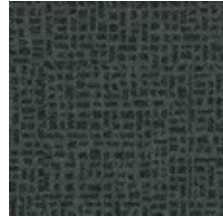


BROWSE IMAGES
ORDER SAMPLES

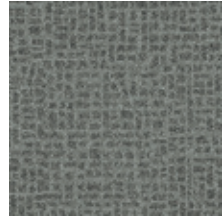
Open Air™ 415 Color Range



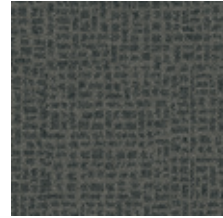
107012 BLACK



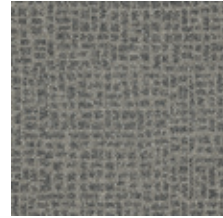
107013 IRON



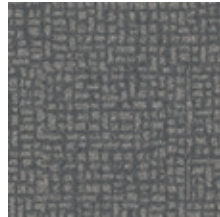
107014 FLANNEL



107015 CHARCOAL



107016 NATURAL



107017 NICKEL



107018 GRANITE



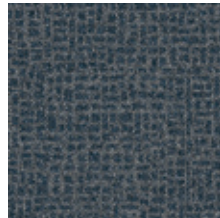
107019 STONE



107020 LINEN



107774 MIST



107775 NAVY



107776 EBONY



107777 OAT



107778 BROWN



107779 SHELL



107780 AMBER

Specifications

Modular, 50cm x 50cm	163450
Yarn Manufacturer	Aquafil
Yarn System	100% Recycled Content Nylon
Color System	100% Solution Dyed
Construction	Tufted Textured Loop
Preservative Protection	Intersept®
Soil/Stain Protection	Protekt2®
Pile Thickness	0.093 in., 2.4 mm
Pile Density	6,968 oz/yd ²
Total Recycled Content	Up to 68.37%
Indoor Air Quality	CRI Green Label Plus #GLP0820

View the full product specification on [interface.com](https://www.interface.com)

Installation Method



MONOLITHIC



BROWSE IMAGES
ORDER SAMPLES



CARPET PRODUCT OPEN AIR 415 COLOR 107777 OAT
LVT PRODUCT LEVEL SET TEXTURED STONES COLOR A00302 COOL POLISHED CEMENT INSTALLED MONOLITHIC



Open Air™ 416 Color Range



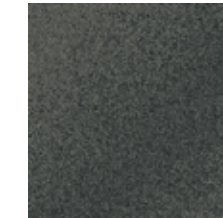
107021 BLACK



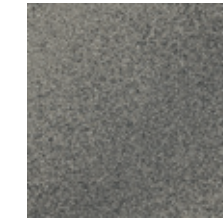
107022 IRON



107023 FLANNEL



107024 CHARCOAL



107025 NATURAL



107026 NICKEL



107027 GRANITE



107028 STONE



107029 LINEN



107781 MIST



107782 NAVY



107783 EBONY



107784 OAT



107785 BROWN



107786 SHELL



107787 AMBER

Shared elements create visual connection and pattern progression from **Open Air 416** to **Open Air 417**.

Specifications

Modular, 50cm x 50cm	147500
Yarn Manufacturer	Aquafil
Yarn System	100% Recycled Content Nylon
Color System	100% Solution Dyed
Construction	Tufted Textured Loop
Preservative Protection	Intersept®
Soil/Stain Protection	Protekt2®
Pile Thickness	0.093 in., 2.4 mm
Pile Density	7,355 oz/yd ³
Total Recycled Content	Up to 68.67%
Indoor Air Quality	CRI Green Label Plus #GLP0820

View the full product specification on [interface.com](https://www.interface.com)

Installation Method



NON DIRECTIONAL



BROWSE IMAGES
ORDER SAMPLES

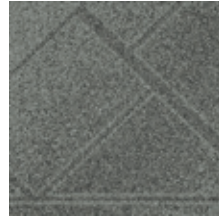
Open Air™ 417 Color Range



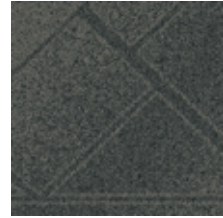
107030 BLACK



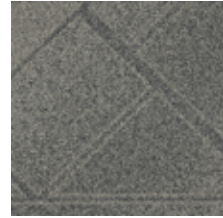
107031 IRON



107032 FLANNEL



107033 CHARCOAL



107034 NATURAL



107035 NICKEL



107036 GRANITE



107037 STONE



107038 LINEN



107788 MIST



107789 NAVY



107790 EBONY



107791 OAT



107792 BROWN



107793 SHELL



107794 AMBER

Shared elements create visual connection and pattern progression from **Open Air 416** to **Open Air 417**.

Specifications

Modular, 50cm x 50cm	147510
Yarn Manufacturer	Aquafil
Yarn System	100% Recycled Content Nylon
Color System	100% Solution Dyed
Construction	Tufted Textured Loop
Preservative Protection	Intersept®
Soil/Stain Protection	Protekt2®
Pile Thickness	0.093 in., 2.4 mm
Pile Density	6,968 oz./yd ²
Total Recycled Content	Up to 68.37%
Indoor Air Quality	CRI Green Label Plus #GLP0820

[View the full product specification on interface.com](https://www.interface.com)

Installation Method



NON DIRECTIONAL



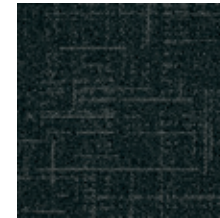
BROWSE IMAGES
ORDER SAMPLES



PRODUCT OPEN AIR 417 **COLORS** 107030 BLACK, 107032 FLANNEL **INSTALLED** NON DIRECTIONAL



Open Air™ 418 Color Range



107039 BLACK



107040 IRON



107041 FLANNEL



107042 CHARCOAL



107043 NATURAL



107044 NICKEL



107045 GRANITE



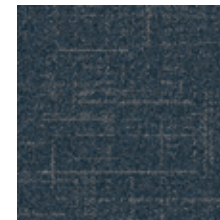
107046 STONE



107047 LINEN



107795 MIST



107796 NAVY



107797 EBONY



107798 OAT



107799 BROWN



107800 SHELL



107801 AMBER

Specifications

Modular, 50cm x 50cm	147520
Yarn Manufacturer	Aquafil
Yarn System	100% Recycled Content Nylon
Color System	100% Solution Dyed
Construction	Tufted Textured Loop
Preservative Protection	Intersept®
Soil/Stain Protection	Protekt ² ®
Pile Thickness	0.08 in., 2.10 mm
Pile Density	7,556 oz/yd ³
Total Recycled Content	Up to 68.06%
Indoor Air Quality	CRI Green Label Plus #GLP0820

View the full product specification on [interface.com](https://www.interface.com)

Installation Method



MONOLITHIC



BROWSE IMAGES
ORDER SAMPLES

Open Air™ 419 Color Range



107048 BLACK



107049 IRON



107050 FLANNEL



107051 CHARCOAL



107052 NATURAL



107053 NICKEL



107054 GRANITE



107055 STONE



107056 LINEN



107802 MIST



107803 NAVY



107804 EBONY



107805 OAT



107806 BROWN



107807 SHELL



107808 AMBER

Specifications

Modular, 50cm x 50cm	147530
Yarn Manufacturer	Aquafil
Yarn System	100% Recycled Content Nylon
Color System	100% Solution Dyed
Construction	Tufted Textured Loop
Preservative Protection	Intersept®
Soil/Stain Protection	Protek2®
Pile Thickness	0.093 in., 2.4 mm
Pile Density	6,968 oz/yd ²
Total Recycled Content	Up to 68.37%
Indoor Air Quality	CRI Green Label Plus #GLP0820

View the full product specification on [interface.com](https://www.interface.com)

Installation Method



MONOLITHIC



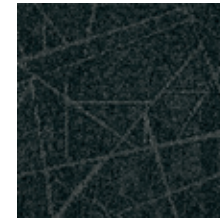
BROWSE IMAGES
ORDER SAMPLES



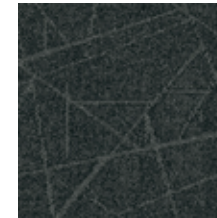
PRODUCT OPEN AIR 419 COLOR 107056 LINEN INSTALLED MONOLITHIC



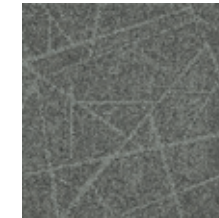
Open Air™ 420 Color Range



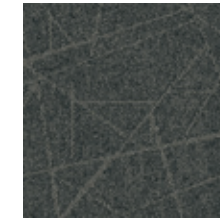
107057 BLACK



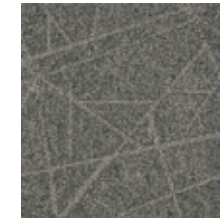
107058 IRON



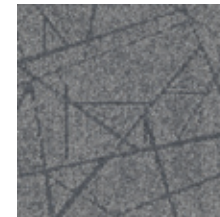
107059 FLANNEL



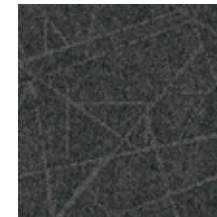
107060 CHARCOAL



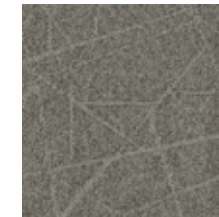
107061 NATURAL



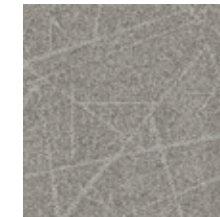
107062 NICKEL



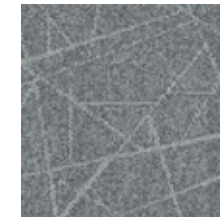
107063 GRANITE



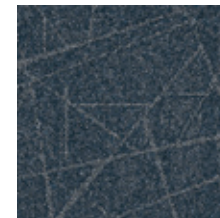
107064 STONE



107065 LINEN



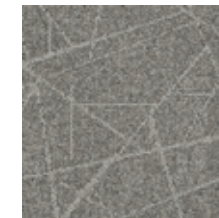
107809 MIST



107810 NAVY



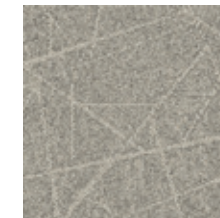
107811 EBONY



107812 OAT



107813 BROWN



107814 SHELL



107815 AMBER

Specifications

Modular, 50cm x 50cm	147540
Yarn Manufacturer	Aquafil
Yarn System	100% Recycled Content Nylon
Color System	100% Solution Dyed
Construction	Tufted Textured Loop
Preservative Protection	Intersept®
Soil/Stain Protection	Protekt ² ®
Pile Thickness	0.093 in., 2.4 mm
Pile Density	6,968 oz/yd ²
Total Recycled Content	Up to 68.37%
Indoor Air Quality	CRI Green Label Plus #GLP0820

View the full product specification on [interface.com](https://www.interface.com)

Installation Method

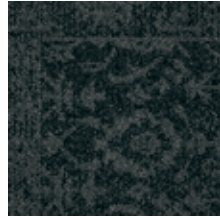


MONOLITHIC



**BROWSE IMAGES
ORDER SAMPLES**

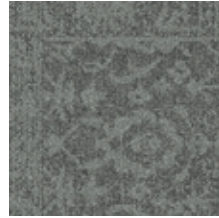
Open Air™ 421 Color Range



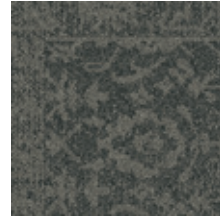
107066 BLACK



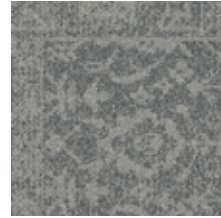
107067 IRON



107068 FLANNEL



107069 CHARCOAL



107070 NATURAL



107071 NICKEL



107072 GRANITE



107073 STONE



107074 LINEN



107816 MIST



107817 NAVY



107818 EBONY



107819 OAT



107820 BROWN



107821 SHELL



107822 AMBER

Specifications

Modular, 50cm x 50cm	147550
Yarn Manufacturer	Aquafil
Yarn System	100% Recycled Content Nylon
Color System	100% Solution Dyed
Construction	Tufted Textured Loop
Preservative Protection	Intersept®
Soil/Stain Protection	Protekt2®
Pile Thickness	0.093 in., 2.4 mm
Pile Density	6,968 oz/yd ²
Total Recycled Content	Up to 68.37%
Indoor Air Quality	CRI Green Label Plus #GLP0820

View the full product specification on interface.com

Installation Method



NON DIRECTIONAL



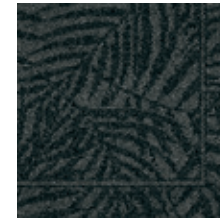
BROWSE IMAGES
ORDER SAMPLES



PRODUCT OPEN AIR 421 COLOR 107821 SHELL INSTALLED NON DIRECTIONAL
PRODUCT OPEN AIR 401 COLOR 106775 CHARCOAL INSTALLED ASHLAR



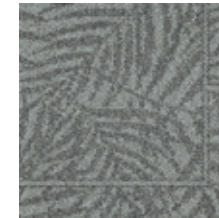
Open Air™ 422 Color Range



107075 BLACK



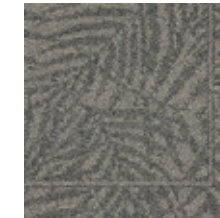
107076 IRON



107077 FLANNEL



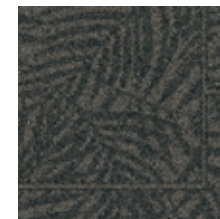
107078 CHARCOAL



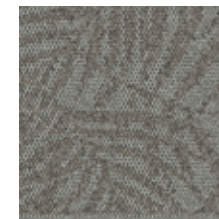
107079 NATURAL



107080 NICKEL



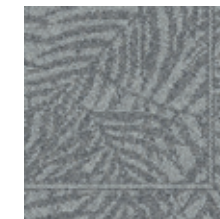
107081 GRANITE



107082 STONE



107083 LINEN



107823 MIST



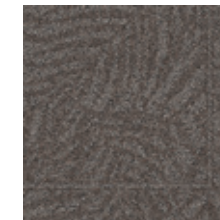
107824 NAVY



107825 EBONY



107826 OAT



107827 BROWN



107828 SHELL



107829 AMBER

Specifications

Modular, 50cm x 50cm	147560
Yarn Manufacturer	Aquafil
Yarn System	100% Recycled Content Nylon
Color System	100% Solution Dyed
Construction	Tufted Textured Loop
Preservative Protection	Intersept®
Soil/Stain Protection	Protekt2®
Pile Thickness	0.093 in., 2.4 mm
Pile Density	6,968 oz./yd ²
Total Recycled Content	Up to 68.37%
Indoor Air Quality	CRI Green Label Plus #GLP0820

Installation Method



NON DIRECTIONAL



BROWSE IMAGES
 ORDER SAMPLES

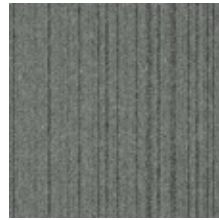
Open Air™ 423 Color Range



107084 BLACK



107085 IRON



107086 FLANNEL



107087 CHARCOAL



107088 NATURAL



107089 NICKEL



107090 GRANITE



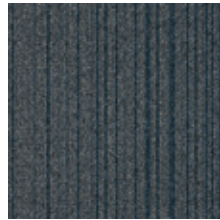
107091 STONE



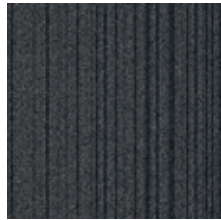
107092 LINEN



107830 MIST



107831 NAVY



107832 EBONY



107833 OAT



107834 BROWN



107835 SHELL



107836 AMBER

Specifications

Modular, 50cm x 50cm	147570
Yarn Manufacturer	Aquafil
Yarn System	100% Recycled Content Nylon
Color System	100% Solution Dyed
Construction	Tufted Textured Loop
Preservative Protection	Intersept®
Soil/Stain Protection	Protekt2®
Pile Thickness	0.093 in., 2.4 mm
Pile Density	6,968 oz/yd ²
Total Recycled Content	Up to 68.37%
Indoor Air Quality	CRI Green Label Plus #GLP0820

View the full product specification on [interface.com](https://www.interface.com)

Installation Methods



ASHLAR



BRICK



MONOLITHIC



NON DIRECTIONAL



QUARTER-TURN



BROWSE IMAGES
ORDER SAMPLES



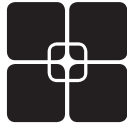
PRODUCT OPEN AIR 423 COLORS 107084 BLACK, 107831 NAVY 107086 FLANNEL INSTALLED MONOLITHIC

Why Our Modular Flooring?



i2® Modular Carpet

Minimize waste & save money. Interface's i2® styles have mergeable dye lots. That means i2 tiles from different dye lots always blend with tiles of the same color, even when individual tiles are selectively replaced years later. This minimizes the need for attic stock and saves money. And i2 styles that install non directionally generate an average of only 1.5% installation waste as compared to 3-4% for typical modular carpet and an average of 14% for traditional roll carpet.



TacTiles™

No glue installation. Our revolutionary TacTiles installation system eliminates the need for glue, adhering tiles securely together to form a floor that “floats” for greater flexibility, easier replacement and long-term performance. The result? Less mess, less waste and virtually no VOCs, not to mention an environmental footprint that is over 90% lower than that of traditional glue adhesives. TacTiles are approved for use on GlasBac™ and CQuest™GB.



Intersept®

Mold protection. Our proprietary preservative, Intersept, protects our modular carpet against mold growth and odor-causing bacteria—guaranteed. Intersept treated carpet, with proper maintenance, shows no mold or bacterial growth when tested per the ASTM E2471 Standard Test Method. Intersept is EPA approved for safe use in carpet, water insoluble and contains no halogens, heavy metals, phenols or formaldehyde. Intersept is standard in Interface carpet tile products backed with GlasBac, CQuestGB, ReadyBac™ and CushionBac Renew™.



ReEntry™

Recyclable. Through our ReEntry program we reclaim and recycle our carpet tile and Sound Choice™ LVT. ReEntry is the only 3rd party certified recycling system among North American flooring manufacturers.



Sustainability Transparency

Transparency and certified sustainability leadership come standard on Interface products. We enlist outside partners to help us evaluate the entire product lifecycle and reduce the environmental and human health impact of our flooring. And, carpet products made in our US facilities are made with 99% renewable energy.



Help Lower Your Carbon Footprint

Like all the flooring products we sell, Interface carpet tile is carbon neutral across its full product life cycle through our third party verified Carbon Neutral Floors™ program. To find out more, visit interface.com/carbonneutral



Environmental Product Declaration (EPD) –

A statement of product ingredients and environmental impacts over the entire life cycle of a product. A comprehensive life cycle assessment (LCA) is performed to ISO standards to develop an EPD, after which both the EPD and LCA must be third party verified.



Health Product Declaration (HPD) –

A transparency tool for evaluating whether a product supports Green Chemistry. As part of our work on Health and Materials, Interface continuously reduces the environmental and health impacts of our products through elimination of materials of concern.



CRI Green Label Plus – An independent testing program that identifies carpet and adhesives with very low emissions of VOCs to help improve indoor air quality.



NSF 140 Sustainable Carpet Assessment – The only carpet sustainability standard in North America that evaluates the environmental impact of carpet for its entire lifecycle.

FLOR®

FLOR by Interface offers lush textures and bold patterns that are anything but business as usual. FLOR carpet tiles are the perfect design accent for offices, conference rooms and high-profile collaborative spaces – as area rugs or wall-to-wall installations. With all the performance benefits of Interface products, including the 15-year commercial warranty, they'll get the job done for years to come.

📍 Samples

Register and order samples at interface.com. Not near a computer? You can also request samples by calling one of the numbers below.

United States 1.877.605.1500
Canada 1.866.398.3192

Brazil + 5511.2196.0900
Latin America + 52.55.2791.6812

interface.com

Do more on interface.com

- Browse products and order samples
- Save and share favorites
- See images of products in a variety of room scenes
- Browse floor designs, change colors, upload your own image, download and share
- Get full specifications, sustainability certifications and more
- Check order status and inventory availability
- Sign up to get the latest information on Interface products and news

InterCircle Sample Return

Help us close the loop on the carpet sampling process. Through our InterCircle Sample Return program, sample materials stay out of the landfill and are re-used as samples until it is time to recycle them into new carpet. By reducing sample production material and diverting old materials from the landfill, we can reduce our overall environmental footprint.

Call 1.877.605.1500 (U.S.) or 1.866.398.3192 (Canada) to order a sample return bag with a prepaid return label.

We have tried our very best to accurately represent product colors. However, due to the nature of printed materials, color of actual products may vary slightly. Please request a sample to see actual product color.

All product specifications reflect averages derived from product sample testing, are subject to normal manufacturing and testing tolerances and inherent pattern variances, and may be changed without notice. For more information about these and other important attributes of the product(s) described herein, including recycled content and product warranty information, please see interface.com/disclaimer.