



Printed on 50% post consumer waste (PCW) fiber manufactured using wind power.

We have tried our very best to accurately represent product colors. However, due to the nature of printed materials, color of actual products may vary slightly. Please request a sample to see actual product color.

interface.com

United States Headquarters

1280 West Peachtree Street NW
Atlanta, GA 30309
1.800.634.6032

Canadian Headquarters

233 Lahr Drive
Belleville, ON K8N 5S2
1.800.267.2149 ext.52128

Latin American Headquarters

Montes Urales # 415 Piso 6
Lomas de Chapultepec
Miguel Hidalgo, CDMX,
11000 Mexico
+ 52.55.2791.6812

Brazilian Headquarters

Av. Das Nações Unidas 14261
25 andar, sala 25 -122, Brooklin Paulista
São Paulo 04578 - 000
Brasil
+5511.2196.0900

CIM # IFS00898 09/2021



OPEN AIR

Transitions & Accents



Climate change is undeniable. And reversible. Our mission is to prove it. Join the #ClimateTakeBack and help create a climate fit for life.

Interface®

Open Air Transitions & Accents: Blazing New Paths

Color is a powerful design tool. It can lift and create mood, aid in navigation, define space, and much more. Our Open Air™ Transitions & Accents adds color to one of your favorite neutral shades, Nickel, in the popular Open Air 403 and Open Air 404 patterns. These styles create a subtle shift in color and texture to move you into the muted colored accents. Explore how Open Air allows you to tailor these connections and transitions to create a cohesive look that addresses each need within your space.



Open Air | 403



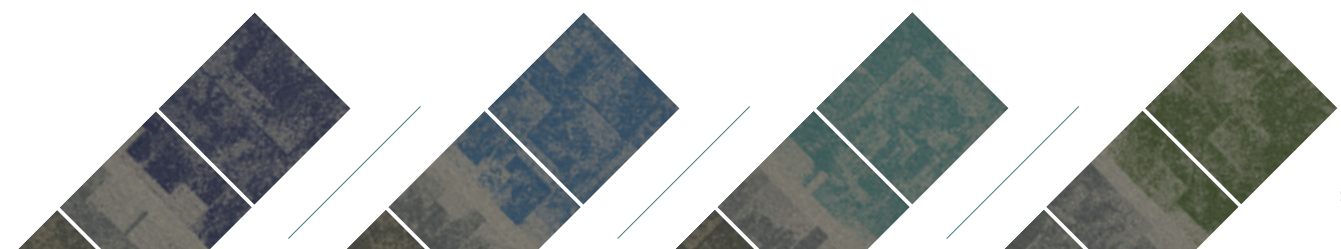
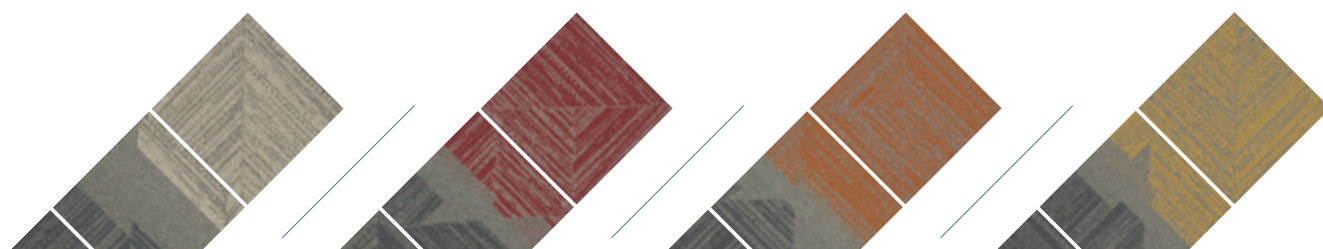
Geometric Pattern
Pages 5 - 10



Open Air | 404



Organic Pattern
Pages 13 - 18







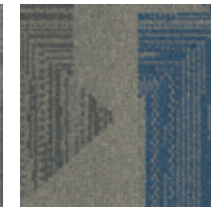
Open Air | Transitions & Accents | 403



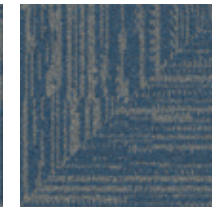
Neutral ▪ Transition ▪ Accent



Open Air
403



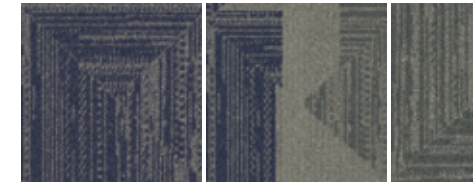
Open Air
403 Transition



Open Air
403 Accent



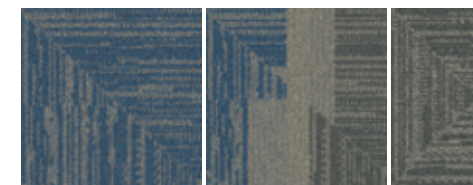
Pearl



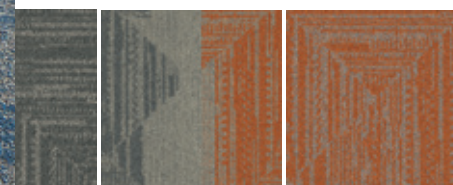
Cobalt



Rust



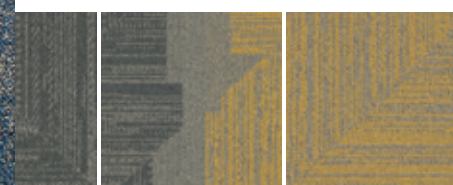
Caribbean



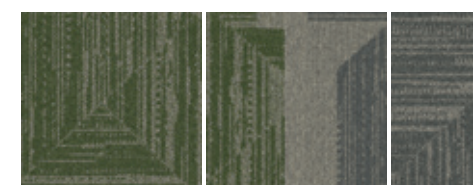
Clementine



Teal



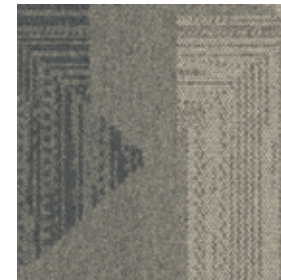
Maize



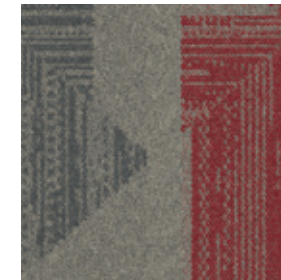
Moss



Open Air™ 403 Transition Colorline



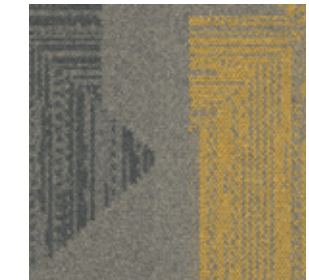
107109 NICKEL/PEARL



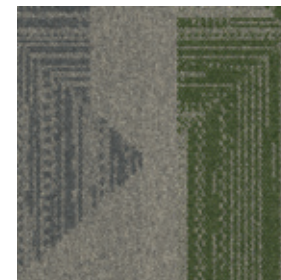
107110 NICKEL/RUST



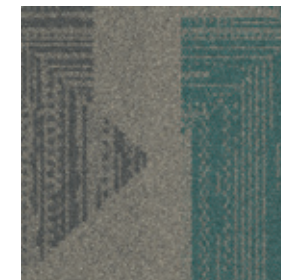
107111 NICKEL/CLEMENTINE



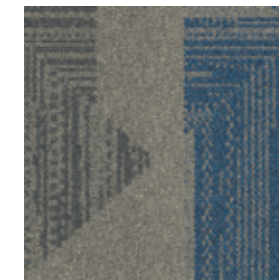
107112 NICKEL/MAIZE



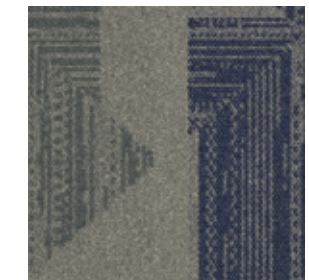
107113 NICKEL/MOSS



107114 NICKEL/TEAL



107115 NICKEL/CARIBBEAN



107116 NICKEL/COBALT

Specifications

Modular, 50cm x 50cm	131060250G
Backing System	CQuest™GB
Yarn Manufacturer	Aquafil
Yarn System	100% Recycled Content Nylon
Color System	100% Solution Dye
Construction	Tufted Textured Loop
Preservative Protection	Intersept®
Soil/Stain Protection	Protekt2™
Pile Thickness	0.098 in., 2.5 mm
Pile Density	6,980
Total Recycled Content	83%
Indoor Air Quality	CRI Green Label Plus #GLP0820 CDPH 01350

Installation Methods



NON DIRECTIONAL



BROWSE IMAGES
ORDER SAMPLES



PRODUCT OPEN AIR 403 TRANSITION COLOR 107116 NICKEL/COBALT INSTALLED PATTERN BY TILE
 PRODUCT OPEN AIR 403 ACCENT COLOR 107132 COBALT
 PRODUCT OPEN AIR 403 COLOR 106732 NICKEL INSTALLED NON DIRECTIONAL

interface.com

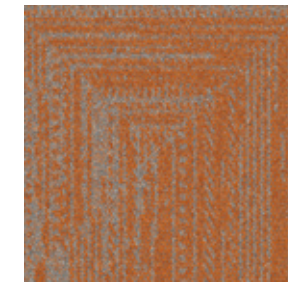
Open Air™ 403 Accent Colorline



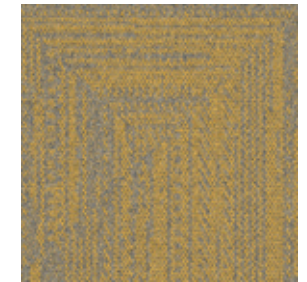
107125 PEARL



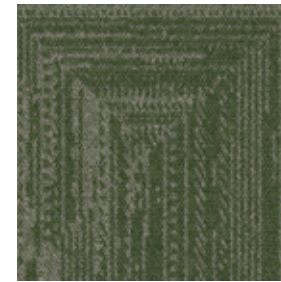
107126 RUST



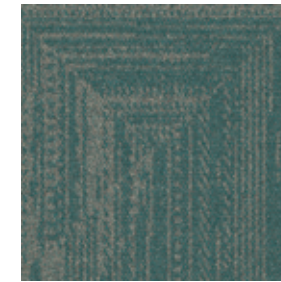
107127 CLEMENTINE



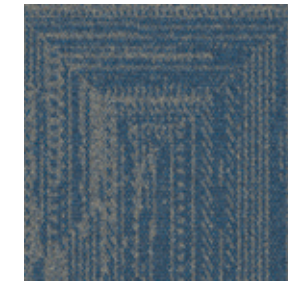
107128 MAIZE



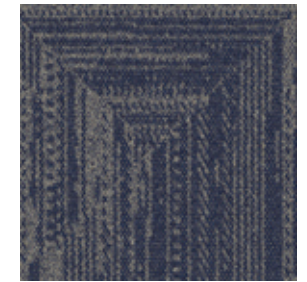
107129 MOSS



107130 TEAL



107131 CARIBBEAN



107132 COBALT

Specifications

Modular, 50cm x 50cm	131080250G
Backing System	CQuest™GB
Yarn Manufacturer	Aquafil
Yarn System	100% Recycled Content Nylon
Color System	100% Solution Dye
Construction	Tufted Textured Loop
Preservative Protection	Intersept®
Soil/Stain Protection	Protek2™
Pile Thickness	0.09 in., 2.3 mm
Pile Density	7,600
Total Recycled Content	83%
Indoor Air Quality	CRI Green Label Plus #GLP0820 CDPH 01350

Installation Methods



NON DIRECTIONAL



BROWSE IMAGES
ORDER SAMPLES





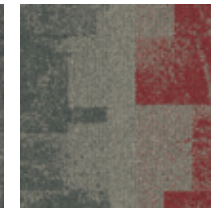
Open Air | Transitions & Accents | 404



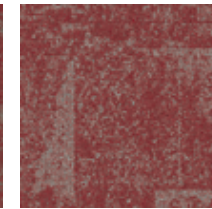
Neutral ▪ Transition ▪ Accent



Open Air
404



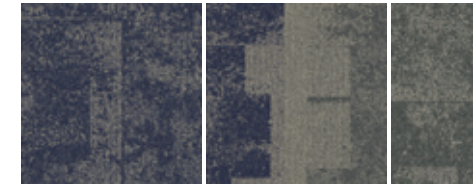
Open Air
404 Transition



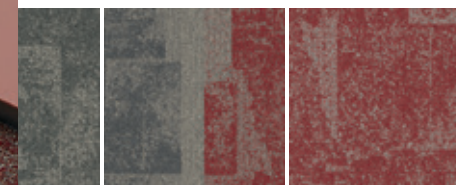
Open Air
404 Accent



Pearl



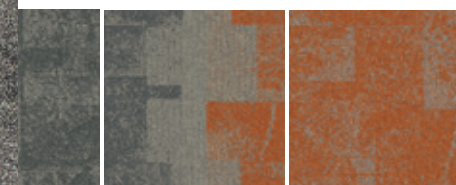
Cobalt



Rust



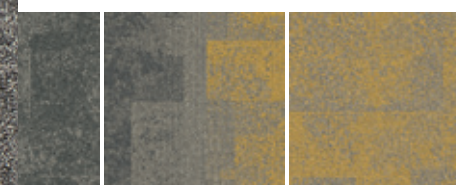
Caribbean



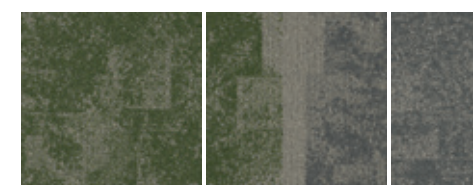
Clementine



Teal



Maize



Moss



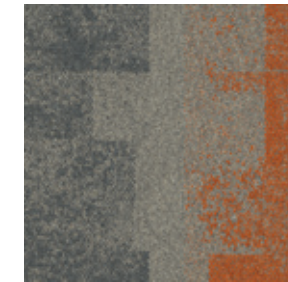
Open Air™ 404 Transition Colorline



107117 NICKEL/PEARL



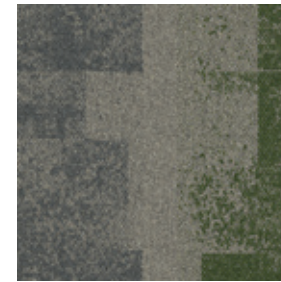
107118 NICKEL/RUST



107119 NICKEL/CLEMENTINE



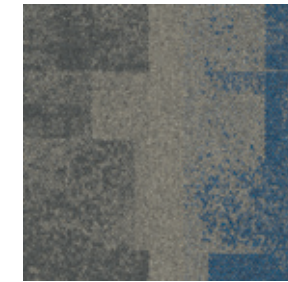
107120 NICKEL/MAIZE



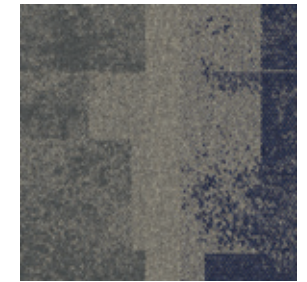
107121 NICKEL/MOSS



107122 NICKEL/TEAL



107123 NICKEL/CARIBBEAN



107124 NICKEL/COBALT

Specifications

Modular, 50cm x 50cm	131070250G
Backing System	CQuest™GB
Yarn Manufacturer	Aquafil
Yarn System	100% Recycled Content Nylon
Color System	100% Solution Dye
Construction	Tufted Textured Loop
Preservative Protection	Intersept®
Soil/Stain Protection	Protekt2™
Pile Thickness	0.098 in., 2.5 mm
Pile Density	6,980
Total Recycled Content	83%
Indoor Air Quality	CRI Green Label Plus #GLP0820 CDPH 01350

Installation Methods



NON DIRECTIONAL



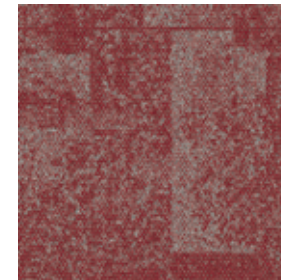
BROWSE IMAGES
ORDER SAMPLES



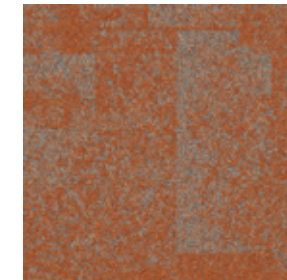
Open Air™ 404 Accent Colorline



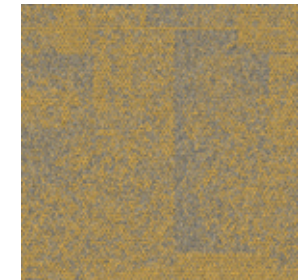
107133 PEARL



107134 RUST



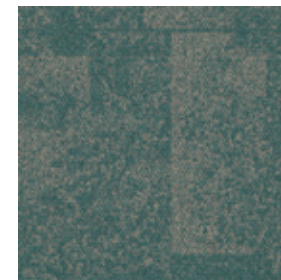
107135 CLEMENTINE



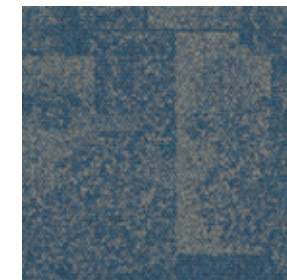
107136 MAIZE



107137 MOSS



107138 TEAL



107139 CARIBBEAN



107140 COBALT

Specifications

Modular, 50cm x 50cm	131090250G
Backing System	CQuest™GB
Yarn Manufacturer	Aquafil
Yarn System	100% Recycled Content Nylon
Color System	100% Solution Dye
Construction	Tufted Textured Loop
Preservative Protection	Intersept®
Soil/Stain Protection	Protekt2™
Pile Thickness	0.094 in., 2.4 mm
Pile Density	7,277
Total Recycled Content	83%
Indoor Air Quality	CRI Green Label Plus #GLP0820

Installation Methods



NON DIRECTIONAL



BROWSE IMAGES
ORDER SAMPLES

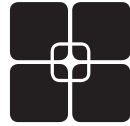


Why Our Modular Flooring?



Modular Flooring

Performance and flexibility. Interface's standard backing systems set the industry standard for modular performance. Tiles stay on the floor with no upcurl, no tapping and no rippling effect, yet are easy to selectively replace. Our modular carpet is easier to handle than bulky roll carpet and produces an average of just 3-4% waste compared to roll carpet's average of 14%. And it installs seamlessly with our LVT, no transition strips needed.



TacTiles™

No glue installation. Our revolutionary TacTiles installation system eliminates the need for glue, adhering tiles securely together to form a floor that "floats" for greater flexibility, easier replacement and long-term performance. The result? Less mess, less waste and virtually no VOCs, not to mention an environmental footprint that is over 90% lower than that of traditional glue adhesives. TacTiles are approved for use on GlasBac™, GlasBacRE, CQuest™GB, Graphlar™ and Graphlex™.



Intersept®

Mold protection. Our proprietary preservative, Intersept, protects our modular carpet against mold growth and odor-causing bacteria—guaranteed. Intersept treated carpet, with proper maintenance, shows no mold or bacterial growth when tested per the ASTM E2471 Standard Test Method. Intersept is EPA approved for safe use in carpet, water insoluble and contains no halogens, heavy metals, phenols or formaldehyde. Intersept is standard in Interface carpet tile products backed with GlasBac, GlasBacRE, CQuestGB, ReadyBac™ and CushionBac Renew™.



ReEntry™

Recyclable. Through our ReEntry program, we reclaim all Interface carpet tile. The result? Carpet tile products with up to 85% total recycled content, including as much as 25% post-consumer content.



Sustainability Transparency

Transparency and certified sustainability leadership come standard on Interface products, including published ingredients in HPDs (Health Product Declarations) and published EPDs (Environmental Product Declarations), which are based on full life cycle assessment (LCA). And, Interface carpet products are certified to the NSF 140 Sustainable Carpet Assessment Standard. Additionally, Interface flooring and recommended adhesives are 3rd party certified for low VOC emissions in compliance with California Department of Public Health (CDPH) Standard Method v1.2–2017. Carpet products made in our US facilities are made with 99% renewable energy.



Third Party Verification

The flooring products that we sell, including carpet tile, are carbon neutral across their full product life cycle through our third party verified Carbon Neutral Floors™ program. To find out more, visit interface.com/carbonneutral



Environmental Product Declaration (EPD) –

A statement of product ingredients and environmental impacts over the entire life cycle of a product. A comprehensive life cycle assessment (LCA) is performed to ISO standards to develop an EPD, after which both the EPD and LCA must be third party verified.



Sustainable Assessment for Carpet – The only carpet sustainability standard in North America that evaluates the environmental impact of carpet for its entire lifecycle.



CRI Green Label Plus – An independent testing program that identifies carpet and adhesives with very low emissions of VOCs to help improve indoor air quality.

Samples

Order samples at interface.com. You'll receive email order confirmations, 24/7 access to order status and more. Not near a computer? You can also request samples by calling one of the numbers below.

United States 1.877.605.1500
Canada 1.866.398.3192

Brazil + 5511.2196.0900
Latin America + 52.55.2791.6812

interface.com

Register at interface.com to:

- Browse products and order samples
- View carpet in a variety of room scenes
- Browse floor designs, change colors, view as a grid or in a room, download and share
- Check order status and inventory availability
- Sign up to get the latest information on Interface products and news

InterCircle Sample Return

Help us close the loop on the carpet sampling process. Through our InterCircle Sample Return program, sample materials stay out of the landfill and are re-used as samples until it is time to recycle them into new carpet. By reducing sample production material and diverting old materials from the landfill, we can reduce our overall environmental footprint.

Call 1.877.605.1500 (U.S.) or 1.866.398.3192 (Canada) to order a sample return bag with a prepaid return label.

All product specifications reflect averages derived from product sample testing, are subject to normal manufacturing and testing tolerances and inherent pattern variances, and may be changed without notice. For more information about these and other important attributes of the product(s) described herein, including recycled content and product warranty information, please see interface.com/disclaimer.



Printed on 50% post consumer waste (PCW) fiber manufactured using wind power.

We have tried our very best to accurately represent product colors. However, due to the nature of printed materials, color of actual products may vary slightly. Please request a sample to see actual product color.