



# OPEN AIR

Stria

Interface®

## Open Air™ Stria



Meet Open Air™ Stria—a solution meticulously crafted to balance sophistication with practicality. Part of our expansive Open Air platform of hard-working carpet styles, Open Air Stria layers subtle strokes of color into your favorite Open Air patterns. And with our Open Air innovations in design and manufacturing, you get the same high-quality, high-performance carpet products you expect at one low price point.

Each Stria colorway features three accent stripes skillfully integrated from the coordinating Open Ended™ color range. Together, the subtle color of Stria and the near-solid color of Open Ended expand the possibilities for your floor. Offering foundational patterns and textures, Stria & Open Ended seamlessly coordinate with other Open Air styles, Third Space™, and related lines to give you a cohesive and comprehensive solution for your space.

**PRODUCT** OPEN AIR 402 STRIA **COLOR** NATURAL  
**PRODUCT** OPEN ENDED **COLORS** COPPER & HICKORY **INSTALLED** ASHLAR

(COVER) **PRODUCT** OPEN AIR 403 STRIA **COLOR** LINEN **INSTALLED** NON DIRECTIONAL  
**PRODUCT** OPEN ENDED **COLOR** GULF **INSTALLED** ASHLAR

(OPPOSITE-CLOCKWISE) **PRODUCTS** OPEN AIR 401 STRIA, OPEN AIR 402 STRIA, OPEN AIR 403 STRIA,  
OPEN AIR 404 STRIA, OPEN AIR 211 STRIA & OPEN AIR 418 STRIA **COLOR** NATURAL



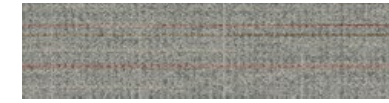




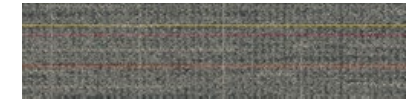
## Open Air™ 401 Stria Color Range



103223 SHELL



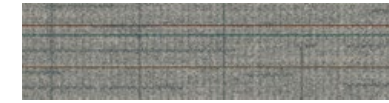
103224 NATURAL



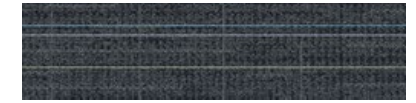
103225 GRANITE



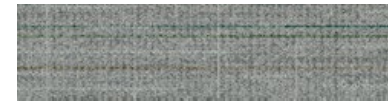
103226 OAT



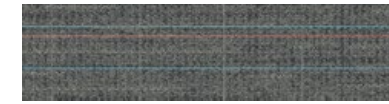
103227 NICKEL



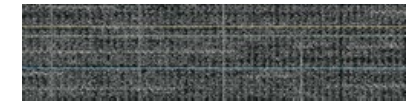
103228 IRON



103229 MIST



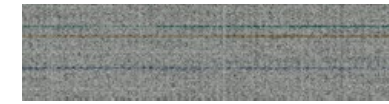
103230 CHARCOAL



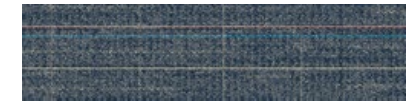
103231 BLACK



103232 LINEN



103233 FLANNEL



103234 NAVY

## Specifications

Modular, 25 cm x 1 m	13139
Yarn Manufacturer	Aquafil
Yarn System	100% Recycled Content Nylon
Dye Method	100% Solution Dyed
Construction	Tufted Textured Loop
Preservative Protection	Intersept®
Soil/Stain Protection	Protek <sup>2</sup> ™
Pile Thickness	0.08 in, 2.2 mm
Pile Density	7,624 oz/yd <sup>3</sup>
Total Recycled Content	68%
Indoor Air Quality	CRI Green Label Plus #GLP0820

*View the full product specification on [interface.com](https://www.interface.com)*

## Installation Methods



ASHLAR

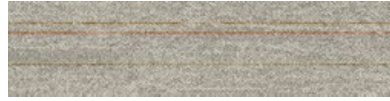


HERRINGBONE

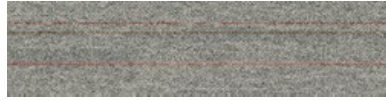


**BROWSE IMAGES**  
**ORDER SAMPLES**

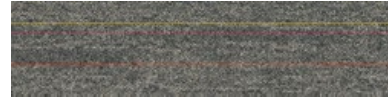
## Open Air™ 402 Stria Color Range



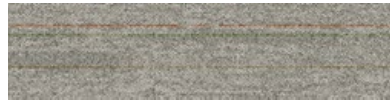
103235 SHELL



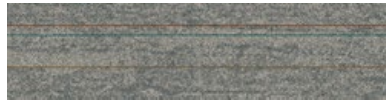
103236 NATURAL



103237 GRANITE



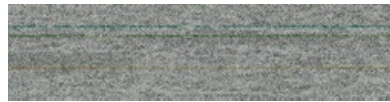
103238 OAT



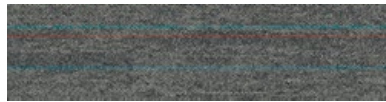
103239 NICKEL



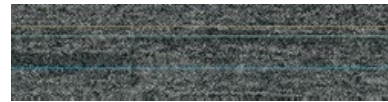
103240 IRON



103241 MIST



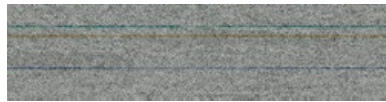
103242 CHARCOAL



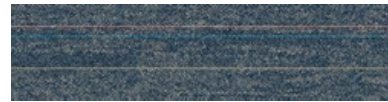
103243 BLACK



103244 LINEN



103245 FLANNEL



103246 NAVY

## Specifications

Modular, 25 cm x 1 m	13974
Yarn Manufacturer	Aquafil
Yarn System	100% Recycled Content Nylon
Dye Method	100% Solution Dyed
Construction	Tufted Textured Loop
Preservative Protection	Intersept®
Soil/Stain Protection	Protek <sup>2</sup> ™
Pile Thickness	0.09 in, 2.2 mm
Pile Density	7,773 oz/yd <sup>3</sup>
Total Recycled Content	69%
Indoor Air Quality	CRI Green Label Plus #GLP0820

*View the full product specification on [interface.com](https://www.interface.com)*

## Installation Methods



ASHLAR



HERRINGBONE



**BROWSE IMAGES**  
**ORDER SAMPLES**



PRODUCT OPEN AIR 402 STRIA COLOR OAT INSTALLED ASHLAR



## Open Air™ 403 Stria Color Range



103259 SHELL



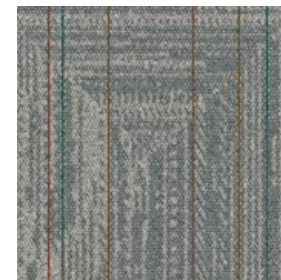
103260 NATURAL



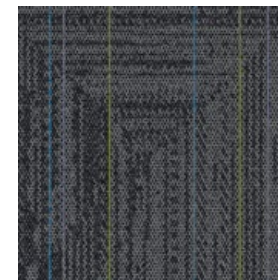
103261 GRANITE



103262 OAT



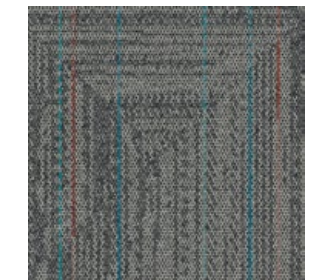
103263 NICKEL



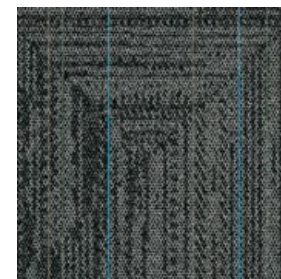
103264 IRON



103265 MIST



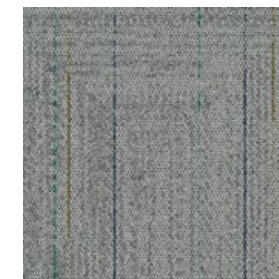
103266 CHARCOAL



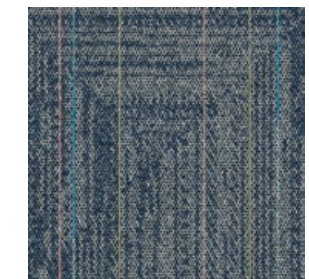
103267 BLACK



103268 LINEN



103269 FLANNEL



103270 NAVY

## Specifications **i2**

Modular, 50 cm x 50 cm	12383
Yarn Manufacturer	Aquafil
Yarn System	100% Recycled Content Nylon
Dye Method	100% Solution Dyed
Construction	Tufted Textured Loop
Preservative Protection	Intersept®
Soil/Stain Protection	Protek <sup>2</sup> ™
Pile Thickness	0.08 in, 2.1 mm
Pile Density	8,143 oz/yd <sup>3</sup>
Total Recycled Content	69%
Indoor Air Quality	CRI Green Label Plus #GLP0820

View the full product specification on [interface.com](https://www.interface.com)

## Installation Methods



NON DIRECTIONAL



QUARTER-TURN

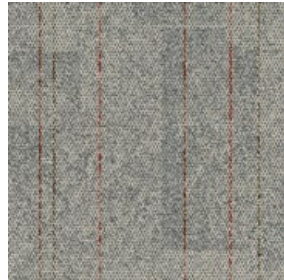


**BROWSE IMAGES**  
**ORDER SAMPLES**

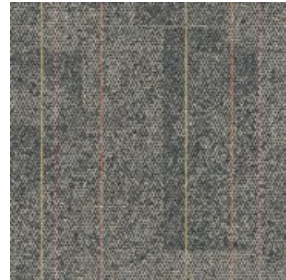
## Open Air™ 404 Stria Color Range



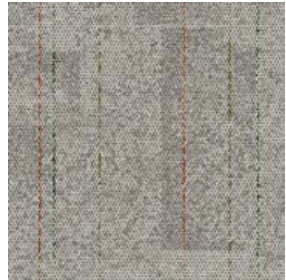
103271 SHELL



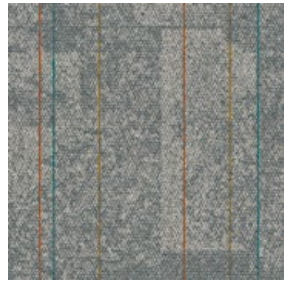
103272 NATURAL



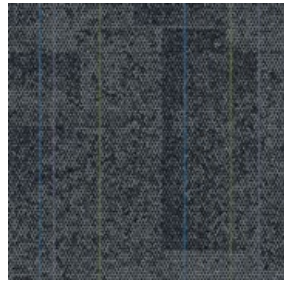
103273 GRANITE



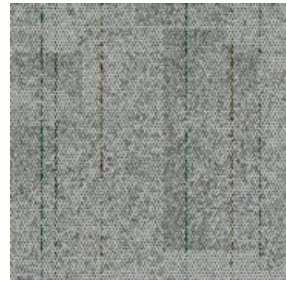
103274 OAT



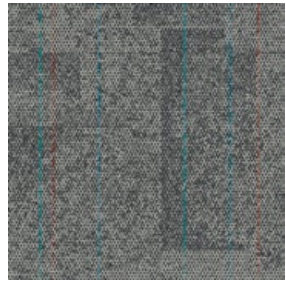
103275 NICKEL



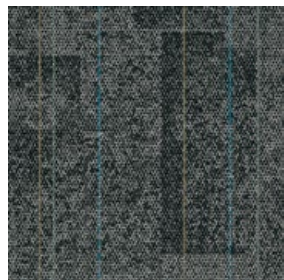
103276 IRON



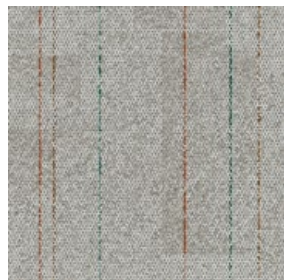
103277 MIST



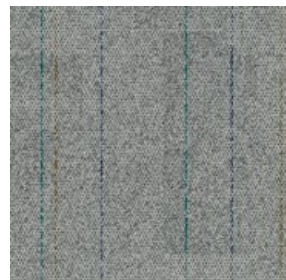
103278 CHARCOAL



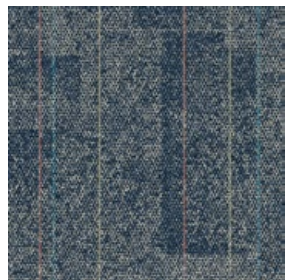
103279 BLACK



103280 LINEN



103281 FLANNEL



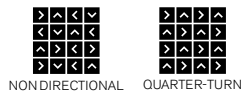
103282 NAVY

## Specifications **i2**

Modular, 50 cm x 50 cm	12384
Yarn Manufacturer	Aquafil
Yarn System	100% Recycled Content Nylon
Dye Method	100% Solution Dyed
Construction	Tufted Textured Loop
Preservative Protection	Intersept®
Soil/Stain Protection	Protek2™
Pile Thickness	0.08 in, 2.7 mm
Pile Density	8,658 oz/yd <sup>3</sup>
Total Recycled Content	69%
Indoor Air Quality	CRI Green Label Plus #GLP0820

View the full product specification on [interface.com](https://www.interface.com)

## Installation Methods



NONDIRECTIONAL QUARTER-TURN



**BROWSE IMAGES**  
**ORDER SAMPLES**



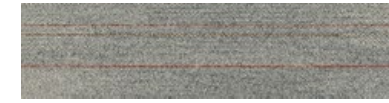
PRODUCT OPEN AIR 404 STRIA COLOR IRON INSTALLED NON DIRECTIONAL



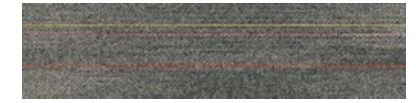
## Open Air™ 410 Stria Color Range



103247 SHELL



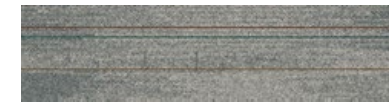
103248 NATURAL



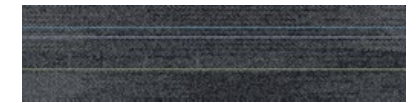
103249 GRANITE



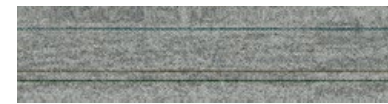
103250 OAT



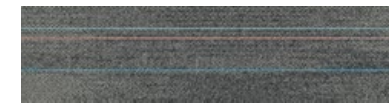
103251 NICKEL



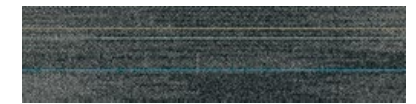
103252 IRON



103253 MIST



103254 CHARCOAL



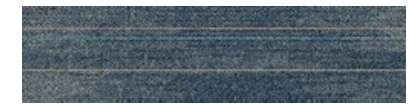
103255 BLACK



103256 LINEN



103257 FLANNEL



103258 NAVY

## Specifications

Modular, 25 cm x 1 m	13975
Yarn Manufacturer	Aquafil
Yarn System	100% Recycled Content Nylon
Dye Method	100% Solution Dyed
Construction	Tufted Textured Loop
Preservative Protection	Intersept®
Soil/Stain Protection	Protekt <sup>2</sup> ™
Pile Thickness	0.09 in, 2.4 mm
Pile Density	6,894 oz/yd <sup>3</sup>
Total Recycled Content	68%
Indoor Air Quality	CRI Green Label Plus #GLP0820

## Installation Methods



ASHLAR

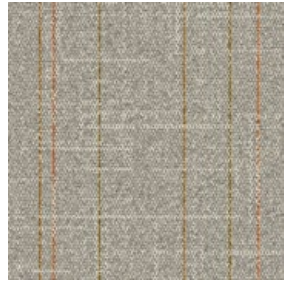


HERRINGBONE

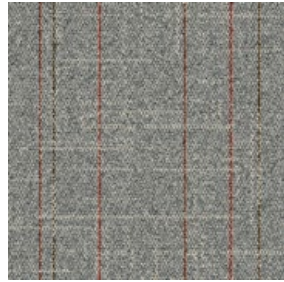




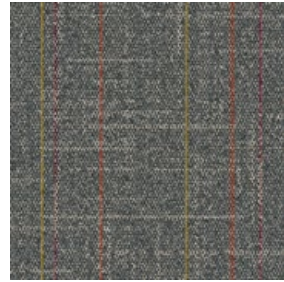
## Open Air™ 418 Stria Color Range



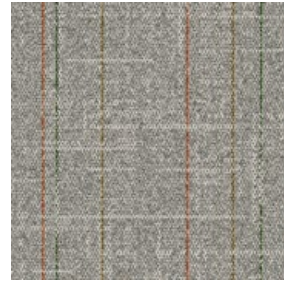
103283 SHELL



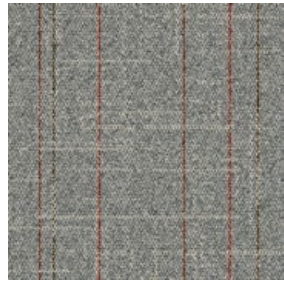
103284 NATURAL



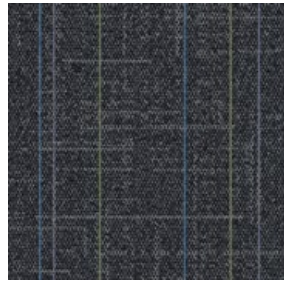
103285 GRANITE



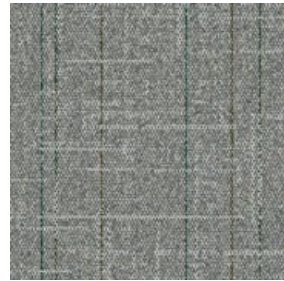
103286 OAT



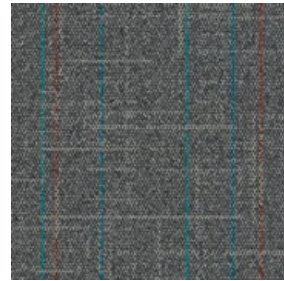
103287 NICKEL



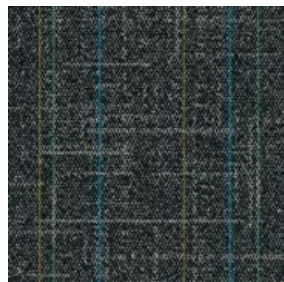
103288 IRON



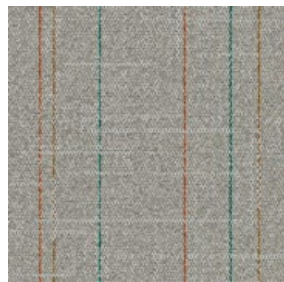
103289 MIST



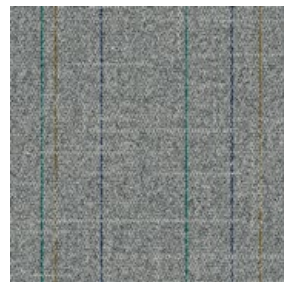
103290 CHARCOAL



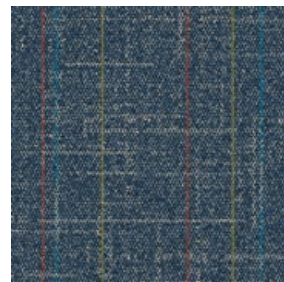
103291 BLACK



103292 LINEN



103293 FLANNEL



103294 NAVY

## Specifications

Modular, 50 cm x 50 cm	12385
Yarn Manufacturer	Aquafil
Yarn System	100% Recycled Content Nylon
Dye Method	100% Solution Dyed
Construction	Tufted Textured Loop
Preservative Protection	Intersept®
Soil/Stain Protection	Protek <sup>2</sup> ™
Pile Thickness	0.08 in, 2.1 mm
Pile Density	7,463 oz/yd <sup>3</sup>
Total Recycled Content	68%
Indoor Air Quality	CRI Green Label Plus #GLP0820

*View the full product specification on [interface.com](http://interface.com)*

## Installation Methods



MONOLITHIC



QUARTER-TURN



**BROWSE IMAGES**  
**ORDER SAMPLES**



**PRODUCT OPEN AIR 418 STRIA COLOR NATURAL INSTALLED MONOLITHIC**



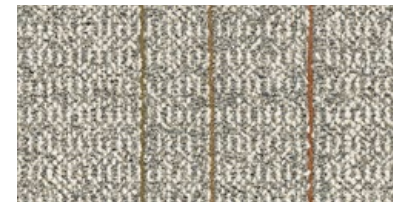
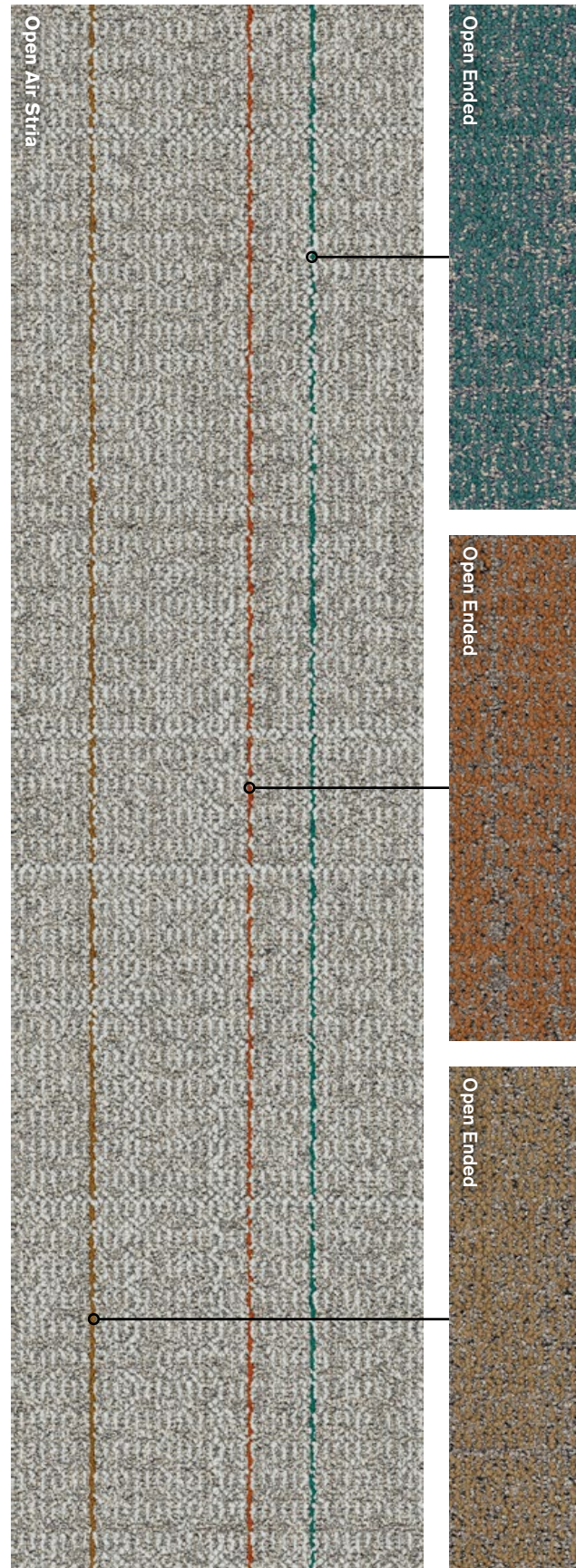
# Open Air Stria & Open Ended

Expand your design possibilities with these thoughtful companions.

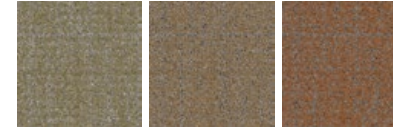
Grounded in complementary textures, you can pair any Stria style with Open Ended to emphasize wayfinding, define spaces, or simply add a colorful pop to an otherwise understated floor.

Each colorway in Open Air Stria incorporates 3 subtle accent stripes that match an Open Ended color, giving you multiple options to coordinate with other finishes in your space.

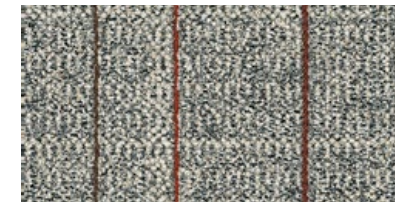
Together, Open Air Stria & Open Ended offer a flooring solution that understands your design needs and delivers a nuanced approach to style and performance.



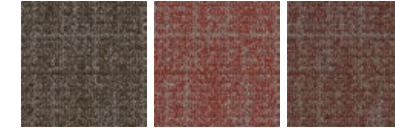
Open Air 401 Stria Shell



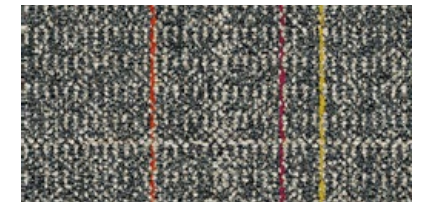
Open Ended Willow, Curry, Canyon



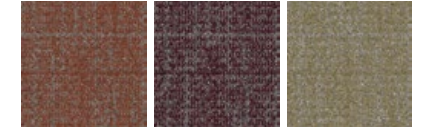
Open Air 401 Stria Natural



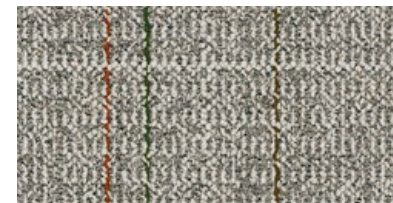
Open Ended Hickory, Cayenne, Copper



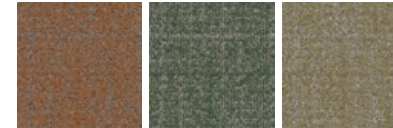
Open Air 401 Stria Granite



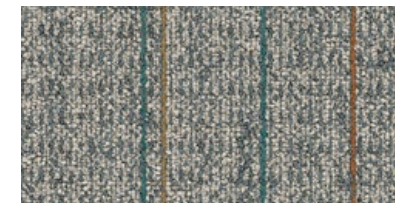
Open Ended Brick, Bordeaux, Willow



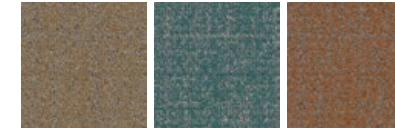
Open Air 401 Stria Oat



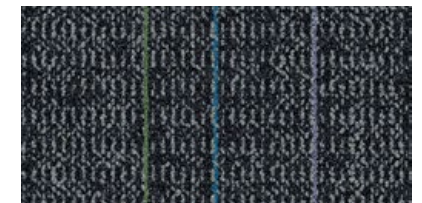
Open Ended Canyon, Spruce, Willow



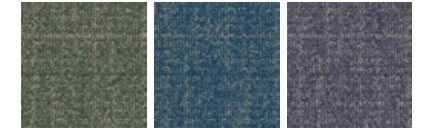
Open Air 401 Stria Nickel



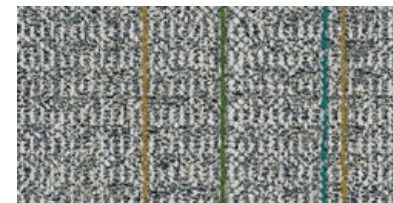
Open Ended Curry, Gulf, Canyon



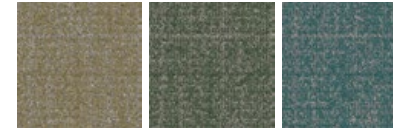
Open Air 401 Stria Iron



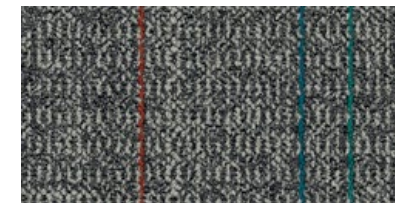
Open Ended Spruce, Lapis, Amethyst



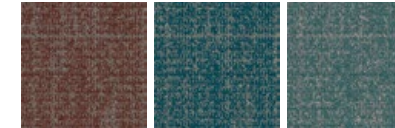
Open Air 401 Stria Mist



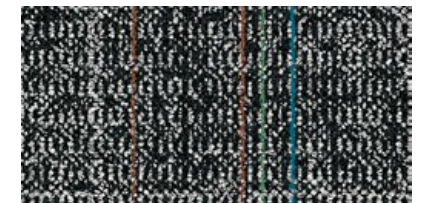
Open Ended Willow, Spruce, Gulf



Open Air 401 Stria Charcoal



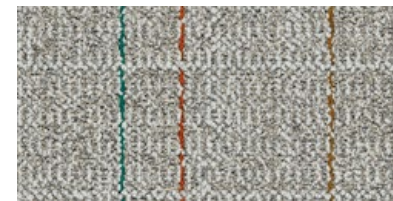
Open Ended Copper, Turquoise, Gulf



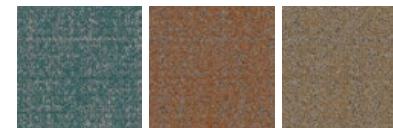
Open Air 401 Stria Black



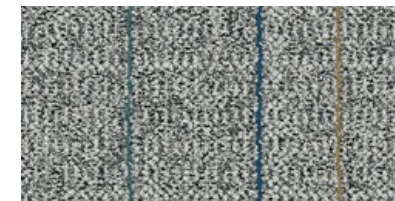
Open Ended Hickory, Pine, Turquoise



Open Air 401 Stria Linen



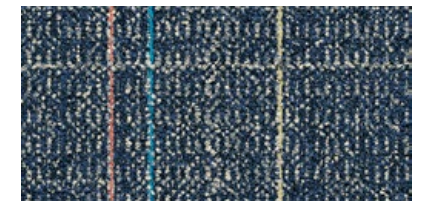
Open Ended Gulf, Canyon, Curry



Open Air 401 Stria Flannel



Open Ended Gulf, Indigo, Willow



Open Air 401 Stria Navy



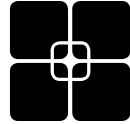
Open Ended Copper, Turquoise, Olive

## Why Our Modular Flooring?



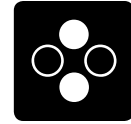
### i2® Modular Carpet

*Minimize waste & save money.* Interface's i2® styles have mergeable dye lots. That means i2 tiles from different dye lots always blend with tiles of the same color, even when individual tiles are selectively replaced years later. This minimizes the need for attic stock and saves money. And i2 styles that install non directionally generate an average of only 1.5% installation waste as compared to 3-4% for typical modular carpet and an average of 14% for traditional roll carpet.



### TacTiles™

*No glue installation.* Our revolutionary TacTiles installation system eliminates the need for glue, adhering tiles securely together to form a floor that “floats” for greater flexibility, easier replacement and long-term performance. The result? Less mess, less waste and virtually no VOCs, not to mention an environmental footprint that is over 90% lower than that of traditional glue adhesives. TacTiles are approved for use on GlasBac™, CQuest™GB, CQuest™Bio and CQuest™BioX.



### Intersept®

*Mold protection.* Our proprietary preservative, Intersept, protects our modular carpet against mold growth and odor-causing bacteria—guaranteed. Intersept treated carpet, with proper maintenance, shows no mold or bacterial growth when tested per the ASTM E2471 Standard Test Method. Intersept is EPA approved for safe use in carpet, water insoluble and contains no halogens, heavy metals, phenols or formaldehyde. Intersept is standard in Interface carpet tile products backed with GlasBac, CQuestGB, ReadyBac™ and CushionBac Renew™.



### Environmental Product Declaration (EPD)

A statement of product ingredients and environmental impacts over the entire life cycle of a product. A comprehensive life cycle assessment (LCA) is performed to ISO standards to develop an EPD, after which both the EPD and LCA must be third party verified.



### Health Product Declaration (HPD)

A transparency tool for evaluating whether a product supports Green Chemistry. As part of our work on Health and Materials, Interface continuously reduces the environmental and health impacts of our products through elimination of materials of concern.



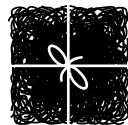
### CRI Green Label Plus

An independent testing program that identifies carpet and adhesives with very low emissions of VOCs to help improve indoor air quality.



### NSF 140 Sustainable Carpet Assessment

The only carpet sustainability standard in North America that evaluates the environmental impact of carpet for its entire life cycle.



### ReEntry™

*Recyclable.* Through our ReEntry program we reclaim and recycle our carpet tile and Sound Choice™ LVT. ReEntry is the only third party certified recycling system among North American flooring manufacturers.



### Sustainability Transparency

Transparency and certified sustainability leadership come standard on Interface products. We enlist outside partners to help us evaluate the entire product life cycle and reduce the environmental and human health impact of our flooring. And, carpet products made in our US facilities are made with 99% renewable energy.

### 📍 Samples

Register and order samples at [interface.com](https://www.interface.com). Not near a computer? You can also request samples by calling one of the numbers below.

United States  
1.877.605.1500

Canada  
1.866.398.3192

### interface.com

- Do more on [interface.com](https://www.interface.com)
- Browse products and order samples
- Save and share favorites
- See images of products in a variety of room scenes
- Browse floor designs, change colors, upload your own image, download and share
- Get full specifications, sustainability certifications and more
- Check order status and inventory availability
- Sign up to get the latest information on Interface products and news

### InterCircle Sample Return

Help us close the loop on the carpet sampling process. Through our InterCircle Sample Return program, sample materials stay out of the landfill and are re-used as samples until it is time to recycle them into new carpet. By reducing sample production material and diverting old materials from the landfill, we can reduce our overall environmental footprint.

Call 1.877.605.1500 (U.S.) or 1.866.398.3192 (Canada) to order a sample return bag with a prepaid return label.

We have tried our very best to accurately represent product colors. However, due to the nature of printed materials, color of actual products may vary slightly. Please request a sample to see actual product color.

All product specifications reflect averages derived from product sample testing, are subject to normal manufacturing and testing tolerances and inherent pattern variances, and may be changed without notice. For more information about these and other important attributes of the product(s) described herein, including recycled content and product warranty information, please see [interface.com/disclaimer](https://www.interface.com/disclaimer).



Printed on 50% post consumer waste (PCW) fiber manufactured using wind power.

**interface.com**

**United States Headquarters**

1280 West Peachtree Street NW  
Atlanta, GA 30309  
1.800.634.6032

**Canadian Headquarters**

233 Lahr Drive  
Belleville, ON K8N 5S2  
1.800.267.2149 ext. 52128

CIM# IFS00938 05/2024



Climate change is undeniable. And reversible. Our mission is to prove it.  
**Join the #ClimateTakeBack and help create a climate fit for life.**