

Off Line™

Interface®

Off Line™

---

A good departure from routine thinking is a willingness to explore the edges. When we blur the lines between two things, we no longer see each as it was—we reposition both.

On its own Off Line can present a staccato, banded effect with interesting variations. Playing with the bold solids from On Line™, Off Line veers in a new direction by creating transitions between neutrals and brights, hard and soft lines. An installation that blends On Line and Off Line together alters our impression of the scale and repeat of both styles, toying with the length of connectivity and creating an entirely new composition. Sometimes, the best course is to take it Off Line.







**Product** Off Line **Colour** Pepper/Cloud **Installed** Pattern by Tile







Product Off Line Colour Pewter/Cloud Installed Herringbone

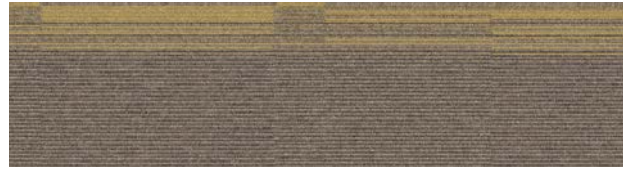


# Off Line™ Colourline

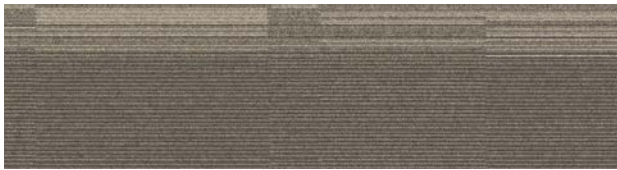
---



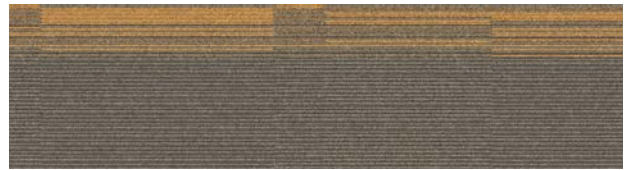
7559-002-000 Mushroom/Biscuit



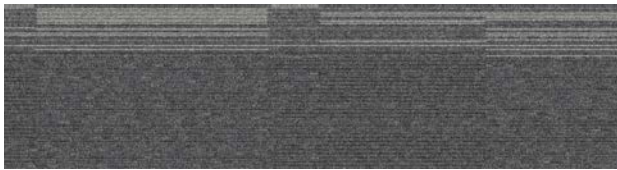
7559-003-000 Mushroom/Mustard



7559-004-000 Sage/Biscuit



7559-005-000 Sage/Canary



7559-006-000 Pewter/Cloud



7559-007-000 Pewter/Mandarin



7559-008-000 Pepper/Cloud



7559-009-000 Pepper/Lime

# On Line™ Colourline

---



7335-002-000 Mushroom



7335-004-000 Biscuit



7335-006-000 Pewter



7335-012-000 Lime



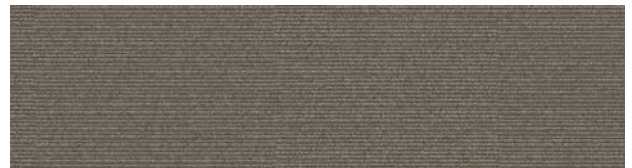
7335-015-000 Canary



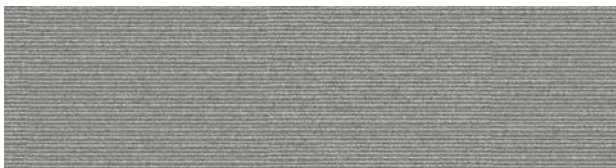
7335-016-000 Mandarin



7335-019-000 Pepper



7335-020-000 Sage



7335-021-000 Cloud

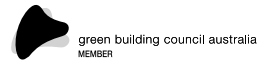
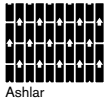


7335-024-000 Mustard

# Specifications

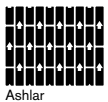
## Off Line™

Style Code	7559 Pattern 000
Product Definition	Tufted Textured Loop
Yarn/Fibre	100% Non-virgin Type 6 Nylon
Colour System	100% Solution Dyed
Machine Gauge	1/12
Pile Thickness	3.0mm +/- 0.5mm
Total Thickness	6.5mm +/- 0.5mm
Tile Size	25cm x 100cm
Area of Use	Commercial – Heavy Duty
Lifetime Antimicrobial	Intersept®
Soil/Stain Protection	Protekt2®
Total Recycled Content	GlasBac® 65% to 70% recycled content GlasBac®RE 80% to 85% recycled content
Installation Methods	Ashlar, Herringbone



## On Line™

Style Code	7335 Pattern 000
Product Definition	Tufted Textured Loop
Yarn/Fibre	100% Non-virgin Type 6 Nylon
Colour System	100% Solution Dyed
Machine Gauge	1/12
Pile Thickness	3.0mm +/- 0.5mm
Total Thickness	6.5mm +/- 0.5mm
Tile Size	25cm x 100cm
Area of Use	Commercial – Heavy Duty
Lifetime Antimicrobial	Intersept®
Soil/Stain Protection	Protekt2®
Total Recycled Content	GlasBac® 65% to 70% recycled content GlasBac®RE 80% to 85% recycled content
Installation Methods	Ashlar, Herringbone



**CoolCarpet™**  
**Intersept®**

Production specifications are subject to normal manufacturing tolerances and may be changed without notice. Slight variation in colour among different production lots are normal and should be considered in the overall installation plan. Products covered by manufacturer's written warranty only. All other warranties, including without limitation any implied warranties of merchantability or fitness for particular purpose, are hereby disclaimed. Contact your representative for written warranty information. Recycled content calculations are based on historical averages by total weight of the product for backings. Yarn/Fibre recycled content calculation excludes backing. We update our recycled content information and other environmental data regularly to reflect changes and advancements in our technology.

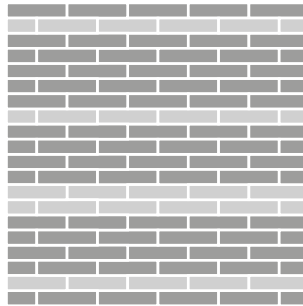
\*Cool Carpet is not a standard option in Australia and New Zealand.

**Design Ideas** Below are floor layouts showing how to create the design ideas shared in several of the images featured in this brochure.

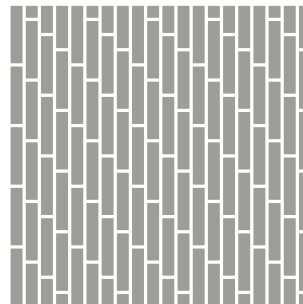
---

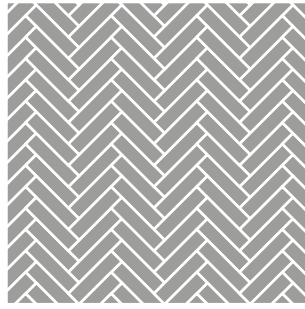


■ **Product** Off Line **Colour** Sage/Biscuit **Installed** Ashlar  
■ **Product** On Line **Colour** Biscuit **Installed** Ashlar

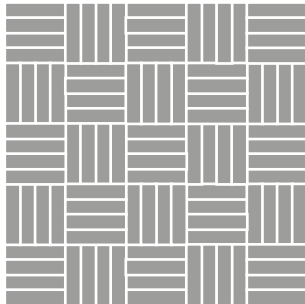


■ **Product** Off Line **Colour** Pepper/Cloud **Installed** Pattern by Tile





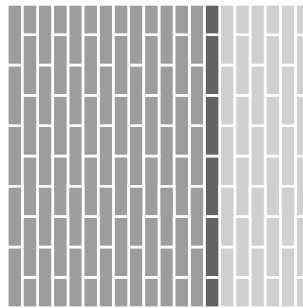
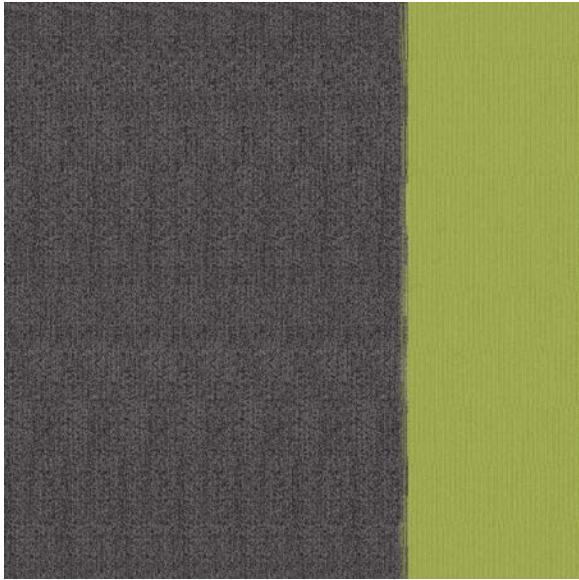
■ **Product** Off Line **Colour** Pewter/Cloud **Installed** Herringbone



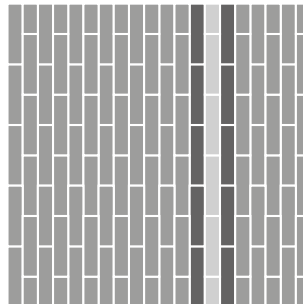
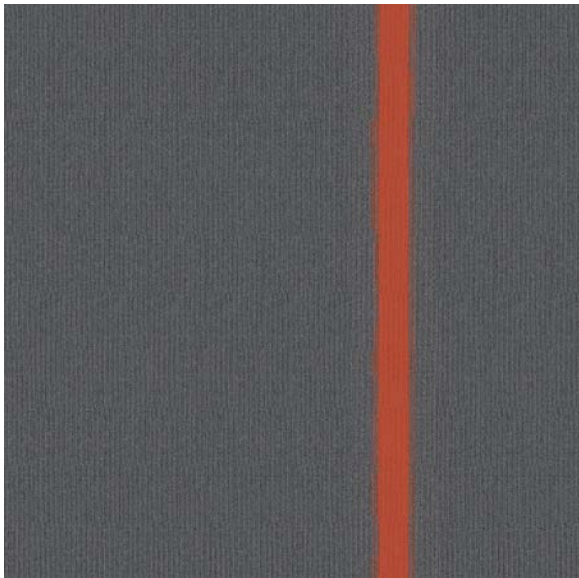
■ **Product** Off Line **Colour** Sage/Canary **Installed** Pattern by Tile

## Design Ideas

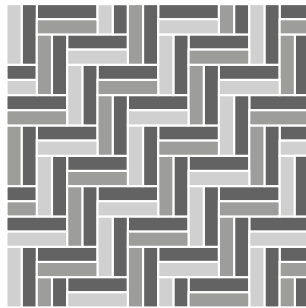
Below are floor layouts showing how to create the design ideas shared in several of the images featured in this brochure.



- **Product** Off Line **Colour** Pepper/Lime **Installed** Ashlar
- **Product** On Line **Colour** Lime **Installed** Ashlar
- **Product** On Line **Colour** Pepper **Installed** Ashlar



- **Product** Off Line **Colour** Pewter/Mandarin **Installed** Ashlar
- **Product** On Line **Colour** Pewter **Installed** Ashlar
- **Product** On Line **Colour** Mandarin **Installed** Ashlar



- **Product** On Line **Colour** Pewter **Installed** Pattern by Tile
- **Product** Off Line **Colour** Pewter/Mandarin **Installed** Pattern by Tile
- **Product** Off Line **Colour** Pewter/Cloud **Installed** Pattern by Tile

