



www.interfacehospitality.com

United States Headquarters

1503 Orchard Hill Road
LaGrange, GA 30240
1.800.336.0225 ext.6511

Canadian Headquarters

233 Lahr Drive
Belleville, ON K8N 5S2
1.800.267.2149 ext.2128

Mexican Headquarters

Montes Urales # 415 Piso 6
Col. Lomas de Chapultepec
México City, D.F. 11000
+ 52 55 6395 5100

Latin American Headquarters

Rua Surubim, 577 - Conjuntos
73/74 7º Andar
04571-050 - São Paulo - SP
Brazil
+ 55 11 2196 0900

11/2015
IFS00700

Interface Hospitality



NEAR & FAR COLLECTION

Travel to the edges, where the real lives are lived.

Fine craftsmanship is marked by the ability to expose the inherent beauty of the materials used. It is a kind of authenticity we learned from our best design-mentor, nature. Every time a designer chooses to engage nature as source and inspiration, beautiful things emerge and we find paths to reconnect our modern lives with the physical world.

Near & Far Collection can be found somewhere between made and found. The organic reference is clear, but we can see the artisan's hand in the shape and materials. NF400™ studies shade and hue in striations while NF401™ explores these ideas in greater dimensions with carving and depth and curvilinear movements. The juxtaposition of the two set side by side awakens the edges, adding a third design element to explore.



A
PRODUCT: NF400
SIZE: 25cm x 1m
COLOR: Hemp
INSTALLATION: Pattern by Tile

COVER
PRODUCTS: NF400, NF401
SIZE: 25cm x 1m
COLOR: Linen
INSTALLATION: Ashlar

A



A PRODUCT: NF400
 SIZE: 25cm x 1m
 COLOR: Felt
 INSTALLATION: Herringbone

Collection
NEAR & FAR

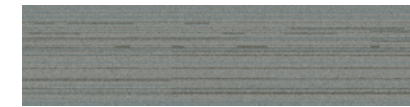
Product
NF400



PRODUCT SPECIFICATIONS

- NF400**
 Style: 138760AK0H (25cm x 1m)
-
- Backing System**
 GlasBac®RE Tile
-
- Yarn System**
 100% Recycled Content Type 6 Nylon
-
- Yarn Manufacturer**
 Aquafil
-
- Color System**
 100% Solution Dyed
-
- Construction**
 Tufted Textured Loop
-
- Lifetime Antimicrobial**
 Intersept®
-
- Soil / Stain Protection**
 Protekt2®
-
- Pile Thickness**
 0.124 in., 3.1 mm
-
- Pile Density**
 6,387 oz/yd²
-
- Total Recycled Content**
 79% (35% Post-Consumer)
-
- Installation**
 Ashlar, Herringbone
-
- CRI Green Label Plus**
 GLP0820

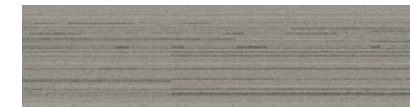
COLORLINE



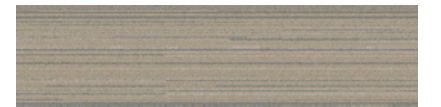
104484 FELT



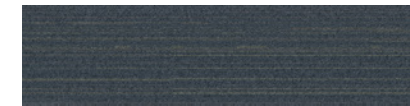
104485 MINERAL



104486 DRIFTWOOD



104487 LINEN



104488 SHALE



104490 HEMP



104491 WALNUT



104492 WHEAT



PRODUCT SPECIFICATIONS

NF401 Style: 127860AK0H (25cm x 1m)
Backing System GlasBac®RE Tile
Yarn System 100% Recycled Content Type 6 Nylon
Yarn Manufacturer Aquafil
Color System 100% Solution Dyed
Construction Tufted Sheared
Lifetime Antimicrobial Intersept®
Soil / Stain Protection Protekt2®
Pile Thickness 0.173 in., 4.4 mm
Pile Density 7,075 oz/yd ²
Total Recycled Content 81% (34% Post-Consumer)
Installation Ashlar, Herringbone
CRI Green Label Plus GLP0820

COLORLINE



104742 MINERAL



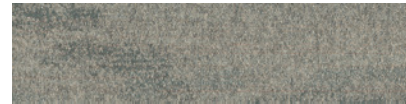
104743 FELT



104744 SHALE



104745 LINEN



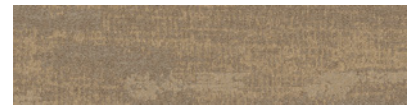
104746 DRIFTWOOD



104747 HEMP



104748 WALNUT



104749 WHEAT



A PRODUCT: NF401
SIZE: 25cm x 1m
COLOR: Shale
INSTALLATION: Ashlar

B PRODUCT: NF400
 SIZE: 25cm x 1m
 COLOR: Wheat
 INSTALLATION: Ashlar

A PRODUCT: NF401
 SIZE: 25cm x 1m
 COLOR: Hemp
 INSTALLATION: Ashlar

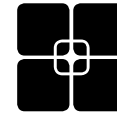


WHY MODULAR CARPET TILE?



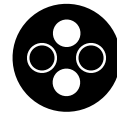
Flexibility

Keep Your Floor Beautiful. Modular carpet tile allows you to play with pattern and design without having to special order carpet sizes. And the same flexibility that lets you create your floor helps you keep it looking good because in-house staff can easily replace individual tiles that become damaged or heavily soiled—no down time or outside contractors required.



TacTiles®

No Glue Installation. Installation or reconfiguration with our glue-free TacTiles installation system means there's no glue smell and no drying time. Guests can use the room as soon as the last piece is laid and all they'll notice is a beautiful floor.



Intersept®

Mold Protection. No matter what's spilled on the floor, our proprietary preservative, Intersept®, protects our modular carpet against the growth of odor-causing bacteria—guaranteed. With proper maintenance Intersept treated carpet safely and effectively inhibits the growth of mold and other bacteria so your floors are always fresh.



Less Waste

Save Money. Interface Hospitality's carpet tile averages just 3.9% installation waste compared to as much as 18% or more with patterned roll carpet. Use our non directional styles with an average of 1.5% waste and save even more. That means more of your flooring investment stays on the floor—not in a dumpster.



Sustainable Choice

Environmental Responsibility. Interface was the industry's first to earn an EPD (Environmental Product Declaration), which evaluates consistent factors based on full lifecycle assessment (LCA). In addition, all of our products with GlasBac®, GlasBacRE and NexStep® backings meet NSF/ANSI 140 Sustainable Assessment for Carpet.



InterComfort™

Comfort underfoot. Offer guests the additional comfort and acoustical benefits of a cushion underlay with InterComfort, Interface Hospitality's cushion that installs easily and prevents damage to your subfloor. InterComfort is available in two formats—InterComfort PS+ for public spaces and InterComfort GR for guest rooms.



Cool Carpet™
 Our third party verified carbon offset program zeroes out all greenhouse gas (GHG) emissions associated with the entire lifecycle of your carpet.

Sustainable Assessment for Carpet
 The only carpet sustainability standard in North America that evaluates the environmental impact of carpet for its entire lifecycle.

CRI Green Label Plus
 An independent testing program that identifies carpet and adhesives with very low emissions of VOCs to help improve indoor air quality.

Environmental Product Declaration (EPD)
 A statement of product ingredients and environmental impacts over the entire lifecycle of a product. A comprehensive life cycle assessment (LCA) is performed to ISO standards to develop an EPD, after which both the EPD and the LCA must be third party verified.