

Near & Far Collection

www.interface.com

United States Headquarters

1503 Orchard Hill Road
LaGrange, GA 30240
1.800.336.0225 ext.6511

Canadian Headquarters

233 Lahr Drive
Belleville, ON K8N 5S2
1.800.267.2149 ext.2128

Brazilian Headquarters

Rua Surubim, 577 - Conjuntos
73/74 7º Andar
04571-050 - São Paulo - SP
+ 55 11 2196 0900

Latin American Headquarters

Montes Urales # 415 Piso 6
Col. Lomas de Chapultepec
México City, D.F. 11000
Mexico
+ 52 55 6395 5100

CIM # IFS00689 06/2015



Mission Zero[®]
our promise to eliminate any
negative impact our company
may have on the environment
by the year 2020.

Interface[®]

Near & Far™ Collection

Fine craftsmanship is marked by the ability to expose the inherent beauty of the materials used; mastery of technique draws nuanced effects through color placement, texture and finish. It is a kind of authenticity we learned from our best design-mentor, nature. Every time a designer chooses to engage nature as source and inspiration, beautiful things emerge and we find paths to reconnect our modern lives with the physical world. And that is a good thing.

Near & Far Collection can be found somewhere between made and found. The organic reference is clear, but we can see the artisan's hand in the shape and materials. NF400™ studies shade and hue in striations that run the length of our 25cm x 1m skinny plank. NF401™ explores these ideas in greater dimensions with carving and depth and curvilinear movements. The juxtaposition of the two set side by side awakens the edges, adding a third design element to explore.

The latest addition to our growing global category, Near & Far is made with 100% recycled nylon made in part from reclaimed fishing nets. And when its useful life is through, it can be reclaimed for recycling through Interface's ReEntry® program. And that is another good thing.







www.interface.com

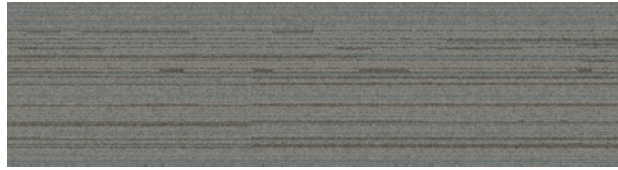
PRODUCT NF401 COLOR 104749 WHEAT INSTALLED ASHLAR



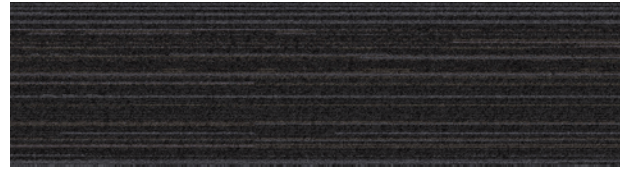
PRODUCT NF400 COLOR 104490 HEMP PRODUCT NF401
COLOR 104747 HEMP INSTALLED ASHLAR



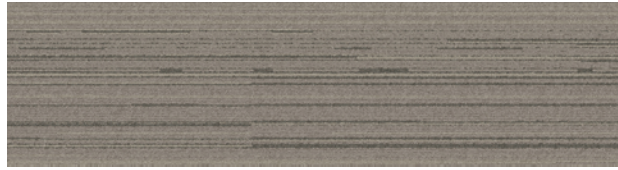
NF400™ Colorline



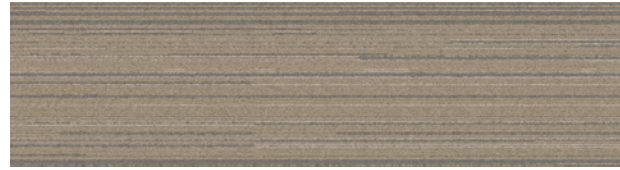
104484 FELT



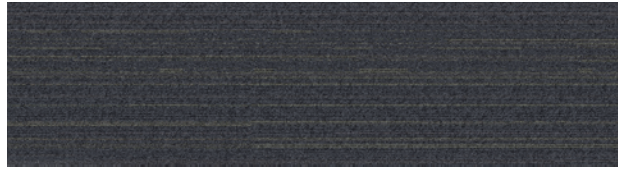
104485 MINERAL



104486 DRIFTWOOD



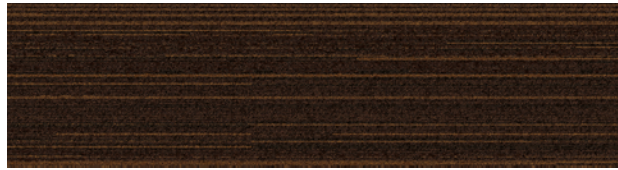
104487 LINEN



104488 SHALE



104490 HEMP



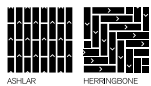
104491 WALNUT



104492 WHEAT

Specifications **i2**

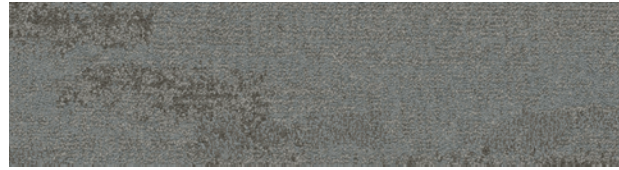
Modular, 25cm x 1m	138760AK0H
Backing System	GlasBac®RE Tile
Yarn Manufacturer	Aquafil
Yarn System	100% Recycled Content Type 6 Nylon
Color System	100% Solution Dyed
Construction	Tufted Textured Loop
Lifetime Antimicrobial	Intersept®
Soil/Stain Protection	Protekt2®
Pile Thickness	0.124 in., 3.1 cm
Pile Density	6,387
Total Recycled Content	79% (35% Post-Consumer)
Indoor Air Quality	CRI Green Label Plus #GLP0820



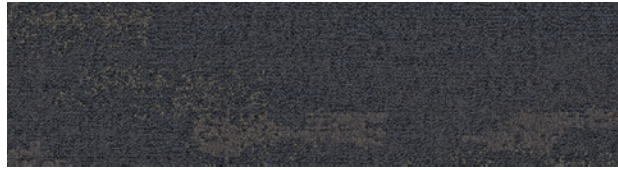
NF401™ Colorline



104742 MINERAL



104743 FELT



104744 SHALE



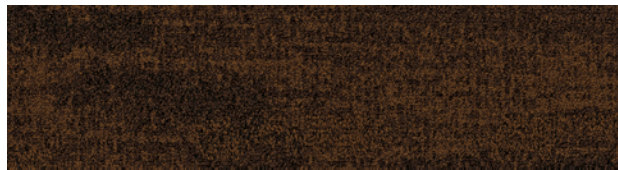
104745 LINEN



104746 DRIFTWOOD



104747 HEMP



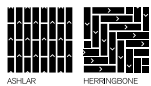
104748 WALNUT



104749 WHEAT

Specifications **i2**

Modular, 25cm x 1m	127860AK0H
Backing System	GlasBac®RE Tile
Yarn Manufacturer	Aquafil
Yarn System	100% Recycled Content Type 6 Nylon
Color System	100% Solution Dyed
Construction	Tufted Sheared
Lifetime Antimicrobial	Intersept®
Soil/Stain Protection	Protekt2®
Pile Thickness	0.173 in., 4.4 cm
Pile Density	7,075
Total Recycled Content	81% (34% Post-Consumer)
Indoor Air Quality	CRI Green Label Plus #GLP0820





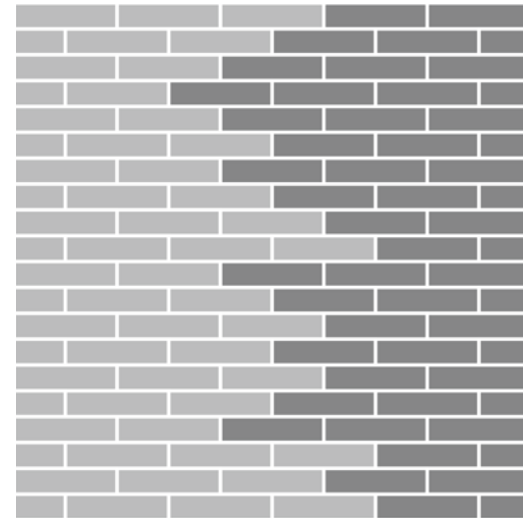
PRODUCT NF400 COLOR 104485 MINERAL PRODUCT NF401
COLOR 104745 LINEN INSTALLED ASHLAR

www.interface.com

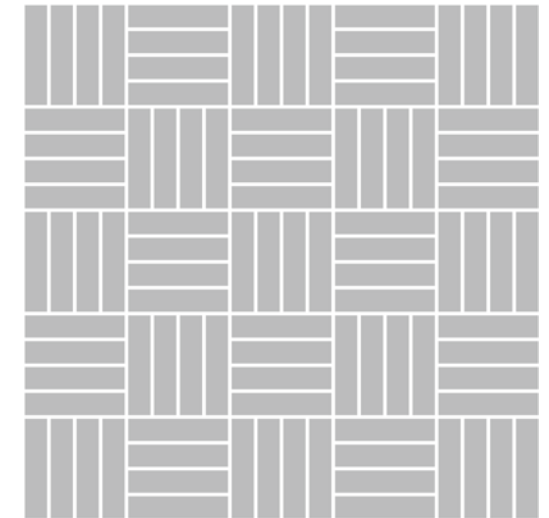


PRODUCT NF400 COLOR 104485 MINERAL PRODUCT NF401
COLOR 104742 MINERAL INSTALLED PATTERN BY TILE

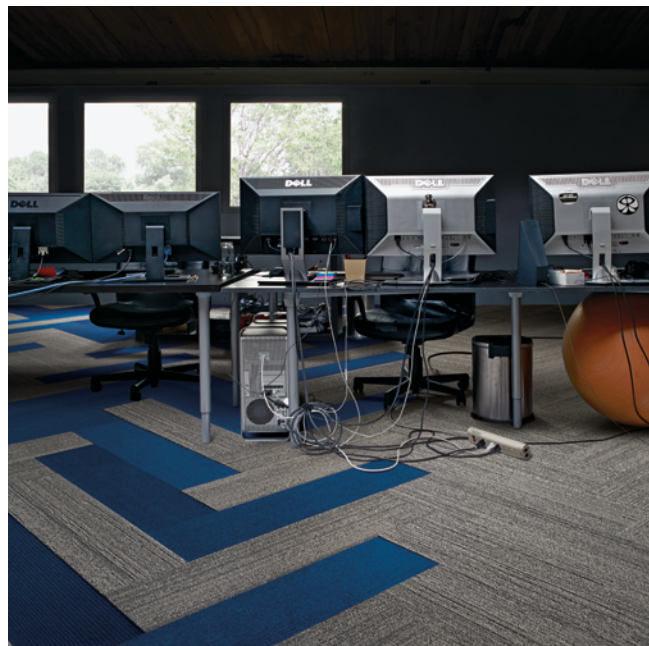
Design Ideas Below are floor layouts showing how to create the design ideas shared in several of the images featured in this brochure.



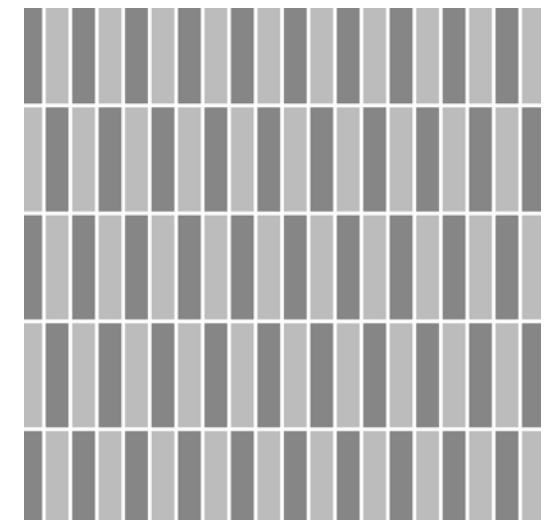
**PRODUCT NF400 COLOR 104484 FELT PRODUCT NF401 COLOR 104743 FELT
INSTALLED ASHLAR**



PRODUCT NF400 COLOR 104486 DRIFTWOOD INSTALLED PATTERN BY TILE



**PRODUCT NF400 COLOR 104486 DRIFTWOOD COLLECTION NET EFFECT™ PRODUCT B703 COLOR 103965 ATLANTIC
INSTALLED HERRINGBONE**



**PRODUCT NF400 COLOR 104485 MINERAL PRODUCT NF401 COLOR 104742 MINERAL
INSTALLED PATTERN BY TILE**

Why Our Modular Carpet?



i2® Modular Carpet

Minimize Waste & Save Money.

Interface's i2 styles have mergeable dye lots. That means i2 tiles from different dye lots always blend with tiles of the same color, even when individual tiles are selectively replaced years later. This minimizes the need for attic stock and saves money. And i2 styles that install non directionally generate an average of only 1.5% installation waste as compared to 3-4% for typical modular carpet and an average of 14% for traditional roll carpet.



Cool Carpet™

The Low Carbon Option.

Help stop climate change. ALL Interface modular carpet sold in North America is third party verified climate neutral Cool Carpet. We start by using low-carbon materials and manufacturing processes, then Cool Carpet zeros out all remaining greenhouse gas (GHG) emissions associated with the entire lifecycle of your carpet from raw material extraction through use and recycling. And climate neutral Cool Carpet may be eligible for a USGBC or CaGBC LEED Innovation Credit.



TacTiles®

No Glue Installation. Our revolutionary TacTiles installation system eliminates the need for glue, adhering tiles securely together to form a floor that "floats" for greater flexibility, easier replacement and long-term performance. The result? Less mess, less waste and virtually no VOCs, not to mention an environmental footprint that is over 90% lower than that of traditional glue adhesives.



Intersept®

Mold Protection. Our proprietary preservative, Intersept, protects our modular carpet against mold growth and odor-causing bacteria — guaranteed. Intersept treated carpet, with proper maintenance, shows no mold or bacterial growth when tested per the ASTM E2471 Standard Test Method. Intersept is EPA approved for safe use in carpet, water insoluble and contains no halogens, heavy metals, phenols or formaldehyde.



ReEntry®

Recyclable is Now a Reality. Through our ReEntry program and partnerships with our fiber suppliers and recycling centers throughout North America, separated Type 6 and 6,6 nylon are recycled into new 6 and 6,6 nylon, while separated GlasBac® and similar competitor backings are recycled into GlasBacRE non-virgin PVC backing using our Cool Blue™ technology. The result? Products with up to 81% total recycled content, including as much as 35% post-consumer content.



Sustainable Choice

Environmental Responsibility. Interface was the industry's first to publish an EPD (Environmental Product Declaration), which evaluates consistent factors based on full lifecycle assessment (LCA). We now have published EPDs for more than 99% of our products globally.

In addition, all Interface products with GlasBacRE backing meet the Platinum level of the NSF/ANSI 140 Sustainable Assessment for Carpet. GlasBac or NexStep® backed products meet the Gold level. All may contribute toward a USGBC or CaGBC LEED Innovation Credit.

Samples

Order samples at www.interface.com. You'll receive email order confirmations, 24/7 access to order status and more. Not near a computer? You can also request samples by calling one of the numbers below.

United States 1.877.605.1500	Canada 1.866.398.3192
Brazil + 55 11 2196 0900	Latin America + 52 55 6395 5100

www.interface.com

Register at www.interface.com to:

- Browse products and order samples
- View carpet in a variety of room scenes
- Use the Floors design tool to create floor layouts you can save and share
- Use our LEED Calculator
- Check order status and inventory availability
- Sign up to get the latest information on Interface products and news

InterCircle™ Sample Return

Help us close the loop on the carpet sampling process. Through our InterCircle Sample Return program, sample materials stay out of the landfill and are re-used as samples until it is time to recycle them into new carpet. By reducing sample production material and diverting old materials from the landfill, we can reduce our overall environmental footprint.

Call 1.877.605.1500 (U.S.) or 1.866.398.3192 (Canada) to order a sample return bag with a prepaid return label.

Third Party Certification



Cool Carpet – Our third party verified carbon offset program zeroes out all greenhouse gas (GHG) emissions associated with the entire lifecycle of your carpet.



Environmental Product Declaration (EPD) – A statement of product ingredients and environmental impacts over the entire life cycle of a product. A comprehensive life cycle assessment (LCA) is performed to ISO standards to develop an EPD, after which both the EPD and LCA must be third party verified.



Sustainable Assessment for Carpet – The only carpet sustainability standard in North America that evaluates the environmental impact of carpet for its entire lifecycle.



CRI Green Label Plus – An independent testing program that identifies carpet and adhesives with very low emissions of VOCs to help improve indoor air quality.

All product specifications reflect averages derived from product sample testing, are subject to normal manufacturing and testing tolerances and inherent pattern variances, and may be changed without notice. For more information about these and other important attributes of the product(s) described herein, including recycled content and product warranty information, please see www.interface.com/disclaimer.



Printed on 50% post consumer waste (PCW) fiber manufactured using wind power.

We have tried our very best to accurately represent product colors. However, due to the nature of printed materials, color of actual products may vary slightly. Please request a sample to see actual product color.