



Printed on 50% post consumer waste (PCW) fiber manufactured using wind power.

[interface.com](http://interface.com)

**United States Headquarters**  
1280 West Peachtree Street NW  
Atlanta, GA 30309  
1.800.634.6032

**Canadian Headquarters**  
233 Lahr Drive  
Belleville, ON K8N 5S2  
1.800.267.2149 ext. 52128

CIM# IFS00928 08/2023



Climate change is undeniable. And reversible. Our mission is to prove it. Join the #ClimateTakeBack and help create a climate fit for life.

# Modern Trio Collection

Diddley Dot  
Dot 2 Dot  
Dot O-Mine

**Interface®**



**Simple at the Edge of Adventurous**

Studying the works of past changemakers can propel our own creativity forward. The Modern Trio™ Collection was born from that spirit. Influenced by iconic designs of Charles Rennie Mackintosh, it plays with the simplicity of the Arts & Crafts movement and the inventive freedom of Art Nouveau. Dots, lines and color come together in fluid new patterns that reimagine modernist forms, celebrate craftsmanship and beauty and invite you to explore the potential of your next space.

Modern Trio includes 3 styles, all 25 cm x 1 m planks. Together, you can create pattern transitions across the floor, or each style impresses on its own. Diddley Dot™ offers a versatile all-over texture. Dot 2 Dot™ introduces geometric shapes with subtle shifts in positive and negative space, while Dot O-Mine™ offers a bolder take on these forms. Colorways range from restrained to complex with unexpected threads coming together in fresh accents.

No stranger to innovation, Interface carpet tile has the lowest carbon footprint in the commercial flooring industry—before any offsets. And like all Interface products, the Modern Trio Collection is third party verified carbon neutral across the full product life cycle through our Carbon Neutral Floors™ program.







## Diddlely Dot™ Color Range



108098 BEECH



108099 SUNSET



108100 CANE



108101 RAFFIA



108102 CLOUD



108103 PEBBLE



108104 NATURAL



108105 JUTE



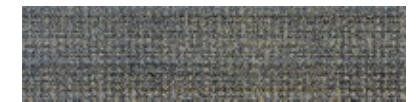
108106 CHARCOAL



108107 LAPIS



108108 TOURMALINE



108109 LEAD



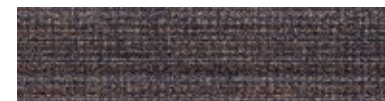
108110 GRAPHITE



108111 AZURE



108112 FOREST



108113 EMBER

## Specifications

Modular, 25 cm x 1 m	13132
Yarn Manufacturer	Aquafil
Yarn System	100% Recycled Content Nylon
Dye Method	100% Solution Dyed
Construction	Tufted Textured Loop
Preservative Protection	Intersept®
Soil/Stain Protection	Protekt <sup>2</sup> ®
Pile Thickness	0.10 in, 2.5 mm
Pile Density	7,200 oz/yd <sup>3</sup>
Total Recycled Content	Up to 84%
Indoor Air Quality	CRI Green Label Plus #GLP0820

[View the full product specification on interface.com](#)

## Installation Methods



ASHLAR



HERRINGBONE



**BROWSE IMAGES  
ORDER SAMPLES**

## Dot 2 Dot™ Color Range



108066 BEECH



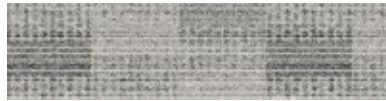
108067 SUNSET



108068 CANE



108069 RAFFIA



108070 CLOUD



108071 PEBBLE



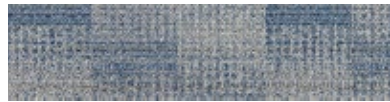
108072 NATURAL



108073 JUTE



108074 CHARCOAL



108075 LAPIS



108076 TOURMALINE



108077 LEAD



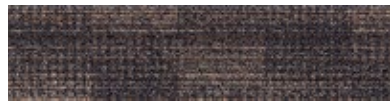
108078 GRAPHITE



108079 AZURE



108080 FOREST



108081 EMBER

## Specifications

Modular, 25 cm x 1 m	13130
Yarn Manufacturer	Aquafil
Yarn System	100% Recycled Content Nylon
Dye Method	100% Solution Dyed
Construction	Tufted Textured Loop
Preservative Protection	Intersept®
Soil/Stain Protection	Protek <sup>2</sup> ®
Pile Thickness	0.088 in, 2.2 mm
Pile Density	7,773 oz/yd <sup>3</sup>
Total Recycled Content	Up to 83%
Indoor Air Quality	CRI Green Label Plus #GLP0820

View the full product specification on [interface.com](https://www.interface.com)

## Installation Methods



ASHLAR



HERRINGBONE



**BROWSE IMAGES**  
**ORDER SAMPLES**



PRODUCT DOT 2 DOT COLORS 108080 FOREST, 108071 PEBBLE INSTALLED ASHLAR



## Dot O-Mine™ Color Range



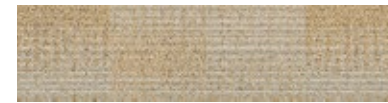
108082 BEECH



108083 SUNSET



108084 CANE



108085 RAFFIA



108086 CLOUD



108087 PEBBLE



108088 NATURAL



108089 JUTE



108090 CHARCOAL



108091 LAPIS



108092 TOURMALINE



108093 LEAD



108094 GRAPHITE



108095 AZURE



108096 FOREST



108097 EMBER

## Specifications

Modular, 25 cm x 1 m	13131
Yarn Manufacturer	Aquafil
Yarn System	100% Recycled Content Nylon
Dye Method	100% Solution Dyed
Construction	Tufted Textured Loop
Preservative Protection	Intersept®
Soil/Stain Protection	Protek <sup>2</sup> ®
Pile Thickness	0.115 in, 2.9 mm
Pile Density	6,261 oz/yd <sup>3</sup>
Total Recycled Content	Up to 84%
Indoor Air Quality	CRI Green Label Plus #GLP0820

View the full product specification on [interface.com](https://www.interface.com)

## Installation Methods



ASHLAR



HERRINGBONE



**BROWSE IMAGES**  
**ORDER SAMPLES**

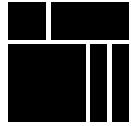


LVT PRODUCT CLIFF COLOR A02404 ALABASTER INSTALLED ASHLAR  
CARPET PRODUCT DOT O-MINE COLOR 108082 BEECH INSTALLED HERRINGBONE



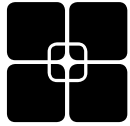
PRODUCT DIDDLEY DOT COLORS 108099 SUNSET, 108108 TOURMALINE PRODUCT DOT 2 DOT  
COLOR 108087 SUNSET PRODUCT DOT O-MINE COLOR 108083 SUNSET INSTALLED ASHLAR

## Why Our Modular Flooring?



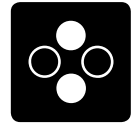
### Modular Flooring

*Performance and flexibility.* Interface's standard backing systems set the industry standard for modular performance. Tiles stay on the floor with no upcurl, no taping and no rippling effect, yet are easy to selectively replace. Our modular carpet is easier to handle than bulky roll carpet and produces an average of just 3-4% waste compared to roll carpet's average of 14%. And it installs seamlessly with our LVT, no transition strips needed.



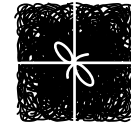
### TacTiles™

*No glue installation.* Our revolutionary TacTiles installation system eliminates the need for glue, adhering tiles securely together to form a floor that “floats” for greater flexibility, easier replacement and long-term performance. The result? Less mess, less waste and virtually no VOCs, not to mention an environmental footprint that is over 90% lower than that of traditional glue adhesives. TacTiles are approved for use on GlasBac™, CQuest™GB, CQuest™Bio and CQuest™BioX.



### Intersept®

*Mold protection.* Our proprietary preservative, Intersept, protects our modular carpet against mold growth and odor-causing bacteria—guaranteed. Intersept treated carpet, with proper maintenance, shows no mold or bacterial growth when tested per the ASTM E2471 Standard Test Method. Intersept is EPA approved for safe use in carpet, water insoluble and contains no halogens, heavy metals, phenols or formaldehyde. Intersept is standard in Interface carpet tile products backed with GlasBac, CQuestGB, ReadyBac™ and CushionBac Renew™.



### ReEntry™

*Recyclable.* Through our ReEntry program we reclaim and recycle our carpet tile and Sound Choice™ LVT. ReEntry is the only third party certified recycling system among North American flooring manufacturers.



### Sustainability Transparency

Transparency and certified sustainability leadership come standard on Interface products. We enlist outside partners to help us evaluate the entire product life cycle and reduce the environmental and human health impact of our flooring. And, carpet products made in our US facilities are made with 99% renewable energy.



### Help Lower Your Carbon Footprint

Like all the flooring products we sell, Interface carpet tile is carbon neutral across its full product life cycle through our third party verified Carbon Neutral Floors™ program. To find out more, visit [interface.com/carbonneutral](http://interface.com/carbonneutral)



**Environmental Product Declaration (EPD)** – A statement of product ingredients and environmental impacts over the entire life cycle of a product. A comprehensive life cycle assessment (LCA) is performed to ISO standards to develop an EPD, after which both the EPD and LCA must be third party verified.



**Health Product Declaration (HPD)** – A transparency tool for evaluating whether a product supports Green Chemistry. As part of our work on Health and Materials, Interface continuously reduces the environmental and health impacts of our products through elimination of materials of concern.



**CRI Green Label Plus** – An independent testing program that identifies carpet and adhesives with very low emissions of VOCs to help improve indoor air quality.



**NSF 140 Sustainable Carpet Assessment** – The only carpet sustainability standard in North America that evaluates the environmental impact of carpet for its entire life cycle.

### 📍 Samples

Register and order samples at [interface.com](http://interface.com). Not near a computer? You can also request samples by calling one of the numbers below.

United States  
1.877.605.1500

Canada  
1.866.398.3192

### [interface.com](http://interface.com)

Do more on [interface.com](http://interface.com)

- Browse products and order samples
- Save and share favorites
- See images of products in a variety of room scenes
- Browse floor designs, change colors, upload your own image, download and share
- Get full specifications, sustainability certifications and more
- Check order status and inventory availability
- Sign up to get the latest information on Interface products and news

### InterCircle Sample Return

Help us close the loop on the carpet sampling process. Through our InterCircle Sample Return program, sample materials stay out of the landfill and are re-used as samples until it is time to recycle them into new carpet. By reducing sample production material and diverting old materials from the landfill, we can reduce our overall environmental footprint.

Call 1.877.605.1500 (U.S.) or 1.866.398.3192 (Canada) to order a sample return bag with a prepaid return label.

We have tried our very best to accurately represent product colors. However, due to the nature of printed materials, color of actual products may vary slightly. Please request a sample to see actual product color.

All product specifications reflect averages derived from product sample testing, are subject to normal manufacturing and testing tolerances and inherent pattern variances, and may be changed without notice. For more information about these and other important attributes of the product(s) described herein, including recycled content and product warranty information, please see [interface.com/disclaimer](http://interface.com/disclaimer).