

A microscopic view of ice crystals, showing a dense network of thin, needle-like structures. The crystals are oriented in various directions, creating a complex, interlocking pattern. The background is a dark, textured blue, suggesting a liquid or semi-liquid state of water. The overall appearance is that of a highly ordered, crystalline structure.

Ice Breaker

Interface®

Ice Breaker™

If you were a popsicle, what flavour would you be?

That's one way to warm up a room, but our favourite Ice Breaker is on the floor. Like any lead-in, it's a little provocative and ultimately puts everyone at ease. That is the magical combination—the excitement of the unpredictable with the reliability of the familiar.

Etched and angular, the subtle, seemingly random lines of Ice Breaker reflect the cracking and crazing of frozen water creating an organic geometry that moves fluidly and seamlessly across the floor in a non directional or monolithic installation.

In colours as warm or cool as your space demands, deep dive into all nuances of grey or natural, or dial up the fun with pops of colour ...all working together to create flooring that wont go unnoticed.







PRODUCT ICE BREAKER COLOUR LAZULI, GRITSTONE INSTALLED NON DIRECTIONAL



PRODUCT ICE BREAKER COLOUR WARM ROCK, GARNET INSTALLED NON DIRECTIONAL





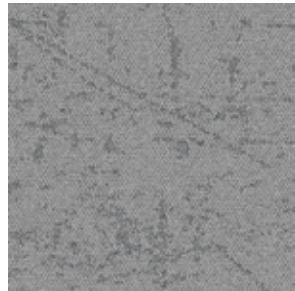
PRODUCT ICE BREAKER **COLOUR** LARIMAR **INSTALLED** NON DIRECTIONAL



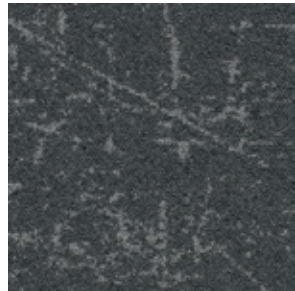
CARPET PRODUCT ICE BREAKER **COLOUR** CLAYSTONE
LVT PRODUCT TEXTURED STONES **COLOUR** DISTRESSED CONCRETE **INSTALLED** NON DIRECTIONAL



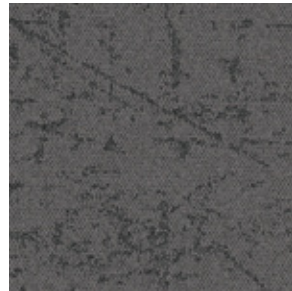
Ice Breaker Colour Range



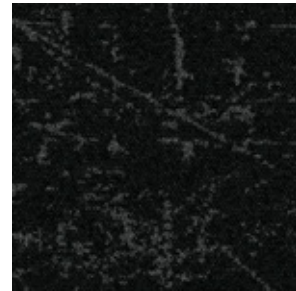
9189001 Concrete



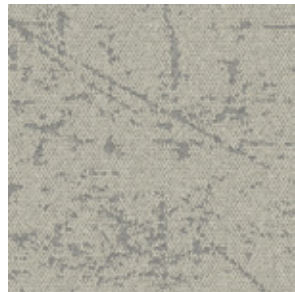
9189002 Granite



9189003 Gritstone



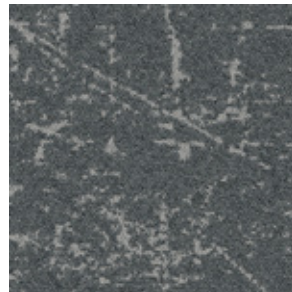
9189004 Jetmist



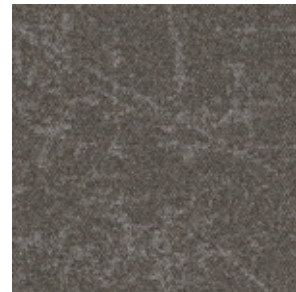
9189005 Claystone



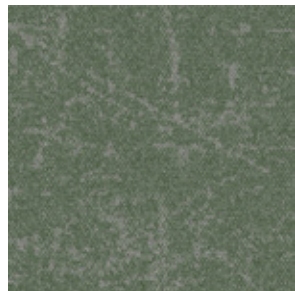
9189006 Magma



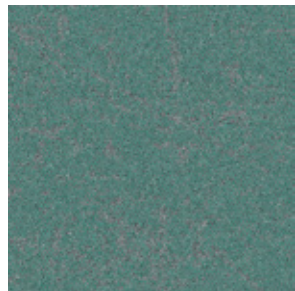
9189007 Quarry



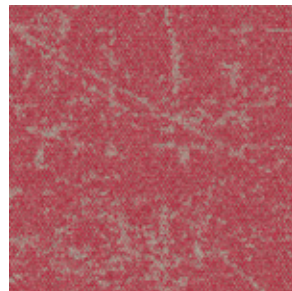
9189008 Warm Rock



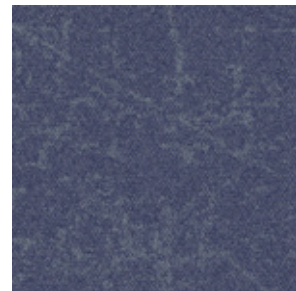
9189009 Peridot



9189019 Larimar



9189011 Garnet



9189012 Lazuli

Specifications

| | |
|------------------------|--------------------------------------|
| Style Code | 9189 |
| Product Construction | Tufted Textured Loop |
| Yarn System | 100% Solution Dyed Nylon |
| Machine Gauge | 1/12 |
| Pile Thickness | 2.5mm +/- 0.5mm |
| Total Thickness | 6.0mm +/- 0.5mm |
| Tile Size | 50x50cm |
| Area of Use | Commercial – Heavy Use |
| ACCS (Australia Only) | Commercial Extra Heavy Duty & Stairs |
| Lifetime Antimicrobial | Intersept® |
| Soil/Stain Protection | Protekt2® |
| Installation Methods | Non Directional |



NON DIRECTIONAL



Carbon Neutral Floors™



All Interface manufacturing facilities in the Asia Pacific region maintain registration to ISO 9001 Quality Management Systems and ISO 14001 Environmental Management Systems.

Production specifications are subject to normal manufacturing tolerances and may be changed without notice. Slight variation in colour among different production lots are normal and should be considered in the overall installation plan. Products covered by manufacturer's written warranty only. All other warranties, including without limitation any implied warranties of merchantability or fitness for particular purpose, are hereby disclaimed. Contact your representative for written warranty information.



Carbon Neutral Floors™

www.interface.com

Australia

Interface Australia
local toll free: 1800 804 361

India

Interface India
tel: +91 80 4613 1313

South East Asia

Interface Asia
tel: +65 6478 1510

South Korea

Interface South Korea
tel: +82 2 555 1734

Japan

Interface Japan
tel: +81 3 5733 5211

Beijing

Interface China
tel: +86 10 6590 7810

Hong Kong

Interface China
tel: +852 2802 0838

Shanghai

Interface China
tel: +86 21 6340 3868

11/2022
SF9189T0



Climate change is undeniable. And reversible. Our mission is to prove it. Join the #ClimateTakeBack and help create a climate fit for life.