

A woman with curly hair, wearing a grey jacket, white pants, and red boots, is sitting on a blue modular sofa. She is looking towards the right. The room has large, multi-paned windows with dark frames, showing green trees outside. The walls are made of brick and white brick. The floor is covered with a grey and green patterned carpet. A small white table with a vase of plants is next to the sofa. A brown bag and a white helmet are on the sofa.

# Human Connections Collection

Interface®

## Human Connections™ Collection

---

Today, we are both more connected as a society and, ironically, increasingly less connected, shielded from each other and the natural world by our screens, our cars, our homes and the buildings in which we work. But when we walk outside, our pathways reveal the importance of reconnection: the choices we make in our destinations, how we get there and the unexpected gathering places that we happen upon. Invariably we are also drawn to areas of respite where nature is present, nurtured to grow in the environment or simply there by its own persistence.

Human Connections is literally the intersection of the sensory cues that we seek to include in our fast paced lives, supporting the idea that the most positive spaces offer variability and choice. Eight different styles fit together in unique ways to create paths, intersections, collision zones and destinations. Sett in Stone™, Kerbstone™, Paver™ and Flagstone™ are four textures that recall the well-worn streets of the city, while Moss™ and Moss in Stone™ attach seamlessly to Sett in Stone to introduce the greenery we crave in a very organic way.

To complete the collection we have included two styles Rue™ and Stone Course™. These highly patterned and colourful styles add a lively graffiti-like impact.

Create your path to +Positive spaces with Human Connections.

(COVER) **PRODUCT** MOSS IN STONE **COLOUR** SLATE EDGE  
**PRODUCT** MOSS **COLOUR** SLATE/MOSS **INSTALLED** PATTERN BY TILE

**CARPET PRODUCT** FLAGSTONE **COLOUR** SLATE **CARPET TILE** STONE COURSE  
**COLOURS** TEAL/STONE, ORANGE/STONE, PURPLE/STONE  
**LVT PRODUCT** TEXTURED STONES **COLOUR** COOL POLISHED CEMENT **INSTALLED** NON DIRECTIONAL

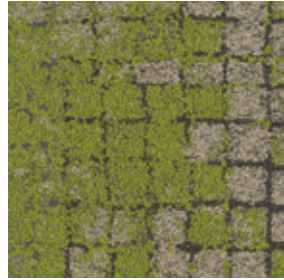




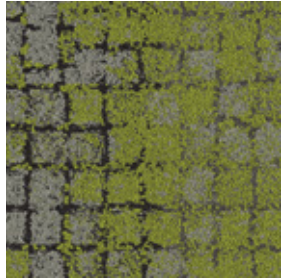
PRODUCT PAVER COLOUR ONYX CARPET TILE SET IN STONE COLOUR GRANITE  
PRODUCT URBAN RETREAT™ | UR501 COLOUR GRASS INSTALLED PATTERN BY TILE

## Moss Colour Range

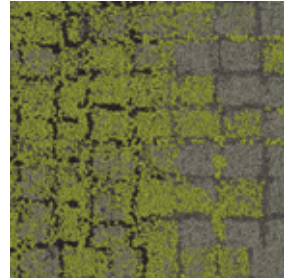
---



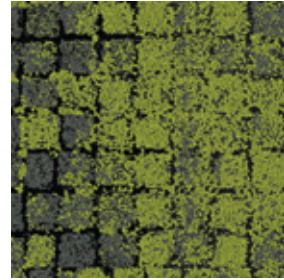
8341001 GRANITE/MOSS



8341002 SLATE/MOSS



8341003 FLINT/MOSS



8341004 ONYX/MOSS

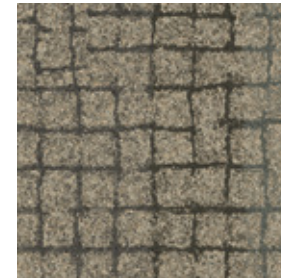


PRODUCT MOSS COLOUR FLINT/MOSS INSTALLED NON DIRECTIONAL

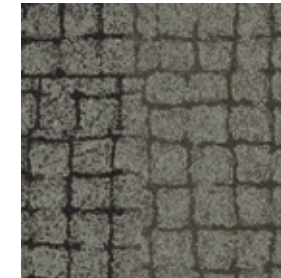


### Sett in Stone Colour Range

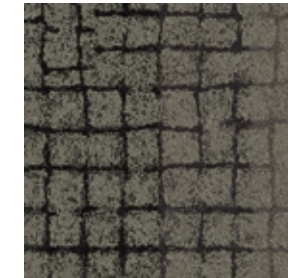
---



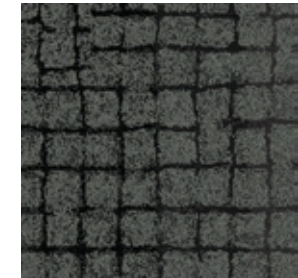
8342001 GRANITE



8342002 SLATE



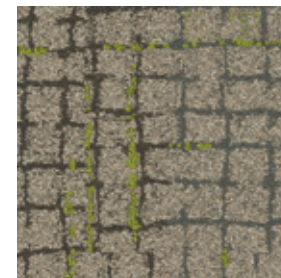
8342003 FLINT



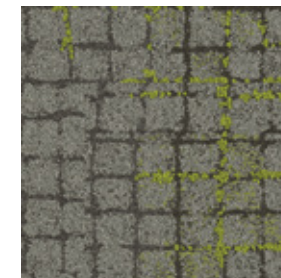
8342004 ONYX

### Moss in Stone Colour Range

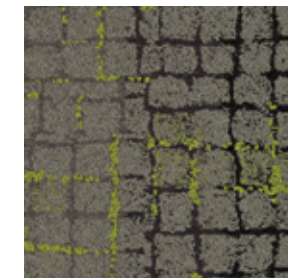
---



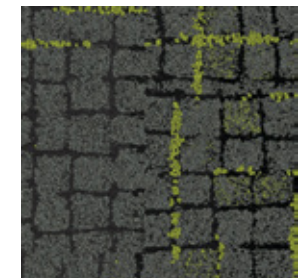
8340001 GRANITE EDGE



8340002 SLATE EDGE



8340003 FLINT EDGE



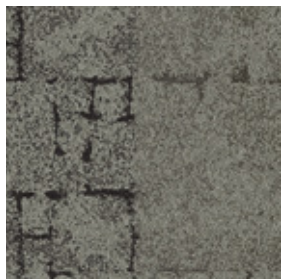
8340004 ONYX EDGE

PRODUCT SETT IN STONE COLOUR FLINT CARPET TILE MOSS IN STONE COLOUR FLINT EDGE  
PRODUCT MOSS COLOUR FLINT/MOSS INSTALLED PATTERN BY TILE

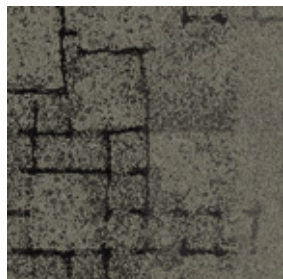
## Kerbstone Colour Range



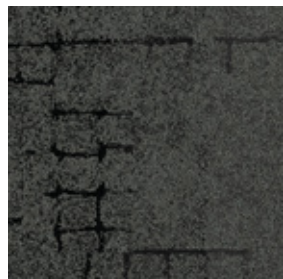
8339001 GRANITE



8339002 SLATE



8339003 FLINT



8339004 ONYX





PRODUCT PAVER COLOUR FLINT INSTALLED NON DIRECTIONAL  
PRODUCT HUMAN NATURE™ | HN850 COLOUR NICKEL INSTALLED ASHLAR

## Paver Colour Range

---



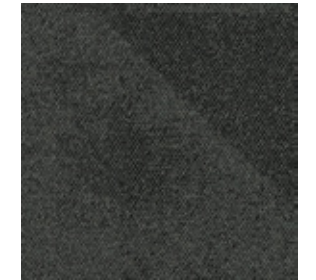
8337001 GRANITE



8337002 SLATE

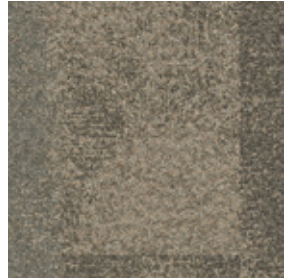


8337003 FLINT



8337004 ONYX

## Flagstone Colour Range



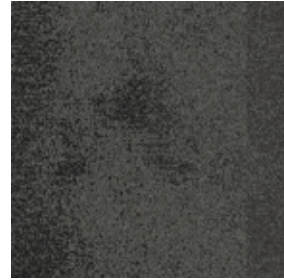
8338001 GRANITE



8338002 SLATE



8338003 FLINT



8338004 ONYX





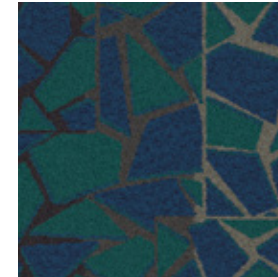


**PRODUCT RUE COLOURS** RED, ORANGE  
**PRODUCT STONE COURSE COLOURS** ORANGE/STONE, GREY/STONE  
**INSTALLED** PATTERN BY TILE

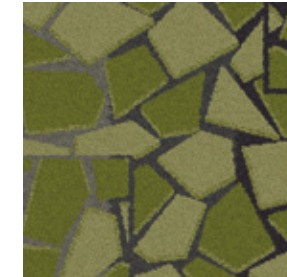
## Rue Colour Range



8344001 GREY



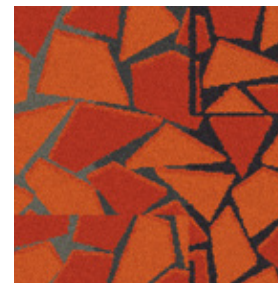
8344002 TEAL



8344003 GREEN



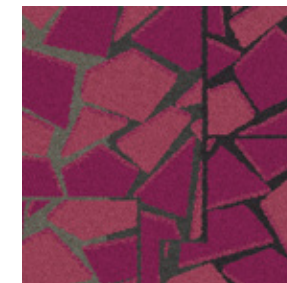
8344004 YELLOW



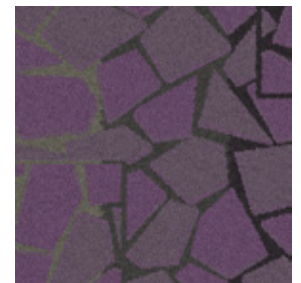
8344005 ORANGE



8344006 RED



8344007 PINK

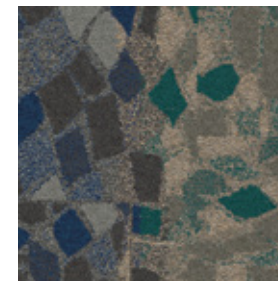


8344008 PURPLE

## Stone Course Colour Range



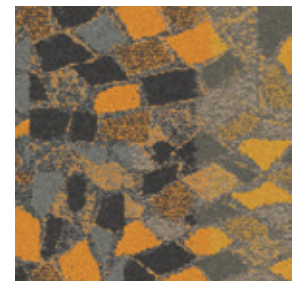
8343001 GREY/STONE



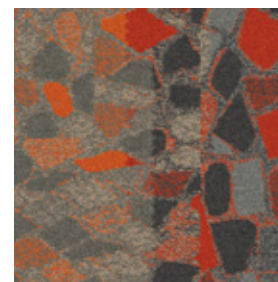
8343002 TEAL/STONE



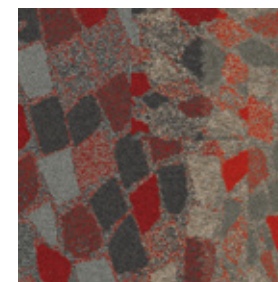
8343003 GREEN/STONE



8343004 YELLOW/STONE



8343005 ORANGE/STONE



8343006 RED/STONE

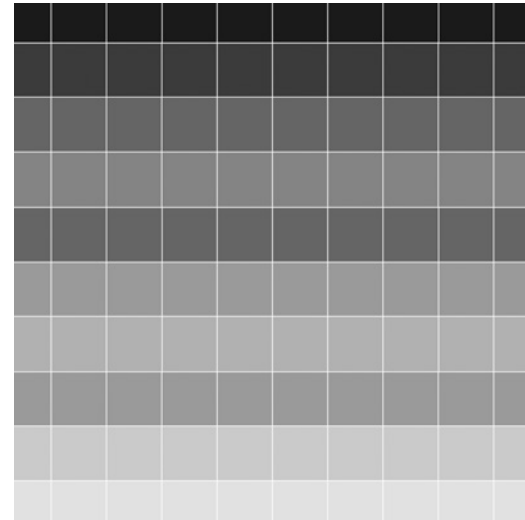


8343007 PINK/STONE

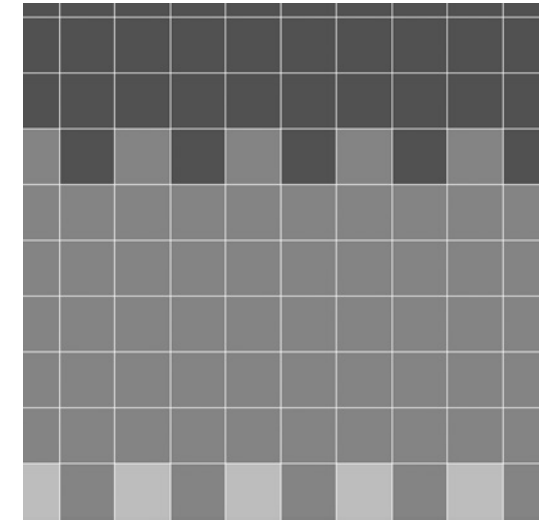
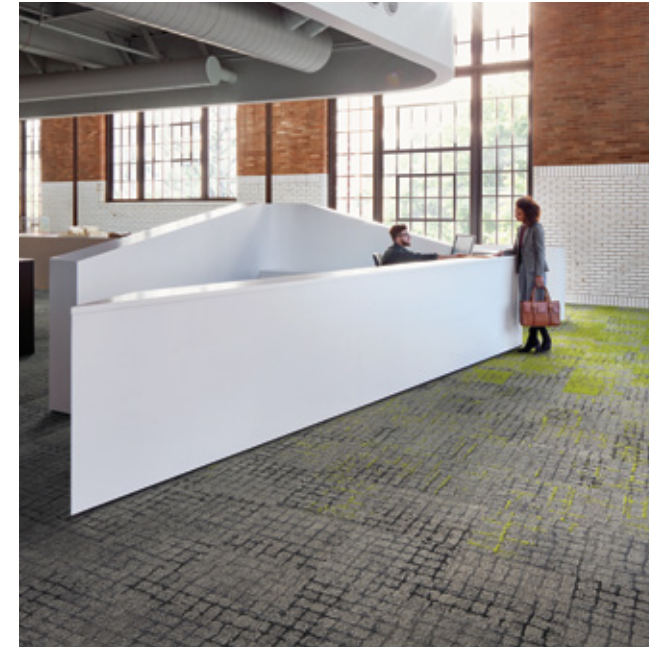


8343008 PURPLE/STONE

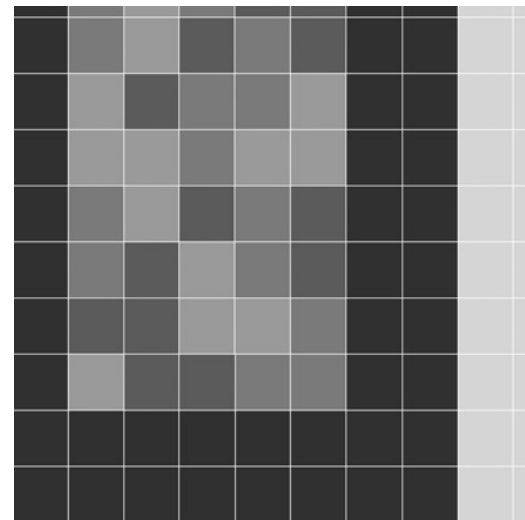
**Design Ideas** Below are floor layouts showing how to create the design ideas shared in several of the images featured in this brochure.



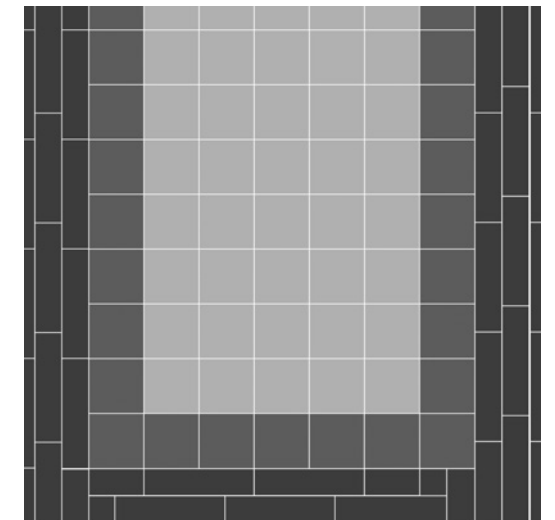
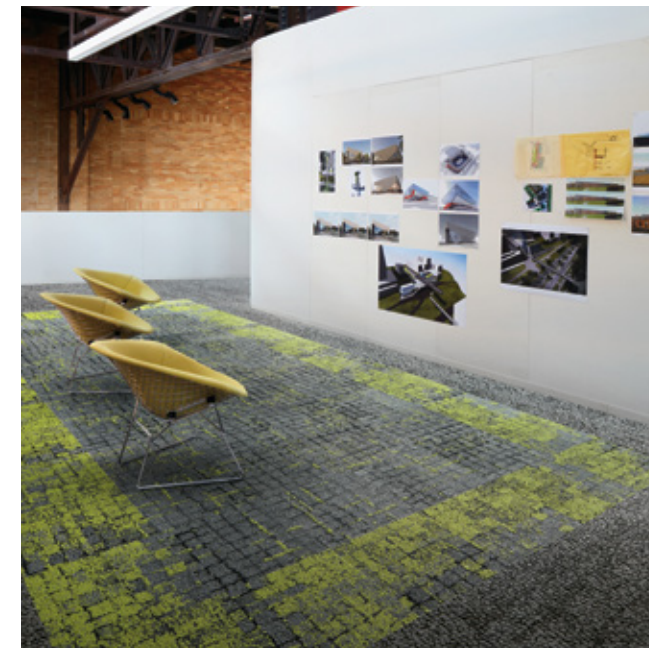
**PRODUCT** MOSS IN STONE **COLOURS** GRANITE EDGE, SLATE EDGE, FLINT EDGE, ONYX EDGE **PRODUCT** MOSS **COLOURS** GRANITE/MOSS, SLATE/MOSS, FLINT/MOSS, ONYX/MOSS **INSTALLED** PATTERN BY TILE



**PRODUCT** SETT IN STONE **COLOUR** FLINT **PRODUCT** MOSS IN STONE **COLOUR** FLINT EDGE **PRODUCT** MOSS **COLOUR** FLINT/MOSS **INSTALLED** PATTERN BY TILE

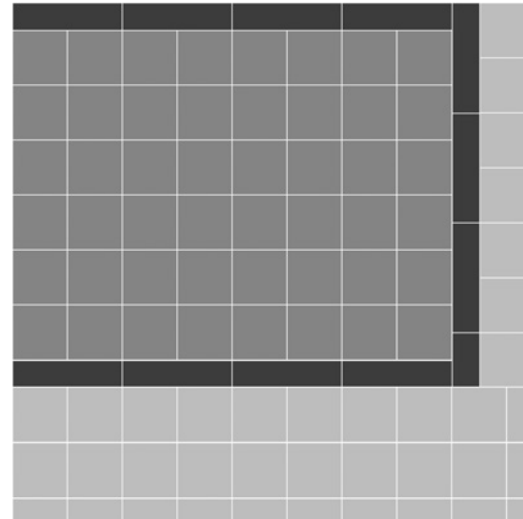


**CARPET PRODUCT** FLAGSTONE **COLOUR** SLATE **CARPET PRODUCT** STONE COURSE **COLOURS** TEAL/STONE, ORANGE/STONE, PURPLE/STONE **LVT PRODUCT** TEXTURED STONES **COLOUR** COOL POLISHED CEMENT **INSTALLED** NON DIRECTIONAL

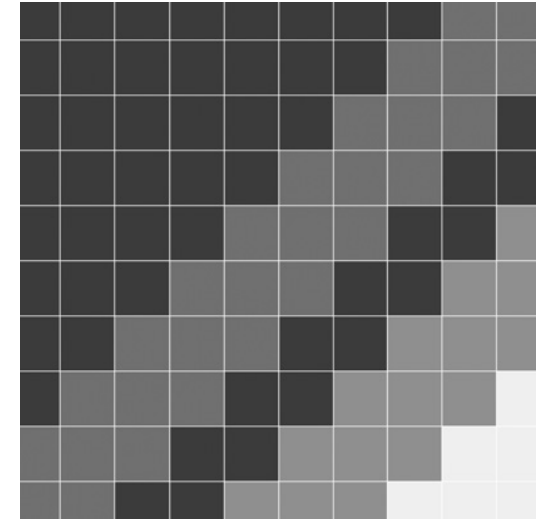
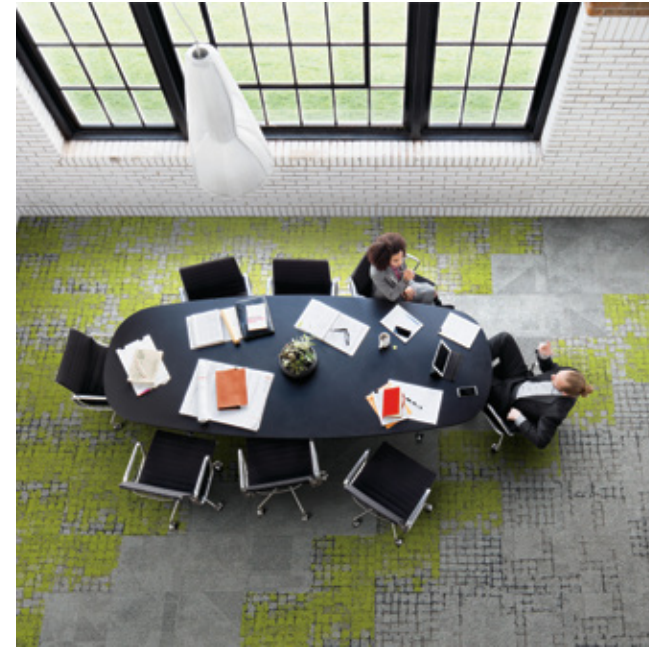


**PRODUCT** HUMAN NATURE | HN840 **COLOUR** SLATE **PRODUCT** MOSS **COLOURS** SLATE/MOSS, ONYX/MOSS **PRODUCT** MOSS IN STONE **COLOUR** ONYX EDGE **INSTALLED** PATTERN BY TILE

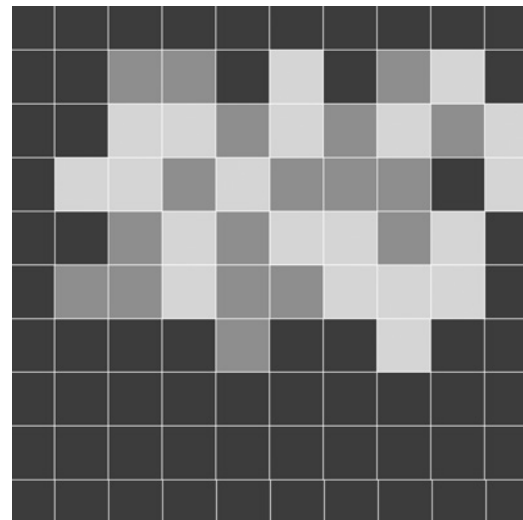
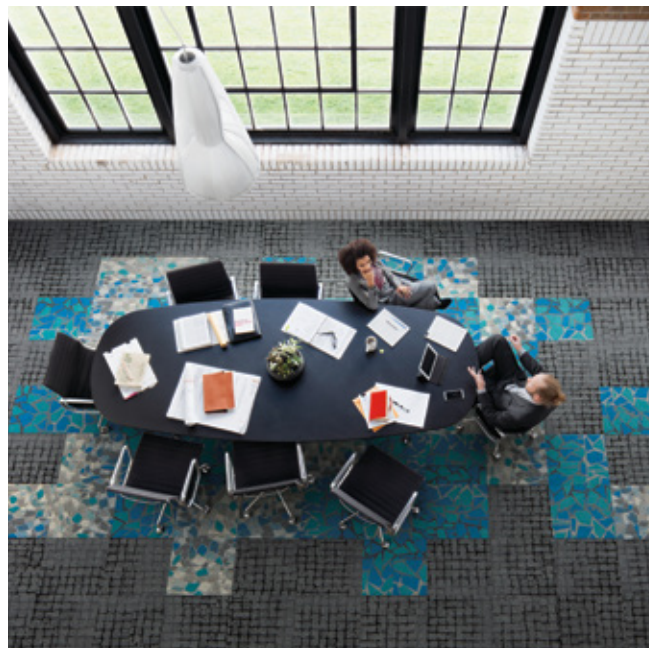
**Design Ideas** Below are floor layouts showing how to create the design ideas shared in several of the images featured in this brochure.



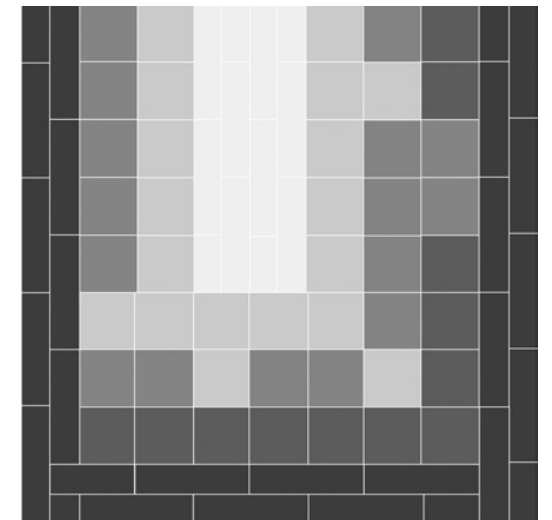
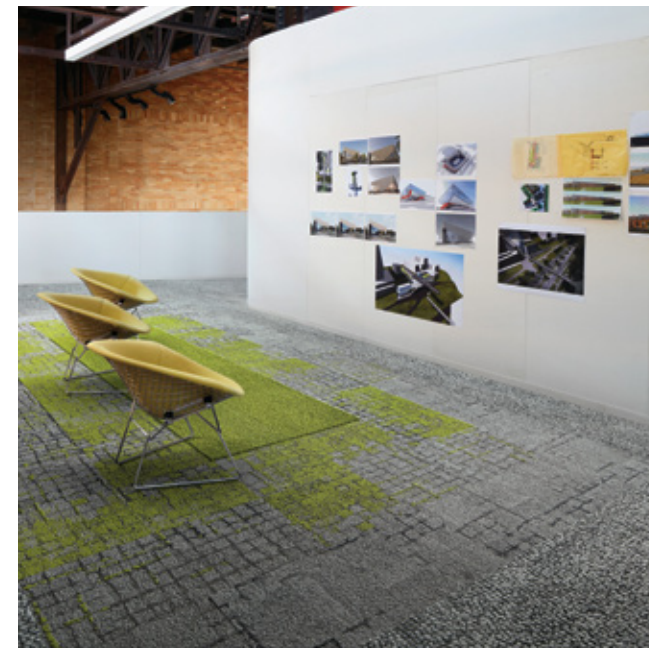
**PRODUCT PAVER COLOUR ONYX PRODUCT SETT IN STONE COLOUR GRANITE  
PRODUCT URBAN RETREAT | UR501 COLOUR GRASS INSTALLED PATTERN BY TILE**



**PRODUCT MOSS COLOUR SLATE/MOSS PRODUCT PAVER COLOUR SLATE PRODUCT SETT IN STONE COLOUR SLATE  
PRODUCT KERBSTONE COLOUR SLATE INSTALLATION PATTERN BY TILE**



**PRODUCT SETT IN STONE COLOUR ONYX PRODUCT STONE COURSE COLOUR TEAL/STONE PRODUCT RUE COLOUR TEAL INSTALLED  
PATTERN BY TILE**



**PRODUCT KERBSTONE COLOUR SLATE CARPET TILE MOSS IN STONE COLOUR SLATE EDGE PRODUCT MOSS COLOUR SLATE/MOSS  
PRODUCT HUMAN NATURE | HN830 COLOUR KIWII PRODUCT HUMAN NATURE | HN840 COLOUR LIMESTONE  
INSTALLATION PATTERN BY TILE**

## Specifications

### Moss™ i2

Style Code	8341
Product Construction	Tufted Textured Loop
Yarn System	100% Recycled Solution Dyed Nylon
Machine Gauge	1/10 Tapestry
Pile Thickness	3.0mm +/- 0.5mm
Total Thickness	6.5mm +/- 0.5mm
Tile Size	50cm x 50cm
Area of Use	Commercial – Heavy Use
ACCS (Australia Only)	Commercial Extra Heavy Duty & Stairs
Lifetime Antimicrobial	Intersept®
Soil/Stain Protection	Protekt2®
Installation Methods	Non Directional



NON DIRECTIONAL

### Sett in Stone™ i2

Style Code	8342
Product Construction	Tufted Textured Loop
Yarn System	100% Recycled Solution Dyed Nylon
Machine Gauge	1/10 Tapestry
Pile Thickness	3.0mm +/- 0.5mm
Total Thickness	6.5mm +/- 0.5mm
Tile Size	50cm x 50cm
Area of Use	Commercial – Heavy Use
ACCS (Australia Only)	Commercial Extra Heavy Duty & Stairs
Lifetime Antimicrobial	Intersept®
Soil/Stain Protection	Protekt2®
Installation Methods	Non Directional



NON DIRECTIONAL

### Moss in Stone™ i2

Style Code	8340
Product Construction	Tufted Textured Loop
Yarn/Fibre	100% Recycled Solution Dyed Nylon
Machine Gauge	1/10 Tapestry
Pile Thickness	3.0mm +/- 0.5mm
Total Thickness	6.5mm +/- 0.5mm
Tile Size	50cm x 50cm
Area of Use	Commercial – Heavy Use
ACCS (Australia Only)	Commercial Extra Heavy Duty & Stairs
Lifetime Antimicrobial	Intersept®
Soil/Stain Protection	Protekt2®
Installation Methods	Non Directional



NON DIRECTIONAL

### Kerbstone™ i2

Style Code	8339
Product Construction	Tufted Textured Loop
Yarn System	100% Recycled Solution Dyed Nylon
Machine Gauge	1/10 Tapestry
Pile Thickness	3.0mm +/- 0.5mm
Total Thickness	6.5mm +/- 0.5mm
Tile Size	50cm x 50cm
Area of Use	Commercial – Heavy Use
ACCS (Australia Only)	Commercial Extra Heavy Duty & Stairs
Lifetime Antimicrobial	Intersept®
Soil/Stain Protection	Protekt2®
Installation Methods	Non Directional



NON DIRECTIONAL

### Paver™ i2

Style Code	8337
Product Construction	Tufted Textured Loop
Yarn System	100% Recycled Solution Dyed Nylon
Machine Gauge	1/12
Pile Thickness	3.0mm +/- 0.5mm
Total Thickness	6.5mm +/- 0.5mm
Tile Size	50cm x 50cm
Area of Use	Commercial – Heavy Use
ACCS (Australia Only)	Commercial Extra Heavy Duty & Stairs
Lifetime Antimicrobial	Intersept®
Soil/Stain Protection	Protekt2®
Installation Methods	Non Directional



NON DIRECTIONAL

### Flagstone™ i2

Style Code	8338
Product Construction	Tufted Textured Loop
Yarn System	100% Recycled Solution Dyed Nylon
Machine Gauge	1/10 Tapestry
Pile Thickness	3.0mm +/- 0.5mm
Total Thickness	6.5mm +/- 0.5mm
Tile Size	50cm x 50cm
Area of Use	Commercial – Heavy Use
ACCS (Australia Only)	Commercial Extra Heavy Duty & Stairs
Lifetime Antimicrobial	Intersept®
Soil/Stain Protection	Protekt2®
Installation Methods	Non Directional



NON DIRECTIONAL

## Specifications

### Rue™

Style Code	8344
Product Construction	Tufted Textured Loop
Yarn System	100% Recycled Solution Dyed Nylon
Machine Gauge	1/10 Tapestry
Pile Thickness	4.0mm +/- 0.5mm
Total Thickness	8.0mm +/- 0.5mm
Tile Size	50cm x 50cm
Area of Use	Commercial – Heavy Use
ACCS (Australia Only)	Commercial Extra Heavy Duty & Stairs
Lifetime Antimicrobial	Intersept®
Soil/Stain Protection	Protekt2®
Installation Methods	Non Directional



NON DIRECTIONAL

### Stone Course™

Style Code	8343
Product Construction	Tufted Textured Loop
Yarn System	100% Recycled Solution Dyed Nylon
Machine Gauge	1/10 Tapestry
Pile Thickness	3.5mm +/- 0.5mm
Total Thickness	7.5mm +/- 0.5mm
Tile Size	50cm x 50cm
Area of Use	Commercial – Heavy Use
ACCS (Australia Only)	Commercial Extra Heavy Duty & Stairs
Lifetime Antimicrobial	Intersept®
Soil/Stain Protection	Protekt2®
Installation Methods	Non Directional



NON DIRECTIONAL



Carbon Neutral Floors™



All Interface manufacturing facilities in the Asia Pacific region maintain registration to ISO 9001 Quality Management Systems and ISO 14001 Environmental Management Systems.

Production specifications are subject to normal manufacturing tolerances and may be changed without notice. Slight variation in colour among different production lots are normal and should be considered in the overall installation plan. Products covered by manufacturer's written warranty only. All other warranties, including without limitation any implied warranties of merchantability or fitness for particular purpose, are hereby disclaimed. Contact your representative for written warranty information.



**Carbon Neutral Floors™**

**[www.interface.com](http://www.interface.com)**

**Australia**

Interface Australia  
local toll free: 1800 804 361

**India**

Interface India  
tel: +91 80 4613 1313

**South East Asia**

Interface Asia  
tel: +65 6478 1510

**South Korea**

Interface South Korea  
tel: +82 2 555 1734

**Japan**

Interface Japan  
tel: +81 3 5733 5211

**Beijing**

Interface China  
tel: +86 10 6590 7810

**Hong Kong**

Interface China  
tel: +852 2802 0838

**Shanghai**

Interface China  
tel: +86 21 6340 3868

11/2022  
SF0096T0



Climate change is undeniable. And reversible. Our mission is to prove it.  
**Join the #ClimateTakeBack and help create a climate fit for life.**