



Printed on 100% post consumer waste (PCW) fiber manufactured using wind power.

interface.com

United States Headquarters

1280 West Peachtree Street NW
Atlanta, GA 30309
1.800.634.6032

Canadian Headquarters

233 Lahr Drive
Belleville, ON K8N 5S2
1.800.267.2149 ext. 52128

Latin American Headquarters

Montes Urales # 415 Piso 6
Lomas de Chapultepec
Miguel Hidalgo, CDMX
11000 Mexico
+ 52.55.2791.6812

CIM# IFS00916 11/2022



Climate change is undeniable. And reversible. Our mission is to prove it. Join the #ClimateTakeBack and help create a climate fit for life.

HiFi Collection

Dynamic Duo
Mirror Mirror
Peas in a Pod
Perfect Pair
Stunt Double
Two to Tango

Interface®



HiFi™ Collection

Plush. Purposeful. Practical.
Experience the elevated versatility of HiFi.

A successful reproduction bears all the hallmarks of the original—beauty, depth and quality. It takes talent and a mastery of technique to do it right. The same can be said of the techniques required to engineer plush, high-end carpet without the high-end price. But we've succeeded with the HiFi™ Collection.

Both high-performance and high-style, HiFi features a nature-inspired color palette grounded in rich, earthy, soothing tones across a series of six nondirectional patterns. Designed to blend seamlessly, HiFi's patterns include Dynamic Duo™, a bold graphic, Stunt Double™, a mesmerizing abstract and Mirror Mirror™, a rich textile—as well as three beautifully subtle organic patterns, Perfect Pair™, Two to Tango™ and Peas in a Pod™.

Created with exceptional depth and texture, every piece in the HiFi Collection works together, giving you the flexibility to combine patterns, colors and other Interface product lines to curate a sophisticated look in nearly any space. Interface carpet tile has the lowest carbon footprint in the industry—before any offsets. And like all Interface products, the HiFi Collection is third-party verified carbon neutral across the full product life cycle through our Carbon Neutral Floors™ program.

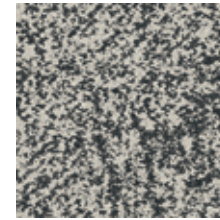
(COVER) **PRODUCT** PEAS IN A POD **COLOR** 107593 ANTIQUING **INSTALLED** NON DIRECTIONAL
PRODUCT STUNT DOUBLE **COLOR** 107647 VELLUM **INSTALLED** MONOLITHIC



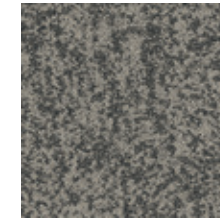




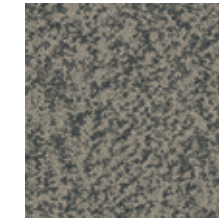
Peas in a Pod™ Colorline



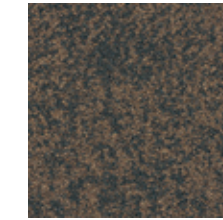
107589 MONOTYPE



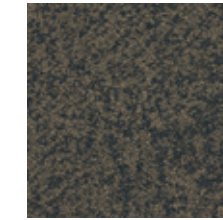
107590 SILKSCREEN



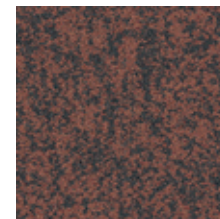
107591 VELLUM



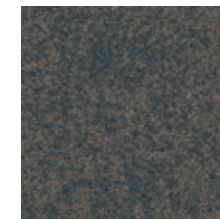
107592 METAL LEAF



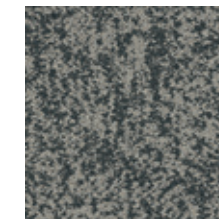
107593 ANTIQUING



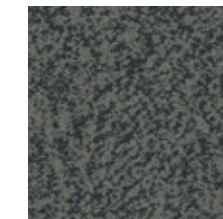
107594 RUBYLITH



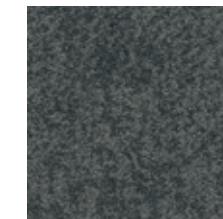
107595 WOODCUT



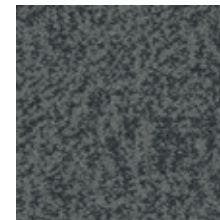
107596 DUOTONE



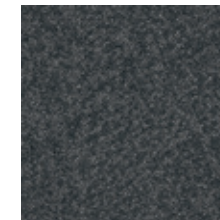
107597 ETCHING



107598 GRAYSCALE



107599 HALFTONE



107600 MEZZOTINT



107601 CYANOTYPE

Specifications

Modular, 50cm x 50cm	16794
Yarn Manufacturer	Aquafil
Yarn System	100% Recycled Content Nylon
Color System	100% Solution Dyed
Construction	Tufted Pattern Loop
Preservative Protection	Intersept®
Soil/Stain Protection	Protek2®
Pile Thickness	0.132 in., 3.3 mm
Pile Density	5,727 oz/yd ³
Total Recycled Content	Up To 84%
Indoor Air Quality	CRI Green Label Plus #GLP0820

View the full product specification on [interface.com](https://www.interface.com)

Installation Methods



ASHLAR



BRICK



MONOLITHIC



NON DIRECTIONAL

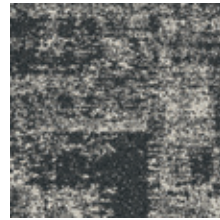


QUARTER-TURN

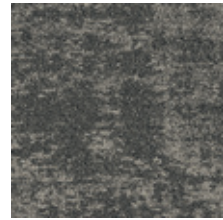


BROWSE IMAGES
ORDER SAMPLES

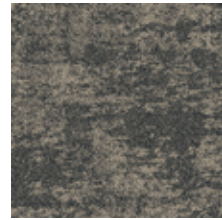
Stunt Double™ Colorline



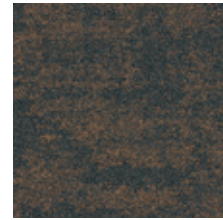
107645 MONOTYPE



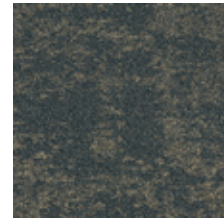
107646 SILKSCREEN



107647 VELLUM



107648 METAL LEAF



107649 ANTIQUING



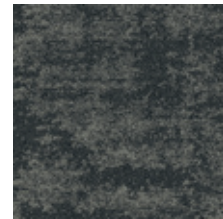
107650 RUBYLITH



107651 WOODCUT



107652 DUOTONE



107653 ETCHING



107654 GRAYSCALE



107655 HALFTONE



107656 MEZZOTINT



107657 CYANOTYPE



Specifications

Modular, 50cm x 50cm	16804
Yarn Manufacturer	Aquafil
Yarn System	100% Recycled Content Nylon
Color System	100% Solution Dyed
Construction	Tufted Pattern Loop
Preservative Protection	Intersept®
Soil/Stain Protection	Protek2®
Pile Thickness	0.116 in., 2.9 mm
Pile Density	7,138 oz/yd³
Total Recycled Content	Up To 84%
Indoor Air Quality	CRI Green Label Plus #GLP0820

View the full product specification on [interface.com](https://www.interface.com)

Installation Methods



ASHLAR



BRICK



MONOLITHIC



NON DIRECTIONAL



QUARTER-TURN

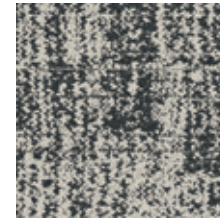


BROWSE IMAGES
ORDER SAMPLES

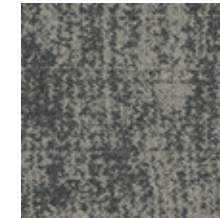
PRODUCT STUNT DOUBLE · COLORS 107647 VELLUM, 107650 RUBYLITH · INSTALLED MONOLITHIC



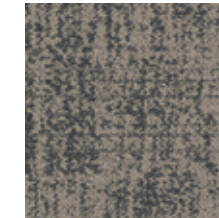
Perfect Pair™ Colorline



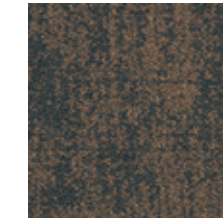
107575 MONOTYPE



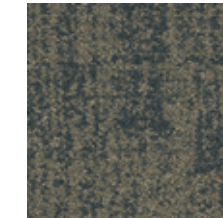
107576 SILKSCREEN



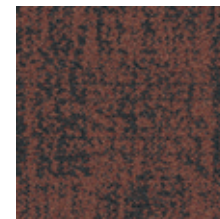
107577 VELLUM



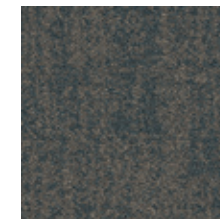
107578 METAL LEAF



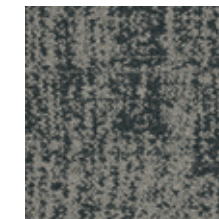
107579 ANTIQUING



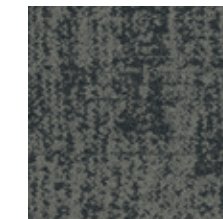
107580 RUBYLITH



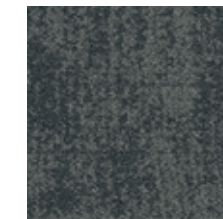
107581 WOODCUT



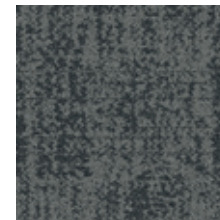
107582 DUOTONE



107583 ETCHING



107584 GRAYSCALE



107585 HALFTONE



107586 MEZZOTINT



107587 CYANOTYPE

Specifications

Modular, 50cm x 50cm	16793
Yarn Manufacturer	Aquafil
Yarn System	100% Recycled Content Nylon
Color System	100% Solution Dyed
Construction	Tufted Pattern Loop
Preservative Protection	Intersept®
Soil/Stain Protection	Protekt ² ®
Pile Thickness	0.153 in., 3.8 mm
Pile Density	5,176 oz/yd ³
Total Recycled Content	Up To 84%
Indoor Air Quality	CRI Green Label Plus #GLP0820

View the full product specification on [interface.com](https://www.interface.com)

Installation Methods



NON DIRECTIONAL



BROWSE IMAGES
ORDER SAMPLES

Dynamic Duo™ Colorline



107617 MONOTYPE



107618 SILKSCREEN



107619 VELLUM



107620 METAL LEAF



107621 ANTIQUING



107622 RUBYLITH



107623 WOODCUT



107624 DUOTONE



107625 ETCHING



107626 GRAYSCALE



107627 HALFTONE



107628 MEZZOTINT



107629 CYANOTYPE

Specifications

Modular, 50cm x 50cm	16801
Yarn Manufacturer	Aquafil
Yarn System	100% Recycled Content Nylon
Color System	100% Solution Dyed
Construction	Tufted Pattern Loop
Preservative Protection	Intersept®
Soil/Stain Protection	Protek ² ®
Pile Thickness	0.169 in., 4.3 mm
Pile Density	4,899 oz/yd ³
Total Recycled Content	Up To 84%
Indoor Air Quality	CRI Green Label Plus #GLP0820

View the full product specification on [interface.com](https://www.interface.com)

Installation Methods



ASHLAR



NON DIRECTIONAL



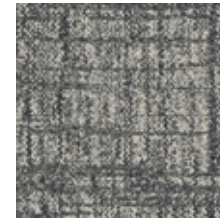
BROWSE IMAGES
ORDER SAMPLES



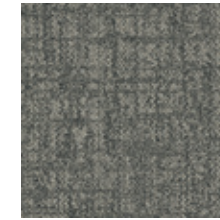
PRODUCT DYNAMIC DUO **COLORS** 107617 MONOTYPE, 107628 MEZZOTINT **INSTALLED** NON DIRECTIONAL



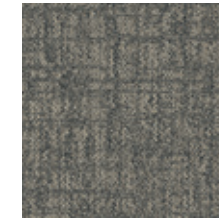
Mirror Mirror™ Colorline



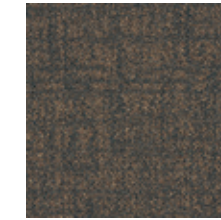
107631 MONOTYPE



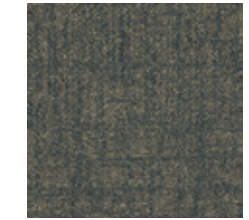
107632 SILKSCREEN



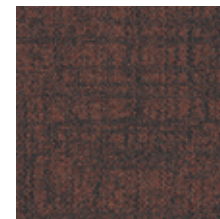
107633 VELLUM



107634 METAL LEAF



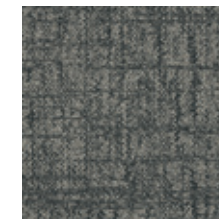
107635 ANTIQUING



107636 RUBYLITH



107637 WOODCUT



107638 DUOTONE



107639 ETCHING



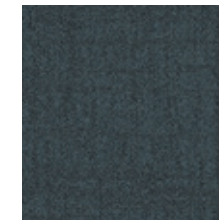
107640 GRAYSCALE



107641 HALFTONE



107642 MEZZOTINT



107643 CYANOTYPE

Specifications

Modular, 50cm x 50cm	16803
Yarn Manufacturer	Aquafil
Yarn System	100% Recycled Content Nylon
Color System	100% Solution Dyed
Construction	Tufted Pattern Loop
Preservative Protection	Intersept®
Soil/Stain Protection	Protek2®
Pile Thickness	0.145 in., 3.6 mm
Pile Density	5,462 oz/yd ³
Total Recycled Content	Up To 84%
Indoor Air Quality	CRI Green Label Plus #GLP0820

View the full product specification on [interface.com](https://www.interface.com)

Installation Methods



ASHLAR



BRICK



MONOLITHIC



NON DIRECTIONAL

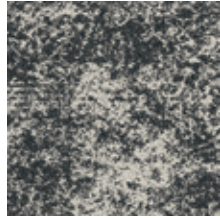


QUARTER-TURN

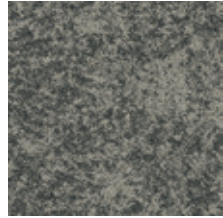


BROWSE IMAGES
ORDER SAMPLES

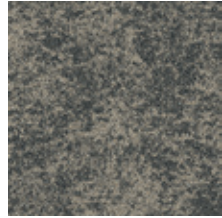
Two to Tango™ Colorline



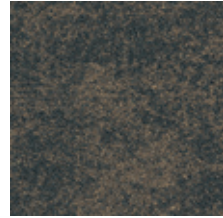
107603 MONOTYPE



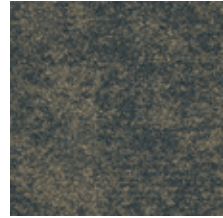
107604 SILKSCREEN



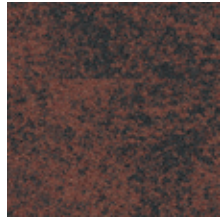
107605 VELLUM



107606 METAL LEAF



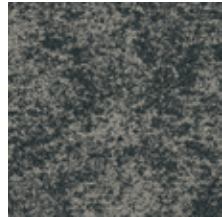
107607 ANTIQUING



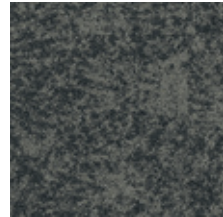
107608 RUBYLITH



107609 WOODCUT



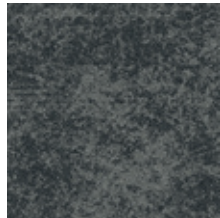
107610 DUOTONE



107611 ETCHING



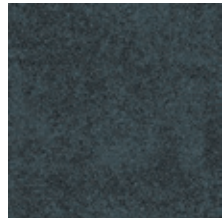
107612 GRAYSCALE



107613 HALFTONE



107614 MEZZOTINT



107615 CYANOTYPE

Specifications

Modular, 50cm x 50cm	16800
Yarn Manufacturer	Aquafil
Yarn System	100% Recycled Content Nylon
Color System	100% Solution Dyed
Construction	Tufted Pattern Loop
Preservative Protection	Intersept®
Soil/Stain Protection	Protekt ² ®
Pile Thickness	0.135 in., 3.4 mm
Pile Density	5,600 oz/yd ²
Total Recycled Content	Up To 84%
Indoor Air Quality	CRI Green Label Plus #GLP0820

View the full product specification on [interface.com](https://www.interface.com)

Installation Methods



ASHLAR



BRICK



MONOLITHIC



NON DIRECTIONAL



QUARTER-TURN



BROWSE IMAGES
ORDER SAMPLES

PRODUCT TWO TO TANGO COLORS 107604 SILKSCREEN, 107607 ANTIQUING, 107609 WOODCUT **INSTALLED NON DIRECTIONAL**



Why Our Modular Flooring?



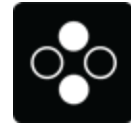
Modular Flooring

Performance and flexibility. Interface's standard backing systems set the industry standard for modular performance. Tiles stay on the floor with no upcurl, no tapping and no rippling effect, yet are easy to selectively replace. Our modular carpet is easier to handle than bulky roll carpet and produces an average of just 3-4% waste compared to roll carpet's average of 14%. And it installs seamlessly with our LVT, no transition strips needed.



TacTiles™

No glue installation. Our revolutionary TacTiles installation system eliminates the need for glue, adhering tiles securely together to form a floor that "floats" for greater flexibility, easier replacement and long-term performance. The result? Less mess, less waste and virtually no VOCs, not to mention an environmental footprint that is over 90% lower than that of traditional glue adhesives. TacTiles are approved for use on GlasBac™, CQuest™GB, Graphlar™ and Graphlex™.



Intersept®

Mold protection. Our proprietary preservative, Intersept, protects our modular carpet against mold growth and odor-causing bacteria—guaranteed. Intersept treated carpet, with proper maintenance, shows no mold or bacterial growth when tested per the ASTM E2471 Standard Test Method. Intersept is EPA approved for safe use in carpet, water insoluble and contains no halogens, heavy metals, phenols or formaldehyde. Intersept is standard in Interface carpet tile products backed with GlasBac, CQuestGB, ReadyBac™ and CushionBac Renew™.



ReEntry™

Recyclable. Through our ReEntry program, we reclaim all Interface carpet tile. The result? Carpet tile products with up to 85% total recycled content, including as much as 25% post-consumer content.



Sustainability Transparency

Transparency and certified sustainability leadership come standard on Interface products. We enlist outside partners to help us evaluate the entire product lifecycle and reduce the environmental and human health impact of our flooring. And, carpet products made in our US facilities are made with 99% renewable energy.



Help Lower Your Carbon Footprint

Like all the flooring products we sell, Interface carpet tile is carbon neutral across its full product life cycle through our third party verified Carbon Neutral Floors™ program. To find out more, visit interface.com/carbonneutral



Environmental Product Declaration (EPD) –

A statement of product ingredients and environmental impacts over the entire life cycle of a product. A comprehensive life cycle assessment (LCA) is performed to ISO standards to develop an EPD, after which both the EPD and LCA must be third party verified.



Health Product Declaration (HPD) –

A transparency tool for evaluating whether a product supports Green Chemistry. As part of our work on Health and Materials, Interface continuously reduces the environmental and health impacts of our products through elimination of materials of concern.



CRI Green Label Plus – An independent testing program that identifies carpet and adhesives with very low emissions of VOCs to help improve indoor air quality.



NSF 140 Sustainable Carpet Assessment – The only carpet sustainability standard in North America that evaluates the environmental impact of carpet for its entire lifecycle.

📍 Samples

Register and order samples at interface.com. Not near a computer? You can also request samples by calling one of the numbers below.

United States 1.877.605.1500
Canada 1.866.398.3192

Brazil + 5511.2196.0900
Latin America + 52.55.2791.6812

interface.com

Do more on interface.com

- Browse products and order samples
- Save and share favorites
- See images of products in a variety of room scenes
- Browse floor designs, change colors, upload your own image, download and share
- Get full specifications, sustainability certifications and more
- Check order status and inventory availability
- Sign up to get the latest information on Interface products and news

InterCircle Sample Return

Help us close the loop on the carpet sampling process. Through our InterCircle Sample Return program, sample materials stay out of the landfill and are re-used as samples until it is time to recycle them into new carpet. By reducing sample production material and diverting old materials from the landfill, we can reduce our overall environmental footprint.

Call 1.877.605.1500 (U.S.) or 1.866.398.3192 (Canada) to order a sample return bag with a prepaid return label.

We have tried our very best to accurately represent product colors. However, due to the nature of printed materials, color of actual products may vary slightly. Please request a sample to see actual product color.

All product specifications reflect averages derived from product sample testing, are subject to normal manufacturing and testing tolerances and inherent pattern variances, and may be changed without notice. For more information about these and other important attributes of the product(s) described herein, including recycled content and product warranty information, please see interface.com/disclaimer.