



Etched Earth
Collection

EE710 - EE715

Interface®

Etched Earth™ Collection

Explore more with Etched Earth™.

Featuring dimensional texture and large-scale patterns, this carpet tile collection adds beauty, comfort, and warmth to every floorscape. This collection offers highly textured, timeless styles that take inspiration from calming patterns and forms found in nature. Etched Earth provides a range of scale and pattern including a dramatic end-grain look and tapestry-inspired options. Its seamless application and sophisticated design make the collection a perfect fit to help anchor spaces via an area rug install or add dimension to larger, high-profile spaces.

The collection is made for purpose. Featuring colorways and textures designed to complement the Etched & Threaded™ collection, Etched Earth helps create a variety of solutions for any environment. And with a low-carbon footprint and superior performance benefits, it hits the highest marks for innovation, design, and climate progress.

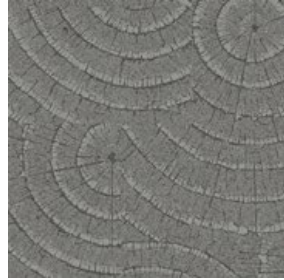




EE710 Color Range



103425 BASALT



103426 GLACIER



103427 PEAT



103428 STONE



103429 STRATA



103430 FOSSIL



103431 EARTH



103432 CLAY

Specifications

Modular, 1 m x 1 m	12584
Yarn Manufacturer	Aquafil
Yarn System	100% Recycled Content Nylon
Dye Method	100% Solution Dyed
Construction	Engaged Tufted Pattern Loop
Preservative Protection	Intersept®
Soil/Stain Protection	Protek ² ™
Pile Thickness	0.131 in, 3.3 mm
Pile Density	8,244 oz/yd ³
Total Recycled Content	72%
Indoor Air Quality	CRI Green Label Plus #GLP0820

View the full product specification on [interface.com](https://www.interface.com)

Installation Method



MONOLITHIC



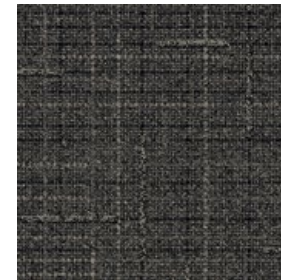
BROWSE IMAGES
ORDER SAMPLES



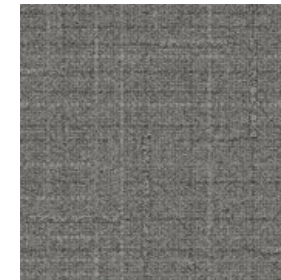
PRODUCT EE710 COLOR GLACIER INSTALLED MONOLITHIC



EE711 Color Range



103457 BASALT



103458 GLACIER



103459 PEAT



103460 STONE



103461 STRATA



103462 FOSSIL



103463 EARTH



103464 CLAY

Specifications

Modular, 50 cm x 50 cm	12585
Yarn Manufacturer	Aquafil
Yarn System	100% Recycled Content Nylon
Dye Method	100% Solution Dyed
Construction	Engaged Tufted Pattern Loop
Preservative Protection	Intersept®
Soil/Stain Protection	Protek ² ™
Pile Thickness	0.088 in, 2.2 mm
Pile Density	11,045 oz/yd ³
Total Recycled Content	71%
Indoor Air Quality	CRI Green Label Plus #GLP0820

View the full product specification on [interface.com](https://www.interface.com)

Installation Method



MONOLITHIC

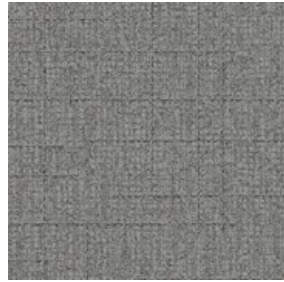


BROWSE IMAGES
ORDER SAMPLES

EE712 Color Range



103449 BASALT



103450 GLACIER



103451 PEAT



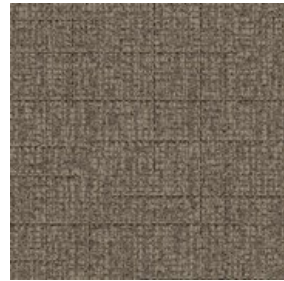
103452 STONE



103453 STRATA



103454 FOSSIL



103455 EARTH



103456 CLAY



Specifications

Modular, 50 cm x 50 cm	12588
Yarn Manufacturer	Aquafil
Yarn System	100% Recycled Content Nylon
Dye Method	100% Solution Dyed
Construction	Engaged Tufted Pattern Loop
Preservative Protection	Intersept®
Soil/Stain Protection	Protek ² ™
Pile Thickness	0.086 in, 2.2 mm
Pile Density	11,721 oz/yd ³
Total Recycled Content	71%
Indoor Air Quality	CRI Green Label Plus #GLP0820

View the full product specification on [interface.com](https://www.interface.com)

Installation Method



MONOLITHIC

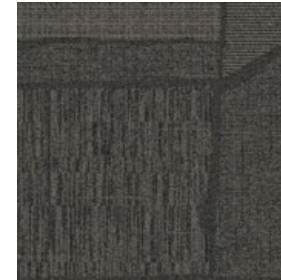


BROWSE IMAGES
ORDER SAMPLES

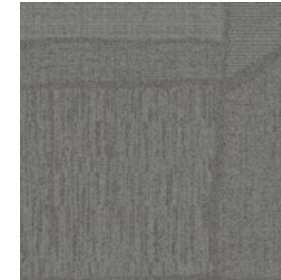
PRODUCT EE712 COLOR STONE INSTALLED MONOLITHIC



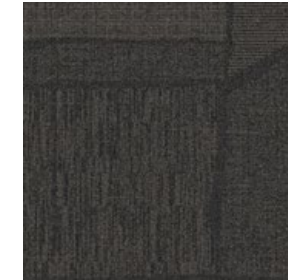
EE713 Color Range



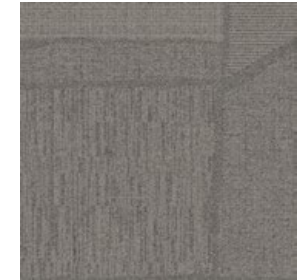
103417 BASALT



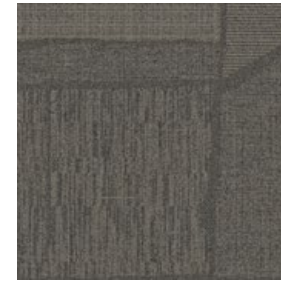
103418 GLACIER



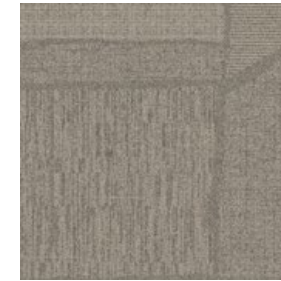
103419 PEAT



103420 STONE



103421 STRATA



103422 FOSSIL



103423 EARTH



103424 CLAY

Specifications

Modular, 1 m x 1 m	12583
Yarn Manufacturer	Aquafil
Yarn System	100% Recycled Content Nylon
Dye Method	100% Solution Dyed
Construction	Tufted Pattern Loop
Preservative Protection	Intersept®
Soil/Stain Protection	Protekt ² ™
Pile Thickness	0.148 in, 3.8 mm
Pile Density	6,081 oz/yd ³
Total Recycled Content	71%
Indoor Air Quality	CRI Green Label Plus #GLP0820

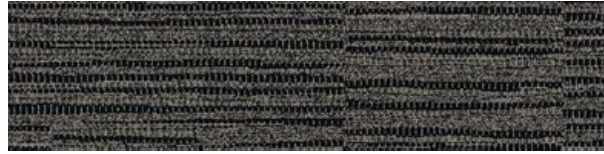
Installation Method



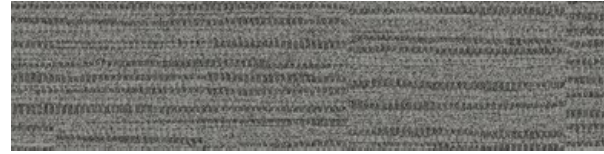
QUARTER-TURN



EE714 Color Range



103441 BASALT



103442 GLACIER



103443 PEAT



103444 STONE



103445 STRATA



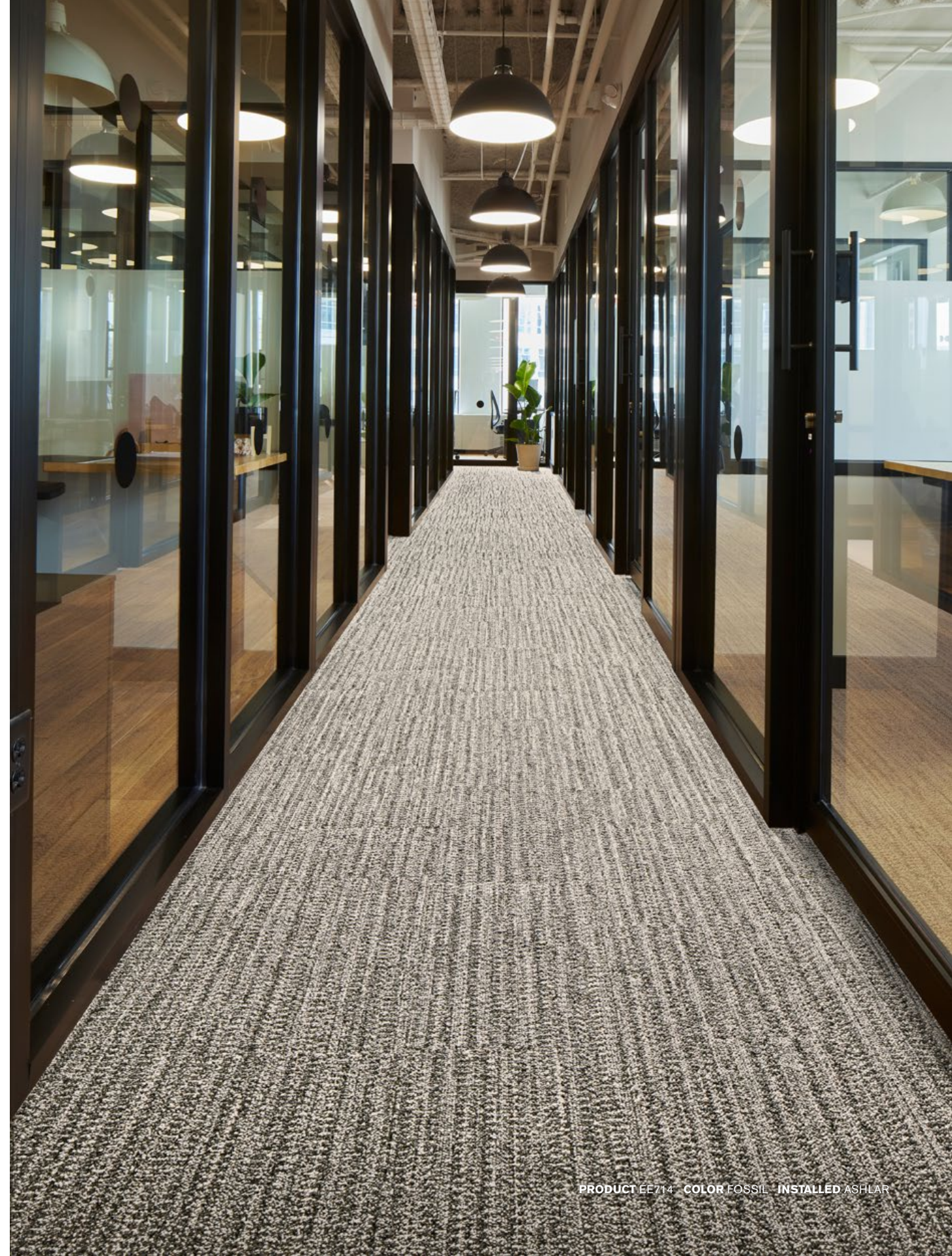
103446 FOSSIL



103447 EARTH



103448 CLAY



Specifications

Modular, 25 cm x 1 m	12587
Yarn Manufacturer	Aquafil
Yarn System	100% Recycled Content Nylon
Dye Method	100% Solution Dyed
Construction	Engaged Tufted Pattern Loop
Preservative Protection	Intersept®
Soil/Stain Protection	Protek ² ™
Pile Thickness	0.115 in, 2.9 mm
Pile Density	8,452 oz/yd ³
Total Recycled Content	71%
Indoor Air Quality	CRI Green Label Plus #GLP0820

[View the full product specification on interface.com](#)

Installation Methods



ASHLAR



HERRINGBONE



BROWSE IMAGES
ORDER SAMPLES

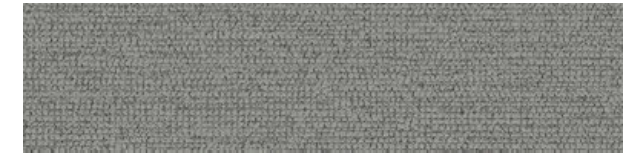
PRODUCT EE714 COLOR FOSSIL INSTALLED ASHLAR



EE715 Color Range



103433 BASALT



103434 GLACIER



103435 PEAT



103436 STONE



103437 STRATA



103438 FOSSIL



103439 EARTH



103440 CLAY

Specifications

Modular, 25 cm x 1 m	12586
Yarn Manufacturer	Aquafil
Yarn System	100% Recycled Content Nylon
Dye Method	100% Solution Dyed
Construction	Engaged Tufted Pattern Loop
Preservative Protection	Intersept®
Soil/Stain Protection	Protek ⁴² ™
Pile Thickness	0.056 in, 1.4 mm
Pile Density	14,785 oz/yd ³
Total Recycled Content	70%
Indoor Air Quality	CRI Green Label Plus #GLP0820

[View the full product specification on interface.com](#)

Installation Methods



ASHLAR



HERRINGBONE

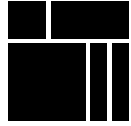


BROWSE IMAGES
ORDER SAMPLES



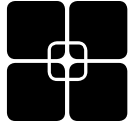


Why Our Modular Flooring?



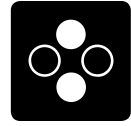
Modular Flooring

Performance and flexibility. Interface's standard backing systems set the industry standard for modular performance. Tiles stay on the floor with no upcurl, no taping and no rippling effect, yet are easy to selectively replace. Our modular carpet is easier to handle than bulky roll carpet and produces an average of just 3-4% waste compared to roll carpet's average of 14%. And it installs seamlessly with our LVT, no transition strips needed.



TacTiles™

No glue installation. Our revolutionary TacTiles installation system eliminates the need for glue, adhering tiles securely together to form a floor that “floats” for greater flexibility, easier replacement and long-term performance. The result? Less mess, less waste and virtually no VOCs, not to mention an environmental footprint that is over 90% lower than that of traditional glue adhesives. TacTiles are approved for use on GlasBac™, CQuest™GB, CQuest™Bio and CQuest™BioX.



Intersept®

Mold protection. Our proprietary preservative, Intersept, protects our modular carpet against mold growth and odor-causing bacteria—guaranteed. Intersept treated carpet, with proper maintenance, shows no mold or bacterial growth when tested per the ASTM E2471 Standard Test Method. Intersept is EPA approved for safe use in carpet, water insoluble and contains no halogens, heavy metals, phenols or formaldehyde. Intersept is standard in Interface carpet tile products backed with GlasBac, CQuestGB, ReadyBac™ and CushionBac Renew™.



Environmental Product Declaration (EPD)

A statement of product ingredients and environmental impacts over the entire life cycle of a product. A comprehensive life cycle assessment (LCA) is performed to ISO standards to develop an EPD, after which both the EPD and LCA must be third party verified.



Health Product Declaration (HPD)

A transparency tool for evaluating whether a product supports Green Chemistry. As part of our work on Health and Materials, Interface continuously reduces the environmental and health impacts of our products through elimination of materials of concern.



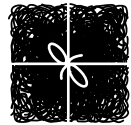
CRI Green Label Plus

An independent testing program that identifies carpet and adhesives with very low emissions of VOCs to help improve indoor air quality.



NSF 140 Sustainable Carpet Assessment

The only carpet sustainability standard in North America that evaluates the environmental impact of carpet for its entire life cycle.



ReEntry™

Recyclable. Through our ReEntry program we reclaim and recycle our carpet tile and Sound Choice™ LVT. ReEntry is the only third party certified recycling system among North American flooring manufacturers.



Sustainability Transparency

Transparency and certified sustainability leadership come standard on Interface products. We enlist outside partners to help us evaluate the entire product life cycle and reduce the environmental and human health impact of our flooring. And, carpet products made in our US facilities are made with 99% renewable energy.

📍 Samples

Register and order samples at [interface.com](https://www.interface.com). Not near a computer? You can also request samples by calling one of the numbers below.

United States
1.877.605.1500

Canada
1.866.398.3192

[interface.com](https://www.interface.com)

- Do more on [interface.com](https://www.interface.com)
- Browse products and order samples
- Save and share favorites
- See images of products in a variety of room scenes
- Browse floor designs, change colors, upload your own image, download and share
- Get full specifications, sustainability certifications and more
- Check order status and inventory availability
- Sign up to get the latest information on Interface products and news

InterCircle Sample Return

Help us close the loop on the carpet sampling process. Through our InterCircle Sample Return program, sample materials stay out of the landfill and are re-used as samples until it is time to recycle them into new carpet. By reducing sample production material and diverting old materials from the landfill, we can reduce our overall environmental footprint.

Call 1.877.605.1500 (U.S.) or 1.866.398.3192 (Canada) to order a sample return bag with a prepaid return label.

We have tried our very best to accurately represent product colors. However, due to the nature of printed materials, color of actual products may vary slightly. Please request a sample to see actual product color.

All product specifications reflect averages derived from product sample testing, are subject to normal manufacturing and testing tolerances and inherent pattern variances, and may be changed without notice. For more information about these and other important attributes of the product(s) described herein, including recycled content and product warranty information, please see [interface.com/disclaimer](https://www.interface.com/disclaimer).



PLEASE RECYCLE

Printed on 50% post consumer waste (PCW) fiber manufactured using wind power.

interface.com

United States Headquarters

1280 West Peachtree Street NW
Atlanta, GA 30309
1.800.634.6032

Canadian Headquarters

233 Lahr Drive
Belleville, ON K8N 5S2
1.800.267.2149 ext. 52128

CIM# IFS00960 09/2024



Climate change is undeniable. And reversible. Our mission is to prove it.
Join the #ClimateTakeBack and help create a climate fit for life.