



Etched & Threaded Collection

Exclusively for Interface
by David Oakey Designs

E610 - E616

Interface[®]

Etched & Threaded Collection

Made to zone-in or zen-out.

Need to focus your mind, or just let it wander? Meet Etched & Threaded, designed to bring a bit more zen to your spaces.

By weaving the warmth of luxury textiles with the geometric flow of natural stone – Etched & Threaded cuts through the hustle and bustle to create relaxing spaces you can truly sink into; with carpet tiles packed full of sustainable thinking and made to last.

From bustling breakouts to the boardroom – mix and match organic and woven patterns – available in a range of subtle colourways and modular tile shapes – to create the spaces that help you zone in or find your 'zen'.





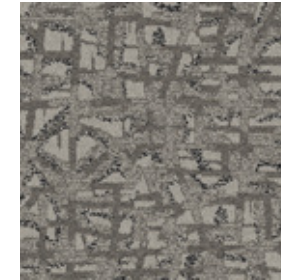


PRODUCT E610 COLOUR FELDSPAR INSTALLED MONOLITHIC

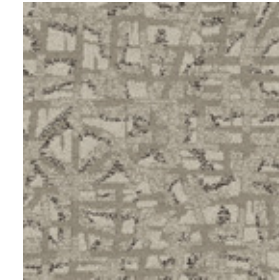
E610 Colour Range



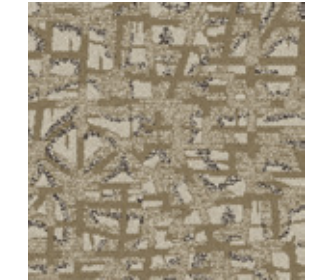
600Q001 SLATE



600Q002 FELDSPAR



600Q003 SANDSTONE



600Q004 YELLOWSTONE

Specifications

Style Code	600Q
Product Construction	Tapestry Tufted Patterned Structured Loop Pile
Yarn System	100% Recycled Solution Dyed Nylon
Machine Gauge	1/10
Pile Thickness	6.5mm (± 0.5mm) (Asia) 7.0mm (± 0.5mm) (Australia & New Zealand)
Total Thickness	11.0mm (± 0.5mm) (Asia) 11.0mm (± 0.5mm) (Australia & New Zealand)
Tile Size	50 x 50 cm
Area of Use	Commercial Heavy Use
ACCS Grading (Australia & New Zealand Only)	Commercial Extra Heavy Duty & Stairs
Lifetime Antimicrobial	Intersept®
Soil / Stain Protection	Protekt ² ®

View the full product specification on [interface.com](https://www.interface.com)

Installation Methods

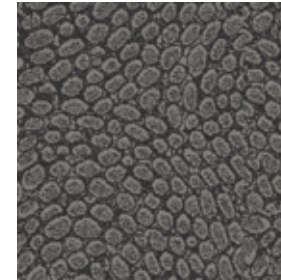


MONOLITHIC

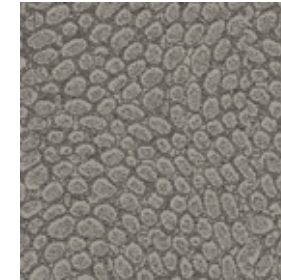


PRODUCT E611 COLOUR GRANITE INSTALLED MONOLITHIC

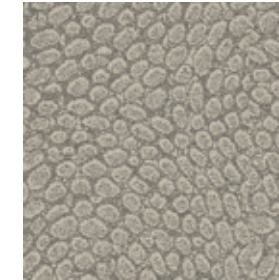
E611 Colour Range



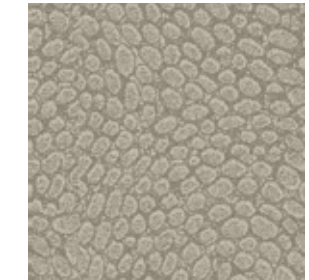
600R001 GRANITE



600R002 QUARTZ



600R003 MARBLE



600R004 LIMESTONE

Specifications

Style Code	600R
Product Construction	Tapestry Tufted Patterned Structured Loop Pile
Yarn System	100% Recycled Solution Dyed Nylon
Machine Gauge	1/10
Pile Thickness	5.4mm (\pm 0.5mm) (Asia) 5.0mm (\pm 0.5mm) (Australia & New Zealand)
Total Thickness	9.0mm (\pm 0.5mm) (Asia) 9.0mm (\pm 0.5mm) (Australia & New Zealand)
Tile Size	50 x 50 cm
Area of Use	Commercial Heavy Use
ACCS Grading	Commercial Extra Heavy Duty & Stairs
(Australia & New Zealand Only)	
Lifetime Antimicrobial	Intersept®
Soil / Stain Protection	Protekt ² ®

View the full product specification on interface.com

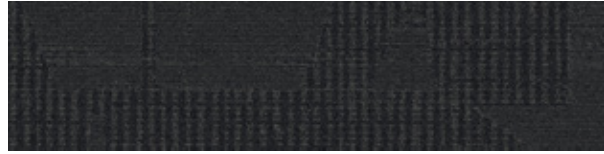
Installation Methods



MONOLITHIC



E612 Colour Range



600S001 UMBER



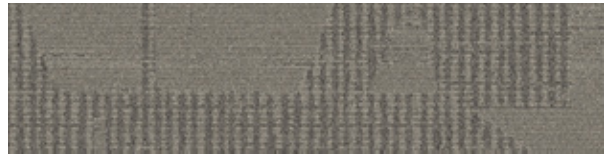
600S002 MINERAL



600S003 FLANNEL



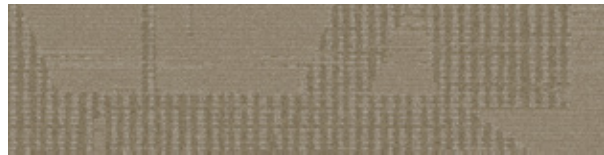
600S004 FOG



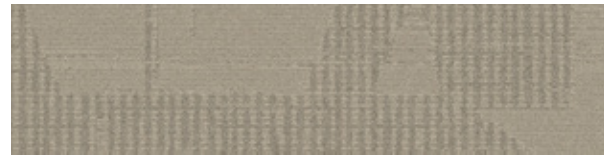
600S005 DUSK



600S006 SEPIA



600S007 STRAW



600S008 WHEAT

Specifications

Style Code	600S
Product Construction	Tufted Patterned Structured Tip Sheared Pile
Yarn System	100% Recycled Solution Dyed Nylon
Machine Gauge	1/10
Pile Thickness	5.4mm (± 0.5mm) (Asia) 5.0mm (± 0.5mm) (Australia & New Zealand)
Total Thickness	8.2mm (± 0.5mm) (Asia) 8.0mm (± 0.5mm) (Australia & New Zealand)
Tile Size	25 x 100 cm
Area of Use	Commercial Heavy Use
ACCS Grading (Australia & New Zealand Only)	Commercial Extra Heavy Duty & Stair
Lifetime Antimicrobial	Intersept®
Soil / Stain Protection	Protekt ² ®

View the full product specification on [interface.com](https://www.interface.com)

Installation Methods



PRODUCT E612 COLOUR STRAW INSTALLED ASHLAR

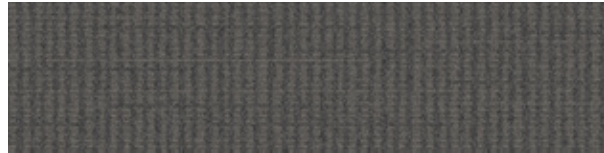
E613 Colour Range



600T001 UMBER



600T002 MINERAL



600T003 FLANNEL



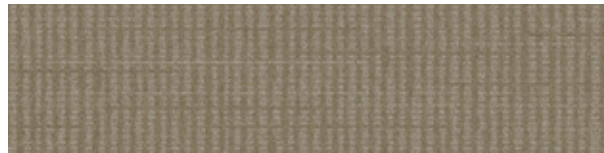
600T004 FOG



600T005 DUSK



600T006 SEPIA



600T007 STRAW



600T008 WHEAT

Specifications

Style Code	600T
Product Construction	Tufted Patterned Structured Loop Pile
Yarn System	100% Recycled Solution Dyed Nylon
Machine Gauge	1/10
Pile Thickness	4.8mm (± 0.5mm) (Asia) 4.5mm (± 0.5mm) (Australia & New Zealand)
Total Thickness	7.8mm (± 0.5mm) (Asia) 7.5mm (± 0.5mm) (Australia & New Zealand)
Tile Size	25 x 100 cm
Area of Use	Commercial Heavy Use
ACCS Grading (Australia & New Zealand Only)	Commercial Extra Heavy Duty & Stairs
Lifetime Antimicrobial	Intersept®
Soil / Stain Protection	Protekt ² ®

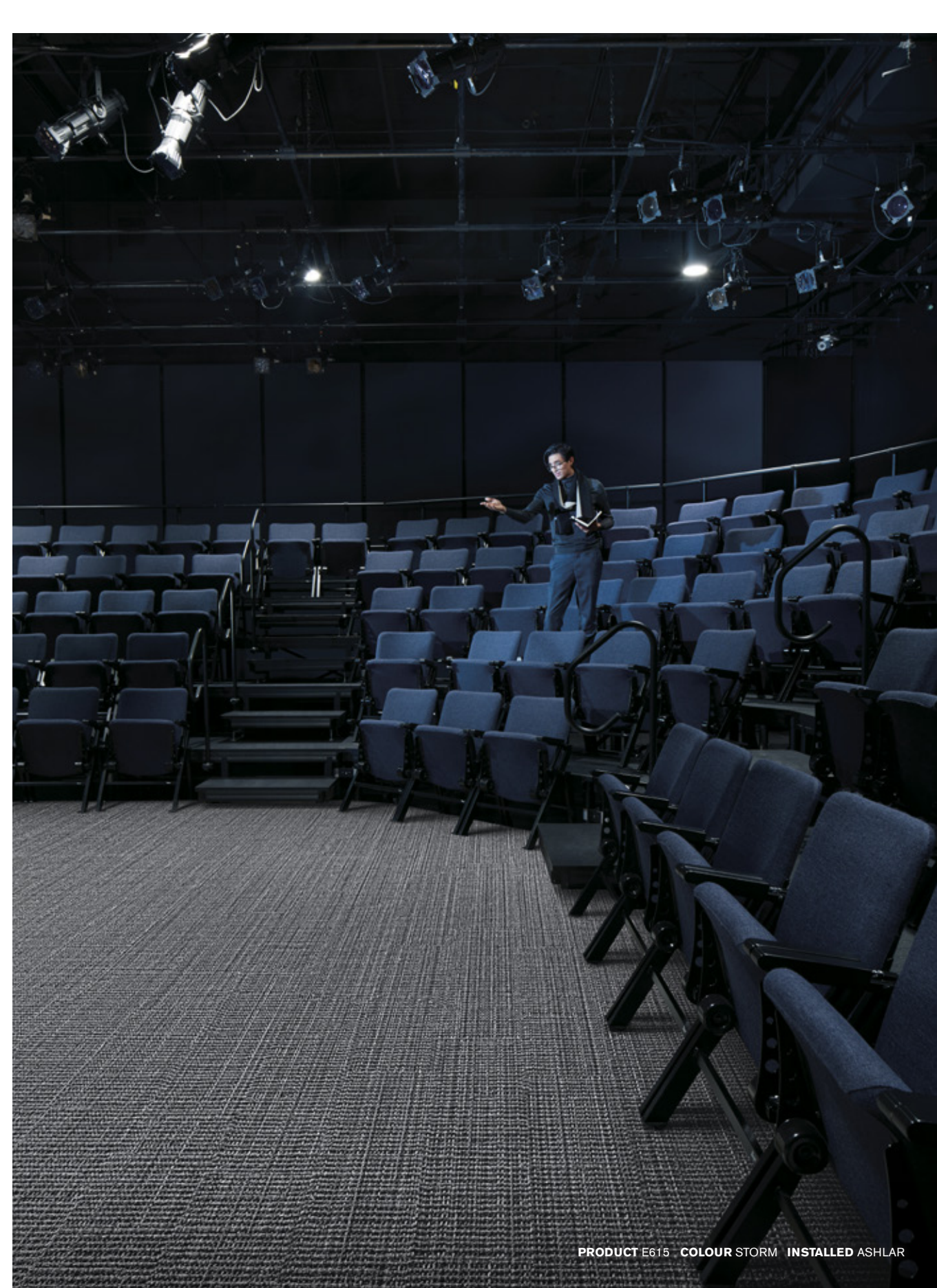
View the full product specification on [interface.com](https://www.interface.com)

Installation Methods





PRODUCT E616 COLOUR PLATINUM & PEWTER INSTALLED ASHLAR



PRODUCT E615 COLOUR STORM INSTALLED ASHLAR

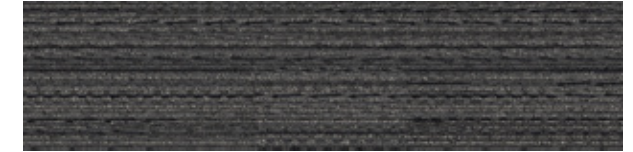


PRODUCT E614 COLOUR BARK INSTALLED ASHLAR

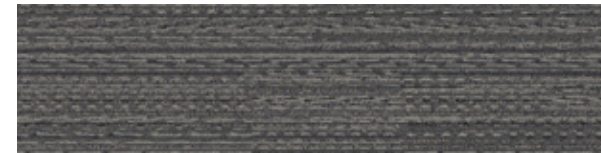
E614 Colour Range



600U001 BARK



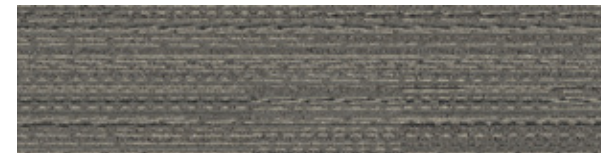
600U002 CHARCOAL



600U003 STORM



600U004 CONCRETE



600U005 BIRCH



600U006 BROWNSTONE



600U007 RAFFIA



600U008 LINEN

Specifications

Style Code	600U
Product Construction	Tufted Patterned Structured Loop Pile
Yarn System	100% Recycled Solution Dyed Nylon
Machine Gauge	1 / 10
Pile Thickness	5.7mm (± 0.5mm) (Asia) 5.0mm (± 0.5mm) (Australia & New Zealand)
Total Thickness	8.8mm (± 0.5mm) (Asia) 8.0mm (± 0.5mm) (Australia & New Zealand)
Tile Size	25 x 100 cm
Area of Use	Commercial Heavy Use
ACCS Grading	Commercial Extra Heavy Duty & Stairs
(Australia & New Zealand Only)	
Lifetime Antimicrobial	Intersept®
Soil / Stain Protection	Protekt ² ®

View the full product specification on [interface.com](https://www.interface.com)

Installation Methods



ASHLAR



HERRINGBONE

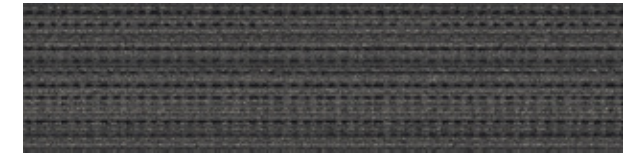


PRODUCT E615 COLOUR BROWNSTONE INSTALLED ASHLAR

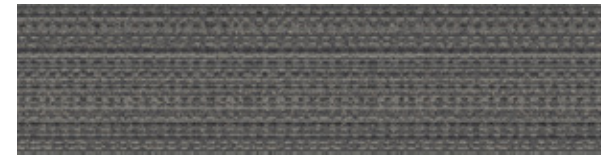
E615 Colour Range



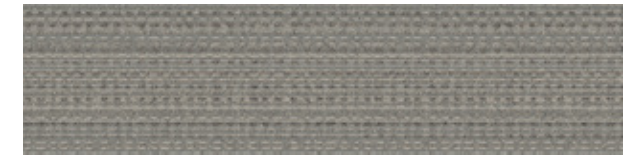
600V001 BARK



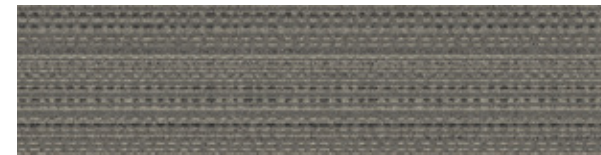
600V002 CHARCOAL



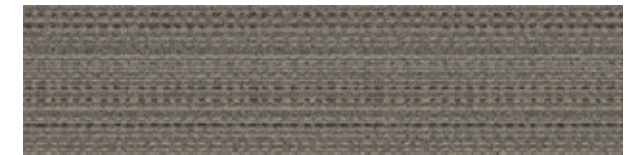
600V003 STORM



600V004 CONCRETE



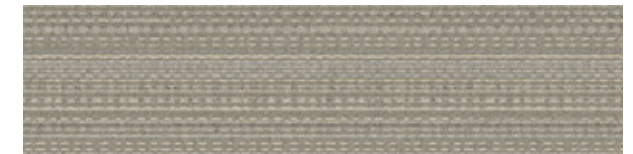
600V005 BIRCH



600V006 BROWNSTONE



600V007 RAFFIA



600V008 LINEN

Specifications

Style Code	600V
Product Construction	Tufted Patterned Structured Loop Pile
Yarn System	100% Recycled Solution Dyed Nylon
Machine Gauge	1 / 10
Pile Thickness	4.5mm (± 0.5mm) (Asia) 4.5mm (± 0.5mm) (Australia & New Zealand)
Total Thickness	8.5mm (± 0.5mm) (Asia) 7.5mm (± 0.5mm) (Australia & New Zealand)
Tile Size	25 x 100 cm
Area of Use	Commercial Heavy Use
ACCS Grading (Australia & New Zealand Only)	Commercial Extra Heavy Duty & Stairs
Lifetime Antimicrobial	Intersept®
Soil / Stain Protection	Protekt ² ®

View the full product specification on [interface.com](https://www.interface.com)

Installation Methods



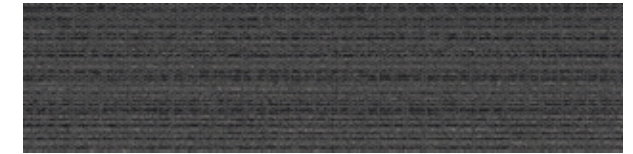


PRODUCT E616 COLOUR JUTE PRODUCT E614 COLOUR RAFFIA
 INSTALLED ASHLAR

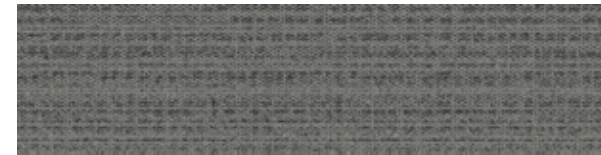
E616 Colour Range



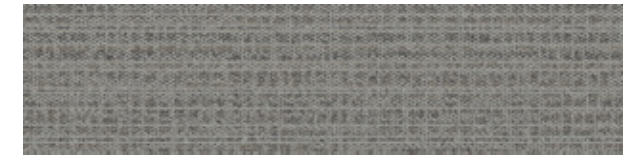
600W001 WALNUT



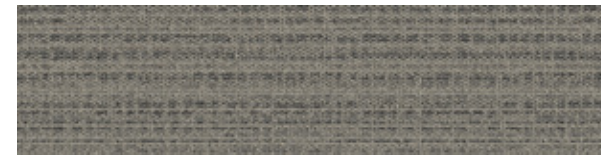
600W002 IRON



600W003 PEWTER



600W004 PLATINUM



600W005 TIMBER



600W006 WINTER



600W007 JUTE



600W008 PARCHMENT

Specifications

Style Code	600W
Product Construction	Tufted Patterned Structured Loop Pile
Yarn System	100% Recycled Solution Dyed Nylon
Machine Gauge	1/12
Pile Thickness	3.5mm (± 0.5mm) (Asia) 3.0mm (± 0.5mm) (Australia & New Zealand)
Total Thickness	6.5mm (± 0.5mm) (Asia) 6.0mm (± 0.5mm) (Australia & New Zealand)
Tile Size	25 x 100 cm
Area of Use	Commercial Heavy Use
ACCS Grading	Commercial Heavy Duty & Stairs
(Australia & New Zealand Only)	
Lifetime Antimicrobial	Intersept®
Soil / Stain Protection	Protekt ² ®

View the full product specification on [interface.com](https://www.interface.com)

Installation Methods



ASHLAR



HERRINGBONE



1- Reception

- Lab/Diagnostics

- Cafe

2- Intensive Care Unit

3- Outpatient Surgery

4- Family Medicine

Why Our Modular Flooring?



Modular Flooring

Performance and flexibility. Interface's standard backing systems set the industry standard for modular performance. Tiles stay on the floor with no upcurl, no tapping and no rippling effect, yet are easy to selectively replace. Our modular carpet is easier to handle than bulky roll carpet and produces an average of just 2-5% waste compared to roll carpet's average of 15%. And it installs seamlessly with our LVT, no transition strips needed.



ReEntry

At Interface, an *end of life solution* of our products is a reality. ReEntry is our innovative programme to reclaim materials used in our product. Taking back our product at end of life is a service we provide our customers to ensure that none of the products they use will end up in landfill. Whether it is recycling into new product or re-purposing, we see our customer's waste as an opportunity for new product life.



TacTiles®

No glue installation. Our revolutionary TacTiles installation system eliminates the need for glue, adhering tiles securely together to form a floor that "floats" for greater flexibility, easier replacement and long-term performance. The result? Less mess, less waste and virtually no VOCs, not to mention an environmental footprint that is over 90% lower than that of traditional glue adhesives.



Intersept®

Mold protection. Our proprietary preservative, Intersept, protects our modular carpet against mould growth and odour-causing bacteria—guaranteed. Intersept treated carpet, with proper maintenance, shows no mould or bacterial growth when tested as per the ASTM E2471 Standard Test Method. Intersept is EPA-approved for safe use in carpet, water insoluble and contains no halogens, heavy metals, phenols or formaldehyde.



Protekt2®

Stain protection. The life and performance of your flooring is extended with Protekt², our patented stain resistant protection. Protekt² uses advanced technology to provide a lasting barrier against permanent soiling and staining, which simplifies the cleaning process and enhances the longevity of your carpet. Protekt² is product specific, please refer to individual product specifications for details.



Health Product Declaration (HPD) –

A transparency tool for evaluating whether a product supports Green Chemistry. As part of our work on Health and Materials, Interface continuously reduces the environmental and health impacts of our products through elimination of materials of concern.



15-Year Warranty

Interface products are warranted for 15 years against excessive surface wear, edge ravel, backing separation, shrinking, stretching and static electricity even under castor chair conditions.



Local Manufacturing

We combine local responsiveness with a global experience. Being part of the same communities as our customers, we foster collaborative, committed, and productive relationships. Our carpet tiles are manufactured in Australia and China, contributing to local economies and the environment.

All Interface manufacturing facilities in the Asia Pacific region maintain registration to ISO 9001 Quality Management Systems and ISO 14001 Environmental Management Systems.

Third Party Certifications



Environmental Product Declaration (EPD)

The Environmental Product Declaration (EPD) is a third party verified environmental certification classified as Type III that quantifies and verifies the lifecycle impacts of products and goods according to the International Standards Organization (ISO) 14025, 14040, 14044 and EN 15804. EPDs help customers that are environmentally driven to evaluate the performance of a product and to make the best decision when choosing a product. Interface EPDs can be found on interface.com.



Global GreenTag GreenRate - Level A

Global GreenTag's GreenRate certification is a product rating system recognised by the Green Building Council of Australia and Green Building Council of New Zealand. Its assessment scheme aligns to the Green Star® Responsible Products program. All Interface products are certified "Level A".



Best Practice Guidelines for PVC

Our product proudly holds the Best Environmental Practice (BEP) PVC certification, a recognition of compliance with stringent environmental and social criteria in PVC manufacturing. This certification is a key contributor to Green Star certification, aligning with the GBCA's Responsible Products Framework. Our commitment to BEP guidelines demonstrates our dedication to environmental responsibility and product excellence.



Singapore Green Building Product (SGBP)

The SGBP certification is designed to evaluate and certify building products that meet specific sustainability and environmental performance criteria. The certification scheme helps building professionals identify products that are sustainable and more carbon efficient. Interface carpet tile products are certified "Leader" and LVT products are at "Excellent" Level.



NSF Certification

NSF International develops public health standards and certification programs that help protect the world's food, water, consumer products and environment. Interface carpet tile products are certified "Gold".



CRI Green Label Plus

The Carpet and Rug Institute (CRI) Green Label Plus sets higher standards for indoor air quality and ensures that customers are purchasing the very lowest emitting products on the market. Interface Carpet Tiles and TacTiles have fulfilled the requirements for this certification.

Do more on interface.com

- Browse products, save and share favourites
- See images of products in a variety of room scenes
- Browse floor designs, change colours, upload your own image, download and share
- Get full specifications, sustainability certifications and more
- Sign up to get the latest information on Interface products and news

Our EPDs and certifications contribute credits towards Green Building Council's Green Star® Responsible Products program.

Green Star is the Green Building Council of Australia's sustainability rating system for the built environment. It is used to rate new and existing buildings, new fit-outs, and new precinct developments. The Green Building Council of Australia recognises Responsible Products that may contribute to a Green Star rating through its Responsible Credits.

We have tried our very best to accurately represent product colours. However, due to the nature of printed materials, colour of actual products may vary slightly. Please request a sample to see actual product colour.

Production specifications are subject to normal manufacturing tolerances and may be changed without notice. The visibility of joints may vary based on colour and pattern. Slight variation in colour among different production lots are normal and should be considered in the overall installation plan. Products covered by manufacturer's written warranty only. All other warranties, including without limitation any implied warranties of merchantability or fitness for particular purpose, are hereby disclaimed. Contact your representative for written warranty information.

www.interface.com

Australia

Interface Australia
local toll free: 1800 804 361

India

Interface India
tel: +91 76249 17934

South East Asia

Interface Asia
tel: +65 6478 1510

South Korea

Interface South Korea
tel: +82 2 555 1734

Japan

Interface Japan
tel: +81(0)3-6892-5513

Beijing

Interface China
tel: +86 10 6590 7810

Hong Kong

Interface China
tel: +852 2802 0838

Shanghai

Interface China
tel: +86 21 6340 3868

07/2024



Climate change is undeniable. And reversible. Our mission is to prove it. Join the #ClimateTakeBack and help create a climate fit for life.