

A modern office interior featuring a large, patterned carpet in shades of grey and black. In the foreground, a long wooden conference table is surrounded by red wire mesh chairs. Large windows in the background offer a view of a city skyline, with a person walking outside. The text "Embodied Beauty Collection" is overlaid on the left side of the image.

Embodied Beauty Collection

Interface®

[-CO₂]

**Less carbon in the atmosphere.
More beauty on your floor.**

The Embodied Beauty collection is designed to help restore the health of the planet and lower the carbon footprint of your space with style. The collection features a range of beautiful carpet tile designs, including our first-ever carbon negative products in three unique styles: Shishu Stitch™, Tokyo Texture™, and Zen Stitch™. These pioneering products are created with a combination of our new CQuest™BioX backing, specialty yarns and tufting processes and are designed to create a carpet tile that stores more carbon than any before — helping you reduce the carbon footprint of your space by reducing the amount of carbon in the atmosphere.

The collection is inspired by the Japanese aesthetics of minimalism, restoration, and the organic beauty of the natural world. In addition to our three carbon negative products, you'll find calm, muted grays in warm and cool tones alongside natural colors for added dimension in Geisha Gather™, Sashiko Stitch™, Simple Sash™ and Vintage Kimono™. From narrow monochromatic patterns to large scale graphic tufted textures, all of the styles in this collection combine and contrast tastefully.

The Embodied Beauty collection lives up to its name and shows that beautiful design and sustainability are inseparable. In addition to the three cradle-to-gate carbon negative styles, as part of Interface's commitment to Climate Take Back™, all of the styles that are featured within the collection are carbon neutral across their full product life cycle.



PRODUCT SASHIKO STITCH COLOR 106619 JADEITE INSTALLED ASHLAR
PRODUCT SHISHU STITCH* COLOR 106644 ASH INSTALLED HERRINGBONE







CARPET PRODUCT SIMPLE SASH **COLOR** 106604 INDIGO **INSTALLED** ASHLAR
LVT PRODUCT WALK OF LIFE **COLOR** A01202 PUMICE **INSTALLED** MONOLITHIC

Shishu Stitch™ Colorline [-CO₂]



106641 JET



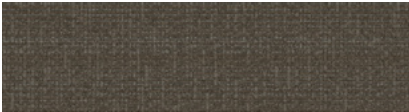
106642 SHADE



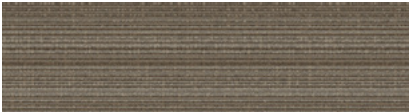
106643 INDIGO



106644 ASH



106645 TAUPE



106646 LIMESTONE

Specifications

Modular, 25cm x 1 m	137480AK0Q
Backing System	CQuest™BioX
Yarn Manufacturer	Universal
Yarn System	Post-Consumer Content Nylon
Color System	100% Solution Dye
Construction	Tufted Textured Loop
Soil/Stain Protection	Protekt ² ™
Pile Thickness	0.053 in., 1.3 m
Pile Density	8,162

View the full product specification on [interface.com](https://www.interface.com)



ASHLAR HERRINGBONE

[-CO₂] Less is more like never before.
Shishu Stitch is carbon negative. The materials in our CQuestBioX backing, in combination with specialty yarns and tufting processes, create this carbon negative carpet style.
Visit [interface.com/carbonnegative](https://www.interface.com/carbonnegative) to learn more.

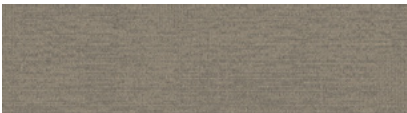


PRODUCT SHISHU STITCH COLOR 106642 SHADE INSTALLED HERRINGBONE

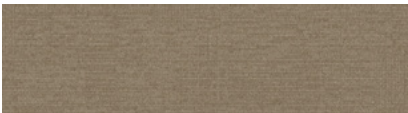




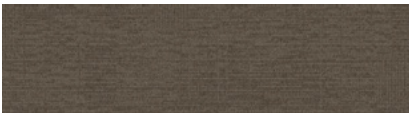
Zen Stitch™ Colorline [-CO₂]



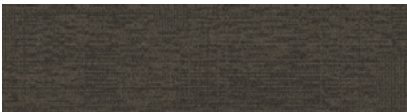
106629 FLINT



106630 ALBA



106631 LIMESTONE



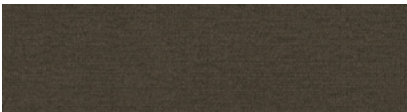
106632 TAUPE



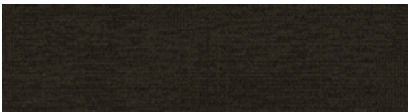
106633 ASH



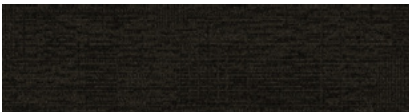
106634 INDIGO



106635 COAL



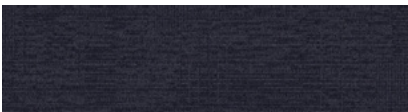
106636 SHADE



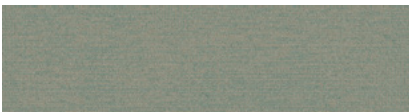
106637 JET



106638 POPPY



106639 SUGILITE

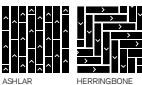


106640 JADEITE

Specifications

Modular, 25cm x 1 m	137470AK0Q
Backing System	CQuest™BioX
Yarn Manufacturer	Universal
Yarn System	Post-Consumer Content Nylon
Color System	100% Solution Dye
Construction	Tufted Textured Loop
Soil/Stain Protection	Protekt ² ™
Pile Thickness	0.044 in., 1.1 mm
Pile Density	9,920

View the full product specification on [interface.com](https://www.interface.com)



ASHLAR

HERRINGBONE

[-CO₂] Less is more like never before.
Zen Stitch is carbon negative. The materials in our CQuestBioX backing, in combination with specialty yarns and tufting processes, create this carbon negative carpet style.
Visit [interface.com/carbonnegative](https://www.interface.com/carbonnegative) to learn more.

Tokyo Texture™ Colorline [-CO₂]



106620 FLINT



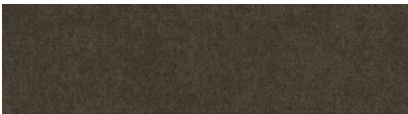
106621 TAUPE



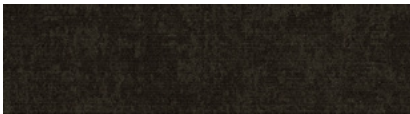
106622 ASH



106623 INDIGO



106624 COAL



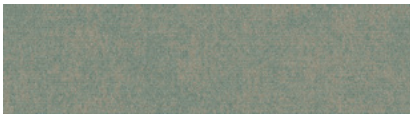
106625 SHADE



106626 JET



106627 POPPY

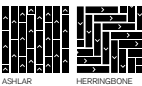


106628 JADEITE

Specifications

Modular, 25cm x 1m	137460AK0Q
Backing System	CQuest™BioX
Yarn Manufacturer	Universal
Yarn System	Post-Consumer Content Nylon
Color System	100% Solution Dye
Construction	Tufted Textured Loop
Soil/Stain Protection	Protekt ⁴² ™
Pile Thickness	0.051 in., 1.3 m
Pile Density	8,470

View the full product specification on [interface.com](https://www.interface.com)



[-CO₂] Less is more like never before.

Tokyo Texture is carbon negative. The materials in our CQuestBioX backing, in combination with specialty yarns and tufting processes, create this carbon negative carpet style. Visit [interface.com/carbonnegative](https://www.interface.com/carbonnegative) to learn more.



PRODUCT TOKYO TEXTURE COLOR 106622 ASH INSTALLED HERRINGBONE





PRODUCT GEISHA GATHER **COLOR** 106582 ALBA **INSTALLED** ASHLAR
PRODUCT ZEN STITCH* **COLOR** 106639 SUGILITE **INSTALLED** HERRINGBONE

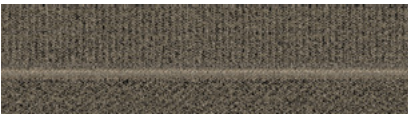




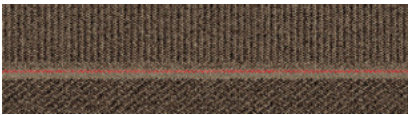


PRODUCT SASHIKO STITCH COLORS 106612 ASH, 106616 JET INSTALLED ASHLAR

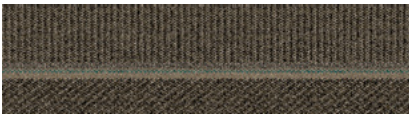
Simple Sash™ Colorline



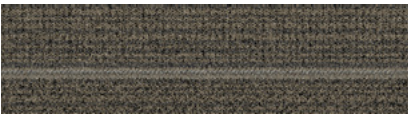
106599 FLINT



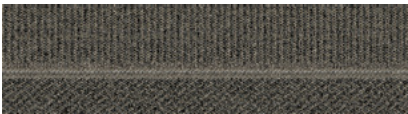
106600 ALBA



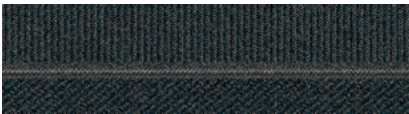
106601 LIMESTONE



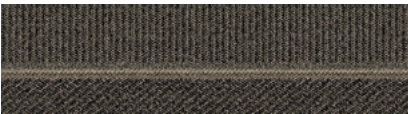
106602 TAUPE



106603 ASH



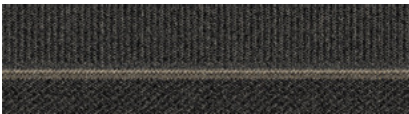
106604 INDIGO



106605 COAL



106606 SHADE

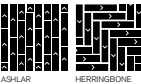


106607 JET

Specifications

Modular, 25cm x 1m	147390AK0G
Backing System	CQuest™ GB
Yarn Manufacturer	Universal
Yarn System	Post-Consumer Content Nylon
Color System	100% Solution Dye
Construction	Tufted Textured Loop
Preservation Protection	Intersept™
Soil/Stain Protection	Protekt ² ™
Pile Thickness	0.088 in., 2.2 mm
Pile Density	7,773

View the full product specification on [interface.com](https://www.interface.com)

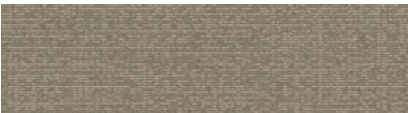




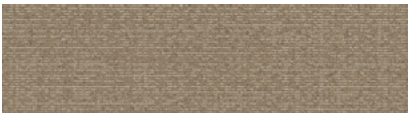
CARPET PRODUCT SIMPLE SASH COLOR 106606 SHADE INSTALLED ASHLAR
LVT PRODUCT WALK OF LIFE COLOR A01202 PUMICE INSTALLED MONOLITHIC



Sashiko Stitch™ Colorline



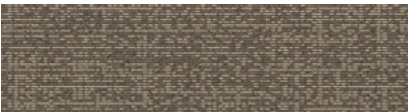
106608 FLINT



106609 ALBA



106610 LIMESTONE



106611 TAUPE



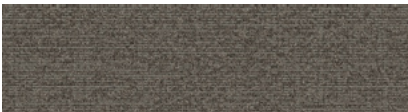
106612 ASH



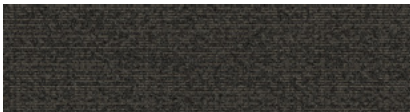
106613 INDIGO



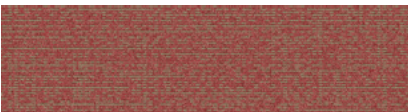
106614 COAL



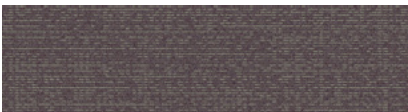
106615 SHADE



106616 JET



106617 POPPY



106618 SUGILITE

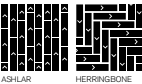


106619 JADEITE

Specifications

Modular, 25cm x 1 m	147400AK0G
Backing System	CQuest™ GB
Yarn Manufacturer	Universal
Yarn System	Post-Consumer Content Nylon
Color System	100% Solution Dye
Construction	Tufted Textured Loop
Preservation Protection	Intersept™
Soil/Stain Protection	Protekt ² ™
Pile Thickness	0.103 in., 2.6 mm
Pile Density	7,340

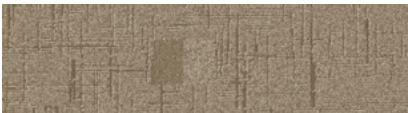
View the full product specification on [interface.com](https://www.interface.com)



Vintage Kimono™ Colorline



106590 FLINT



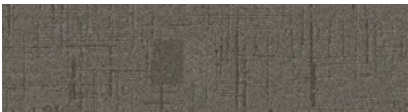
106591 ALBA



106592 LIMESTONE



106593 TAUPE



106594 ASH



106595 INDIGO



106596 COAL



106597 SHADE

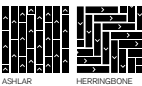


106598 JET

Specifications

Modular, 25cm x 1m	141780AK0G
Backing System	CQuest™ GB
Yarn Manufacturer	Universal
Yarn System	Post-Consumer Content Nylon
Color System	100% Solution Dye
Construction	Tufted Sheared
Preservation Protection	Intersept™
Soil/Stain Protection	Protekt ² ™
Pile Thickness	0.098 in., 2.5 mm
Pile Density	9,551

View the full product specification on [interface.com](https://www.interface.com)







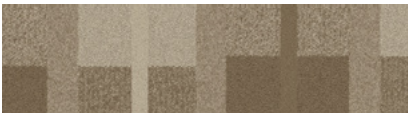
www.interface.com

CARPET PRODUCT GEISHA GATHER **COLOR** 106586 INDIGO
LVT PRODUCT BRUSHED LINES™ **COLOR** A01608 SANDALWOOD **INSTALLED** ASHLAR

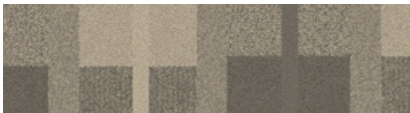
Geisha Gather™ Colorline



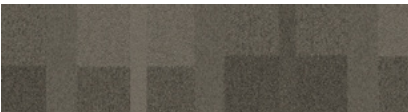
106581 FLINT



106582 ALBA



106583 LIMESTONE



106584 TAUPE



106585 ASH



106586 INDIGO



106587 COAL



106588 SHADE

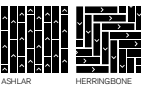


106589 JET

Specifications

Modular, 25cm x 1 m	141770AK0G
Backing System	CQuest™ GB
Yarn Manufacturer	Universal
Yarn System	Post-Consumer Content Nylon
Color System	100% Solution Dye
Construction	Tufted Sheared
Preservation Protection	Intersept™
Soil/Stain Protection	Protekt ² ™
Pile Thickness	0.116 in., 2.9 mm
Pile Density	8,069

View the full product specification on [interface.com](https://www.interface.com)





www.interface.com

PRODUCT ZEN STITCH* **COLOR** 106629 FLINT **INSTALLED** HERRINGBONE
PRODUCT SASHIKO STITCH **COLOR** 106619 JADEITE **INSTALLED** ASHLAR





PRODUCT TOKYO TEXTURE* COLOR 106628 JADEITE
PRODUCT SIMPLE SASH COLOR 106601 LIMESTONE INSTALLED ASHLAR



Why Our Modular Flooring?



Modular Flooring

Performance and flexibility.

Interface's standard backing systems set the industry standard for modular performance. Tiles stay on the floor with no upcurl, no tapping and no rippling effect, yet are easy to selectively replace. Our modular carpet is easier to handle than bulky roll carpet and produces an average of just 3-4% waste compared to roll carpet's average of 14%. And it installs seamlessly with our LVT, no transition strips needed.



TacTiles™

No glue installation. Our revolutionary TacTiles installation system eliminates the need for glue, adhering tiles securely together to form a floor that "floats" for greater flexibility, easier replacement and long-term performance. The result? Less mess, less waste and virtually no VOCs, not to mention an environmental footprint that is over 90% lower than that of traditional glue adhesives. TacTiles are approved for use on GlasBac®, GlasBacRE, CQuest™ GB, Graphlar™ and Graphlex™.



Intersept™

Mold protection. Our proprietary preservative, Intersept, protects our modular carpet against mold growth and odor-causing bacteria—guaranteed. Intersept treated carpet, with proper maintenance, shows no mold or bacterial growth when tested per the ASTM E2471 Standard Test Method. Intersept is EPA approved for safe use in carpet, water insoluble and contains no halogens, heavy metals, phenols or formaldehyde. Intersept is standard in Interface carpet tile products backed with GlasBac, GlasBacRE, CQuestGB, ReadyBac, and CushionBac Renew.



Carbon Neutral Floors™

Learn more about our third-party verified Carbon Neutral Floors. www.interface.com/carbonneutral



Environmental Product Declaration

(EPD) – A statement of product ingredients and environmental impacts over the entire life cycle of a product. A comprehensive life cycle assessment (LCA) is performed to ISO standards to develop an EPD, after which both the EPD and LCA must be third party verified.



Sustainable Assessment for

Carpet – The only carpet sustainability standard in North America that evaluates the environmental impact of carpet for its entire lifecycle.



CRI Green Label Plus – An

independent testing program that identifies carpet and adhesives with very low emissions of VOCs to help improve indoor air quality.

Samples

Order samples at www.interface.com. You'll receive email order confirmations, 24/7 access to order status and more. Not near a computer? You can also request samples by calling one of the numbers below.

United States
1.877.605.1500

Canada
1.866.398.3192

Brazil
+ 55 11 2196 0900

Latin America
+ 52 55 6395 5100

www.interface.com

Register at www.interface.com to:

- Browse products and order samples
- View carpet in a variety of room scenes
- Browse floor designs, change colors, view as a grid or in a room, download and share
- Use our LEED Calculator
- Check order status and inventory availability
- Sign up to get the latest information on Interface products and news

InterCircle Sample Return

Help us close the loop on the carpet sampling process. Through our InterCircle Sample Return program, sample materials stay out of the landfill and are re-used as samples until it is time to recycle them into new carpet. By reducing sample production material and diverting old materials from the landfill, we can reduce our overall environmental footprint.

Call 1.877.605.1500 (U.S.) or 1.866.398.3192 (Canada) to order a sample return bag with a prepaid return label.



ReEntry™

Recyclable is now a reality. Through our ReEntry program, we reclaim all Interface carpet tile and LVT. The result? Products with up to 85% total recycled content, including as much as 25% post-consumer content.



Sustainable Choice

Sustainability. Standard.

Transparency and certified sustainability leadership come standard on Interface products, including published ingredients in HPDs (Health Product Declarations) and published EPDs (Environmental Product Declarations), which are based on full life cycle assessment (LCA). And, all Interface carpet products are certified to the NSF 140 Sustainable Carpet Assessment Standard. Additionally, all Interface flooring and adhesives are 3rd party certified for low VOC emissions through Green Label Plus for carpet tile and both FloorScore and GREENGUARD Gold for LVT. Carpet products made in our US facilities are made with 99% renewable energy.

[-CO₂]

Carbon Negative

Our goal is to make products with the lowest carbon footprint possible. We're innovating on ways to work with recycled content and bio-based materials. The result? Carpet tiles that store carbon, keeping it out of the atmosphere and help to restore the health of the world. Learn more about our carbon negative flooring products at interface.com/carbonnegative.

Note: We use the [-CO₂] product tag to denote that the product shown is carbon negative. When multiple products are shown together, we use an asterisk (*) to specify which of those product(s) the [-CO₂] tag applies to.



RECYCLED
Paper made from
recycled material
FSC® C009723



PLEASE RECYCLE

Printed on 50% post consumer waste (PCW) fiber manufactured using wind power.

All product specifications reflect averages derived from product sample testing, are subject to normal manufacturing and testing tolerances and inherent pattern variances, and may be changed without notice. For more information about these and other important attributes of the product(s) described herein, including recycled content and product warranty information, please see www.interface.com/disclaimer.

We have tried our very best to accurately represent product colors. However, due to the nature of printed materials, color of actual products may vary slightly. Please request a sample to see actual product color.



RECYCLED
Paper made from
recycled material
FSC® C009723



PLEASE RECYCLE

Printed on 50% post consumer waste (PCW)
fiber manufactured using wind power.

We have tried our very best to accurately
represent product colors. However, due to
the nature of printed materials, color of actual
products may vary slightly. Please request a
sample to see actual product color.

www.interface.com

United States Headquarters

1280 West Peachtree Street NW
Atlanta, GA 30309
1.800.634.6032

Canadian Headquarters

233 Lahr Drive
Belleville, ON K8N 5S2
1.800.267.2149 ext.52128

Brazilian Headquarters

Rua Surubim, 577 - Conjuntos
73/74 7º Andar
04571-050 - São Paulo - SP
+ 55 11 2196 0900

Latin American Headquarters

Montes Urales # 415 Piso 6
Col. Lomas de Chapultepec
Mexico City, CDMX, C.P. 11000
Mexico
+ 52 55 2791 6812

CIM # IFS00863 10/2020



Climate change is undeniable. And
reversible. Our mission is to prove it.
**Join the #ClimateTakeBack and
help create a climate fit for life.**