



# Detours & Detours Ahead

**Interface®**



Detours™ & Detours Ahead™

---

The main road might be the accepted way to go, but an alternative route can make for a much more interesting journey. Thanks to Mr. Frost, we know that taking the road "less traveled by" can make all the difference.

Detours and Detours Ahead steer our familiar 50cm squares in an all new direction. The bold, angular design makes it seem as though these patterns are moving in more than one direction, activating the floor in a spirited way. Pattern plays across the surface like streams of light and shadows in Detours Ahead and with flickers of bright color added to highlight Detours.

Break the routine, choose a different road and discover what's new in Detours and Detours Ahead.







PRODUCT DETOURS COLOUR ONYX/ROJO INSTALLED MONOLITHIC  
PRODUCT ON LINE™ COLOUR POPPY INTSALLED PATTERN BY TILE

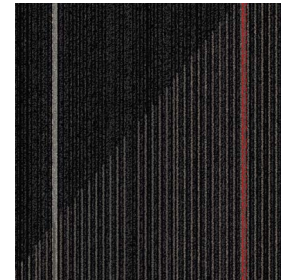




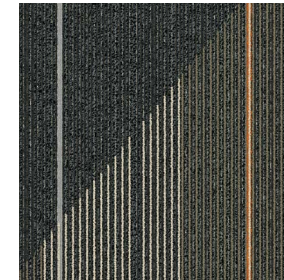
## Detours Colour Range



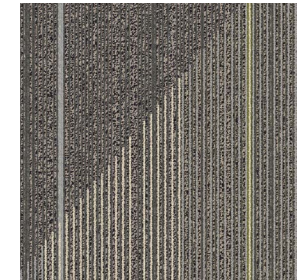
7962001 SLATE/VERDE PRIMAVERA



7962002 ONYX/ROJO



7962003 STEEL/GRIS PARDO



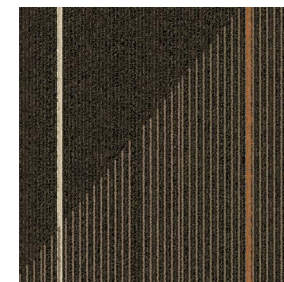
7962004 PEWTER/VERDE PRIMAVERA



7962074 SAGE/AZUL CLARO



7962006 TOPAZ/AZUL VERDOSO



7962007 WALNUT/NARANJA



7962008 TARRAGON/AMARILLO

## Specifications

Style Code	7962
Product Construction	Tufted Textured Loop Pile
Yarn System	100% Recycled Solution Dyed Nylon
Machine Gauge	1/12
Pile Thickness	2.0mm (± 0.5mm)
Total Thickness	5.5mm (± 0.5mm)
Tile Size	50 x 50cm
Area of Use	Commercial Heavy Use
Lifetime Antimicrobial	Intersept®
Soil / Stain Protection	Protekt <sup>2</sup> ®

View the full product specification on [interface.com](http://interface.com)

## Installation Methods



ASHLAR



BRICK



MONOLITHIC



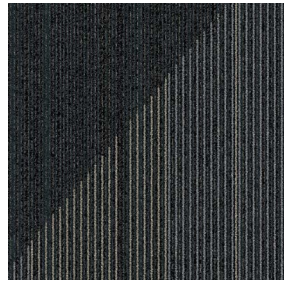
NON DIRECTIONAL



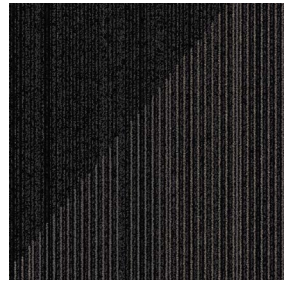
QUARTER-TURN



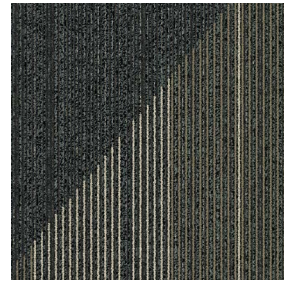
## Detours Ahead Colour Range



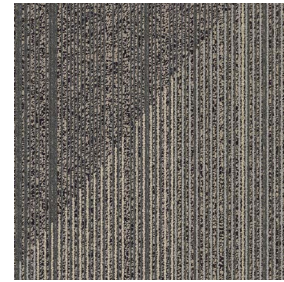
8284001 SLATE TONAL



8284002 ONYX TONAL



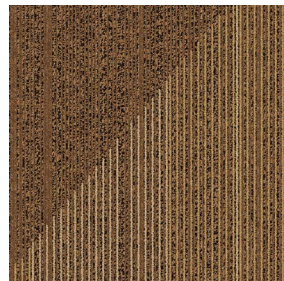
8284003 STEEL TONAL



8284004 PEWTER TONAL



8284005 SAGE TONAL



8284006 TOPAZ TONAL



8284007 WALNUT TONAL



8284008 TARRAGON TONAL

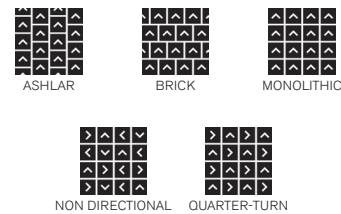


## Specifications

Style Code	8284
Product Construction	Tufted Textured Loop Pile
Yarn System	100% Recycled Solution Dyed Nylon
Machine Gauge	1/12
Pile Thickness	2.0mm (± 0.5mm)
Total Thickness	5.5mm (± 0.5mm)
Tile Size	50 x 50cm
Area of Use	Commercial Heavy Use
Lifetime Antimicrobial	Intersept®
Soil / Stain Protection	Protekt <sup>2</sup> ®

View the full product specification on [interface.com](https://www.interface.com)

## Installation Methods



PRODUCT DETOURS AHEAD COLOUR SAGE TONAL INSTALLED BRICK



## Why Our Modular Flooring?



### Modular Flooring

*Performance and flexibility.* Interface's standard backing systems set the industry standard for modular performance. Tiles stay on the floor with no upcurl, no tapping and no rippling effect, yet are easy to selectively replace. Our modular carpet is easier to handle than bulky roll carpet and produces an average of just 2-5% waste compared to roll carpet's average of 15%. And it installs seamlessly with our LVT, no transition strips needed.



### ReEntry

At Interface, an *end of life solution* of our products is a reality. ReEntry is our innovative programme to reclaim materials used in our product. Taking back our product at end of life is a service we provide our customers to ensure that none of the products they use will end up in landfill. Whether it is recycling into new product or re-purposing, we see our customer's waste as an opportunity for new product life.



### TacTiles®

*No glue installation.* Our revolutionary TacTiles installation system eliminates the need for glue, adhering tiles securely together to form a floor that "floats" for greater flexibility, easier replacement and long-term performance. The result? Less mess, less waste and virtually no VOCs, not to mention an environmental footprint that is over 90% lower than that of traditional glue adhesives.



### Intersept®

*Mold protection.* Our proprietary preservative, Intersept, protects our modular carpet against mould growth and odour-causing bacteria—guaranteed. Intersept treated carpet, with proper maintenance, shows no mould or bacterial growth when tested as per the ASTM E2471 Standard Test Method. Intersept is EPA-approved for safe use in carpet, water insoluble and contains no halogens, heavy metals, phenols or formaldehyde.



### Protekt2®

*Stain protection.* The life and performance of your flooring is extended with Protekt<sup>2</sup>, our patented stain resistant protection. Protekt<sup>2</sup> uses advanced technology to provide a lasting barrier against permanent soiling and staining, which simplifies the cleaning process and enhances the longevity of your carpet. Protekt<sup>2</sup> is product specific, please refer to individual product specifications for details.



### Health Product Declaration (HPD) –

A transparency tool for evaluating whether a product supports Green Chemistry. As part of our work on Health and Materials, Interface continuously reduces the environmental and health impacts of our products through elimination of materials of concern.



### 15-Year Warranty

Interface products are warranted for 15 years against excessive surface wear, edge ravel, backing separation, shrinking, stretching and static electricity even under castor chair conditions.



### Local Manufacturing

We combine local responsiveness with a global experience. Being part of the same communities as our customers, we foster collaborative, committed, and productive relationships. Our carpet tiles are manufactured in Australia and China, contributing to local economies and the environment.

All Interface manufacturing facilities in the Asia Pacific region maintain registration to ISO 9001 Quality Management Systems and ISO 14001 Environmental Management Systems.

## Third Party Certifications



### Environmental Product Declaration (EPD)

The Environmental Product Declaration (EPD) is a third party verified environmental certification classified as Type III that quantifies and verifies the lifecycle impacts of products and goods according to the International Standards Organization (ISO) 14025, 14040, 14044 and EN 15804. EPDs help customers that are environmentally driven to evaluate the performance of a product and to make the best decision when choosing a product. Interface EPDs can be found on [interface.com](http://interface.com).



### Global GreenTag GreenRate - Level A

Global GreenTag's GreenRate certification is a product rating system recognised by the Green Building Council of Australia and Green Building Council of New Zealand. Its assessment scheme aligns to the Green Star® Responsible Products program. All Interface products are certified "Level A".



### Environmental Certification Scheme - Level 4

ECS-certified carpet manufacturers must adhere to a code of practice that details performance standards for raw materials, manufacturing, in-service use and end-of-life treatment. Interface flooring holds the highest grading under ECS.



### NSF Certification

NSF International develops public health standards and certification programs that help protect the world's food, water, consumer products and environment. Interface carpet tile products are certified "Gold".



### CRI Green Label Plus

The Carpet and Rug Institute (CRI) Green Label Plus sets higher standards for indoor air quality and ensures that customers are purchasing the very lowest emitting products on the market. Interface Carpet Tiles and TacTiles have fulfilled the requirements for this certification.



### Singapore Green Building Product (SGBP)

The SGBP certification is designed to evaluate and certify building products that meet specific sustainability and environmental performance criteria. The certification scheme helps building professionals identify products that are sustainable and more carbon efficient. Interface carpet tile products are certified "Leader" and LVT products are at "Excellent" Level.



### Best Practice Guidelines for PVC

Our product proudly holds the Best Environmental Practice (BEP) PVC certification, a recognition of compliance with stringent environmental and social criteria in PVC manufacturing. This certification is a key contributor to Green Star certification, aligning with the GBCA's Responsible Products Framework. Our commitment to BEP guidelines demonstrates our dedication to environmental responsibility and product excellence.

Our EPDs and certifications contribute credits towards Green Building Council's Green Star® Responsible Products program.

Green Star is the Green Building Council of Australia's sustainability rating system for the built environment. It is used to rate new and existing buildings, new fit-outs, and new precinct developments. The Green Building Council of Australia recognises Responsible Products that may contribute to a Green Star rating through its Responsible Credits.

Production specifications are subject to normal manufacturing tolerances and may be changed without notice. The visibility of joints may vary based on colour and pattern. Slight variation in colour among different production lots are normal and should be considered in the overall installation plan. We have tried our very best to accurately represent product colours. However, due to the nature of printed materials, colour of actual products may vary slightly. Please request a sample to see actual product colour. Products covered by manufacturer's written warranty only. All other warranties, including without limitation any implied warranties of merchantability or fitness for particular purpose, are hereby disclaimed. Contact your representative for written warranty information.



**[www.interface.com](http://www.interface.com)**

**Australia**

Interface Australia  
local toll free: 1800 804 361

**India**

Interface India  
tel: +91 76249 17934

**South East Asia**

Interface Asia  
tel: +65 6478 1510

**South Korea**

Interface South Korea  
tel: +82 2 555 1734

**Japan**

Interface Japan  
tel: +81(0)3-6892-5513

**Beijing**

Interface China  
tel: +86 10 6590 7810

**Hong Kong**

Interface China  
tel: +852 2802 0838

**Shanghai**

Interface China  
tel: +86 21 6340 3868