



Cities Collection by Interface Hospitality™ introduces four luxurious new patterns : Roman Holiday™, Big Apple™, City of Angels™ and LA Confidential™

Roman Holiday™

Racing through Rome on a Vespa, ancient architecture rises up beside you as you wind through the narrowest alleys, past a fountain, past a piazza. Like a map of the old city, Roman Holiday carves meandering paths across a surface of deep, sumptuous undertones. A slight twist to the finish adds the right amount of charisma, befitting the eternal city.

Big Apple™

A park is truly the most explicit example of our desire to engage with nature, designing natural settings out of natural elements to recreate the perspective and experience of native landscapes. Big Apple brings the park inside with elegant, organic lines, referencing branches, fissures in stone and the veins in a leaf. Layering fine details with a soft finish, Big Apple bathes every suite in the serenity of the nature.

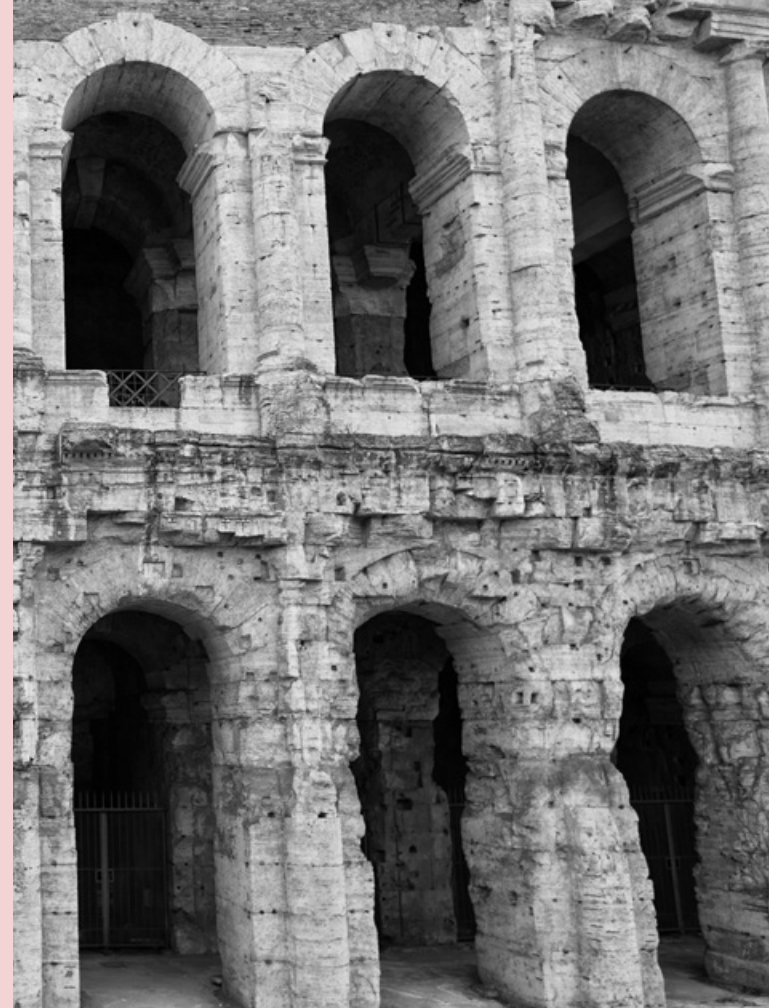
City of Angels™ & LA Confidential™

The earliest works of Agnes Martin (1912-2004) were drawn from the desert terrain and were noted as “essays in discretion”. Ms. Martin, one of the most renowned abstract painters, sketched simple, black and white grids with accents of red lines.

Inspired by this artwork, City of Angels is a repetition of shortlines loosely formed into a pattern—sometimes stippled, sometimes shifting—to create an abstraction of the grid and a hand-drawn effect.

LA Confidential adds colour in an unique way. The accent colour placement adds a new layer and depth to the grid, as if the rug were stamped or veiled with translucent colour.

Explore the possibilities within Cities Collection by Interface Hospitality. Apply your own combination of custom colours to fit the unique property needs, exactly. Turn the page and begin the journey.....





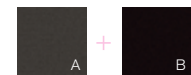
Product
ROMAN HOLIDAY

PRODUCT SPECIFICATIONS

Style Code	2374
Product Construction	Tufted Textured Tip Sheared Loop
Yarn System	100% Recycled Solution Dyed Nylon
Machine Gauge	Tapestry
Pile Thickness	5.5mm +/- 0.5mm
Total Thickness	11.0mm +/- 0.5mm
Tile Size	50x50cm
Area of Use	Commercial - Heavy Use
Lifetime Antimicrobial	Intersept®
Soil/Stain Protection	Protekt2®
Installation Methods	Monolithic



Individual Yarn Placement



Carpet Tile Roman Holiday Colour Ardesia Installed Monolithic



Carpet Tile Roman Holiday Colour Ardesia Installed Monolithic

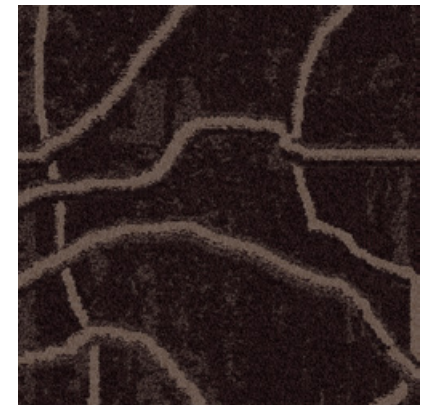




Product
BIG APPLE

PRODUCT SPECIFICATIONS

Style Code	2383
Product Construction	Tufted Textured Tip Sheared Loop
Yarn System	100% Recycled Solution Dyed Nylon
Machine Gauge	Tapestry
Pile Thickness	5.5mm +/- 0.5mm
Total Thickness	9.0mm +/- 0.5mm
Tile Size	50x50cm
Area of Use	Commercial - Heavy Use
Lifetime Antimicrobial	Intersept®
Soil/Stain Protection	Protekt2®
Installation Methods	Monolithic



Individual Yarn Placement



Carpet Tile Big Apple Colour Custom Installed Monolithic



Carpet Tile Big Apple Colour Custom Installed Monolithic





Carpet Tile City of Angels - Colour Jet - Installed Monolithic

Product CITY OF ANGELS

PRODUCT SPECIFICATIONS

Style Code

2384

Product Construction

Tufted Textured Tip Sheared Loop

Yarn System

100% Recycled Solution Dyed Nylon

Machine Gauge

Tapestry

Pile Thickness

4.0mm +/- 0.5mm

Total Thickness

9.0mm +/- 0.5mm

Tile Size

50x50cm

Area of Use

Commercial - Heavy Use

Lifetime Antimicrobial

Intersept®

Soil/Stain Protection

Protekt2®

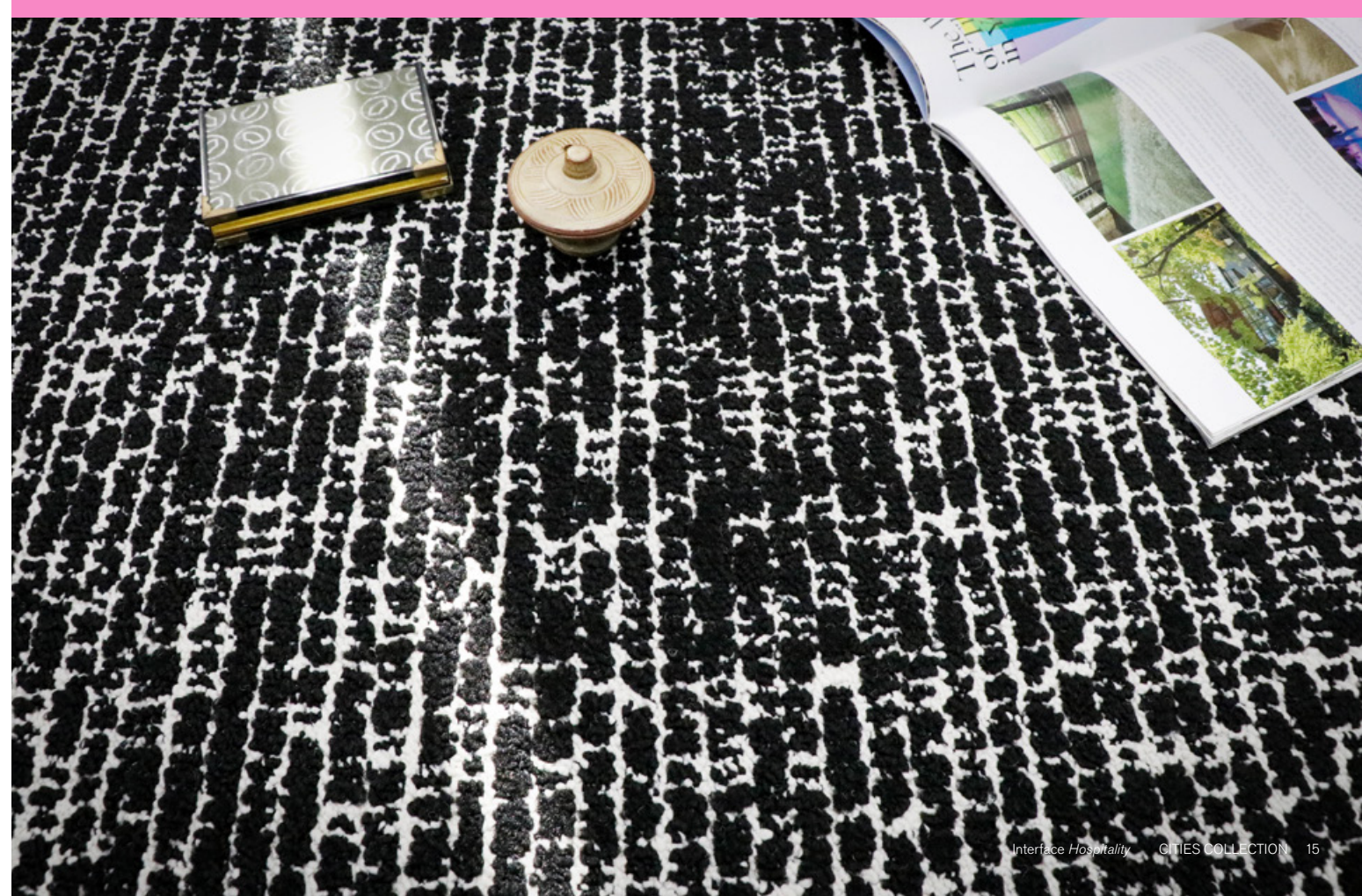
Installation Methods

Monolithic



Individual Yarn Placement







Carpet Tile LA Confidential Colour Stark Installed Monolithic

Product
LA CONFIDENTIAL

PRODUCT SPECIFICATIONS

Style Code	2385
Product Construction	Tufted Textured Tip Sheared Loop
Yarn System	100% Recycled Solution Dyed Nylon
Machine Gauge	Tapestry
Pile Thickness	5.5mm +/- 0.5mm
Total Thickness	9.5mm +/- 0.5mm
Tile Size	50x50cm
Area of Use	Commercial - Heavy Use
Lifetime Antimicrobial	Intersept®
Soil/Stain Protection	Protekt2®
Installation Methods	Monolithic



Individual Yarn Placement





Carpet Tile LA Confidential Colour Sienna Installed Monolithic



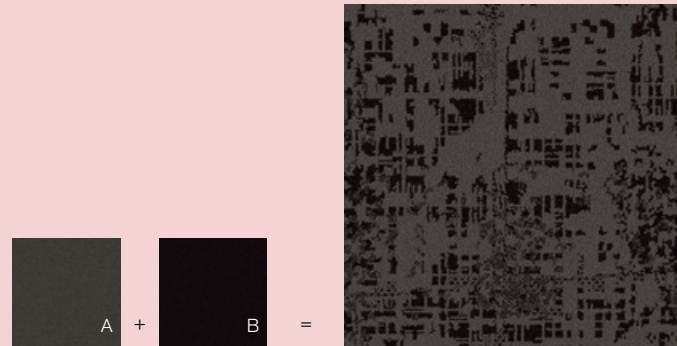
THE JOURNEY BEGINS HERE

Working with your Interface account manager, find the perfect hues for your property. The key below demonstrates how these products can be easily customised to make the pattern and colour uniquely yours.

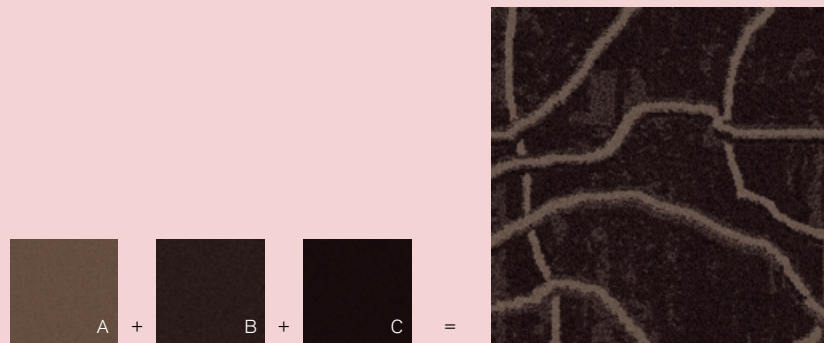
1. Style Selection
Select a product from the Collection..

2. How to Colour

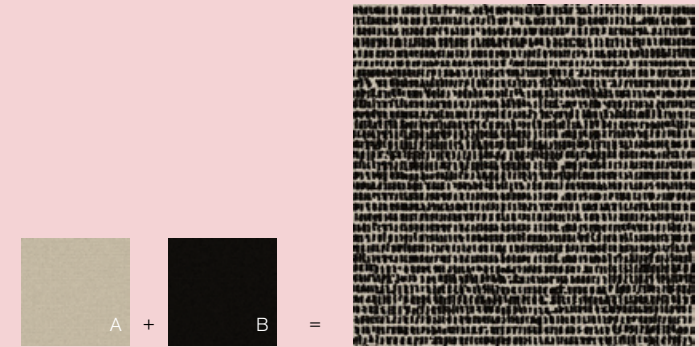
Roman Holiday was designed using your lightest colour value in position A. The B position requires a deeper value to add visual depth to the product to be close in value to create a soft textural background.



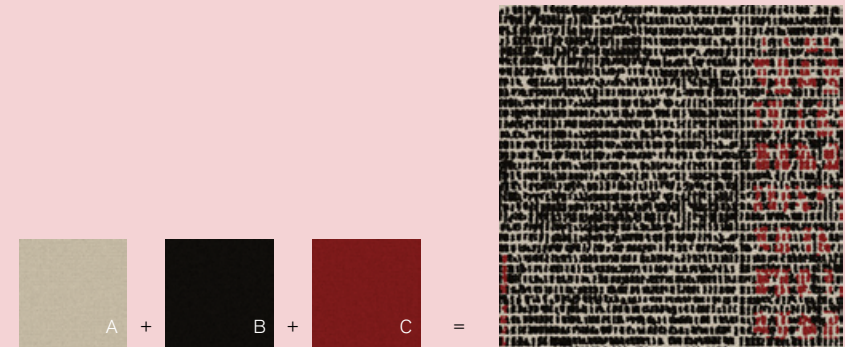
Big Apple was designed using your lightest colour tone in the A position. The B and C position use deeper colour tones which need to be close in value to create a soft textural background.



City of Angels is a two colour product shown here using white in the A position and black in the B position. This product is more successful if you keep a high contrast level between the A & B yarns.



LA Confidential is a three colour product shown here using white in the A position, black in the B position and red in the C position. This product is also more successful if you keep a high contrast level between the A & B yarns. The C position provides an opportunity to add a pop of colour.



3. Samples

When you have coloured the patterns, we can produce samples in your palette. Contact your account manager for sample orders.

SPECIFICATIONS



ROMAN HOLIDAY

Style Code
2374

Product Construction
Tufted Textured Tip Sheared Loop

Yarn System
100% Recycled Solution Dyed Nylon

Machine Gauge
Tapestry

Pile Thickness
5.5mm +/- 0.5mm

Total Thickness
11.0mm +/- 0.5mm

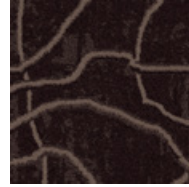
Tile Size
50x50cm

Area of Use
Commercial - Heavy Use

Lifetime Antimicrobial
Intersept®

Soil/Stain Protection
Protekt2®

Installation Methods
Monolithic



BIG APPLE

Style Code
2383

Product Construction
Tufted Textured Tip Sheared Loop

Yarn System
100% Recycled Solution Dyed Nylon

Machine Gauge
Tapestry

Pile Thickness
5.5mm +/- 0.5mm

Total Thickness
9.0mm +/- 0.5mm

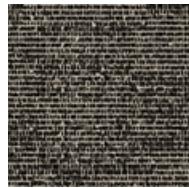
Tile Size
50x50cm

Area of Use
Commercial - Heavy Use

Lifetime Antimicrobial
Intersept®

Soil/Stain Protection
Protekt2®

Installation Methods
Monolithic



CITY OF ANGELS

Style Code
2384

Product Construction
Tufted Textured Tip Sheared Loop

Yarn System
100% Recycled Solution Dyed Nylon

Machine Gauge
Tapestry

Pile Thickness
4.0mm +/- 0.5mm

Total Thickness
9.0mm +/- 0.5mm

Tile Size
50x50cm

Area of Use
Commercial - Heavy Use

Lifetime Antimicrobial
Intersept®

Soil/Stain Protection
Protekt2®

Installation Methods
Monolithic



LA CONFIDENTIAL

Style Code
2385

Product Construction
Tufted Textured Tip Sheared Loop

Yarn System
100% Recycled Solution Dyed Nylon

Machine Gauge
Tapestry

Pile Thickness
5.5mm +/- 0.5mm

Total Thickness
9.5mm +/- 0.5mm

Tile Size
50x50cm

Area of Use
Commercial - Heavy Use

Lifetime Antimicrobial
Intersept®

Soil/Stain Protection
Protekt2®

Installation Methods
Monolithic



Carbon Neutral Floors™

All of our products are carbon neutral and our programme is verified by an independent third party, Bureau Veritas.



All Interface manufacturing facilities in the Asia Pacific region maintain registration to ISO 9001 Quality Management Systems and ISO 14001 Environmental Management Systems.

Production specifications are subject to normal manufacturing tolerances and may be changed without notice. Slight variation in colour among different production lots are normal and should be considered in the overall installation plan. Products covered by manufacturer's written warranty only. All other warranties, including without limitation any implied warranties of merchantability or fitness for particular purpose, are hereby disclaimed. Contact your representative for written warranty information.

www.interface.com

Australia

Interface Australia
local toll free: 1800 804 361

India

Interface India
tel: +91 80 4613 1313

South East Asia

Interface Asia
tel: +65 6478 1510

South Korea

Interface South Korea
tel: +82 2 555 1734

Japan

Interface Japan
tel: +81 3 5733 5211

Beijing

Interface China
tel: +86 10 6590 7810

Hong Kong

Interface China
tel: +852 2802 0838

Shanghai

Interface China
tel: +86 21 6340 3868

08/2020
SM0026T0

Interface® Hospitality



Climate change is undeniable. And reversible. Our mission is to prove it. Join the #ClimateTakeBack and help create a climate fit for life.