

A photograph of a modern interior space featuring a large area of carpet tiles. The tiles are arranged in a pattern of overlapping rectangular sections in various shades of blue, teal, and green, set against a light grey base carpet. In the background, there are several teal-colored chairs with chrome legs, positioned near a large window that offers a view of a lush green landscape with trees and a golf course. The overall atmosphere is bright and contemporary.

Aerial Collection  
Neighborhood

Interface®

## Aerial™ Collection | Neighborhood™ Blocks & Neighborhood Smooth

---

Imagine a neighborhood that goes on for blocks and blocks with winding, tree lined streets connecting people to people and people to parks. It's a neighborhood with a strong sense of community and pride in the colorful characters who keep it lively and relevant. That's what we envisioned when we landed here: Aerial Collection | Neighborhood.

We selected six colors from the strong, neutral palette of the Aerial Collection, and then added six totally new, vibrant colors, taking it to new heights. Neighborhood Blocks draws a pattern in rectilinear lines while Neighborhood Smooth softens to more curvilinear forms. Both constructions are offered in all 12 colorways in our Skinny Planks™ format. You'll find paths to connect each of these new styles with one another or mix in any of Aerial's other styles—AE310, AE311, AE312 or AE313—to create a combination uniquely your own.

Like all the styles in the Aerial Collection, Neighborhood Blocks and Neighborhood Smooth are part of our i2® product family with benefits like mergeable dye lots, which allows various lots to be blended into a single installation, beautifully. This reduces the need for attic stock and makes replacement easy.

Stop by our neighborhood today and have a look around. We think you'll find yourself returning to it again and again.







**PRODUCT** NEIGHBORHOOD BLOCKS **COLOR** 105613 SMOKE/BLOCKS  
**PRODUCT** NEIGHBORHOOD SMOOTH **COLOR** 105628 INK/SMOOTH **INSTALLED** PATTERN BY TILE



[www.interface.com](http://www.interface.com)

**CARPET PRODUCT** NEIGHBORHOOD BLOCKS **COLORS**  
105302 GREIGE/BLOCKS, 105623 DIJON/BLOCKS **INSTALLED** ASHLAR  
**LVT PRODUCT** LEVEL SET™ | TEXTURED STONES **COLOR** A00302 COOL POLISHED CEMENT  
**INSTALLED** NON DIRECTIONAL



PRODUCT NEIGHBORHOOD SMOOTH COLOR 105634 IRON/SMOOTH INSTALLED ASHLAR



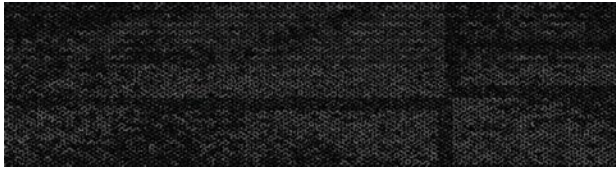




**CARPET PRODUCT** NEIGHBORHOOD SMOOTH **COLOR** 105629 SMOKE/SMOOTH  
**CARPET PRODUCT** AE312 **COLOR** 105410 IRON/ACCENT **INSTALLED** PATTERN BY TILE  
**LVT PRODUCT** LEVEL SET | TEXTURED STONES **COLOR** A00302 COOL POLISHED CEMENT  
**INSTALLED** NON DIRECTIONAL

## Neighborhood™ Blocks Colorline

---



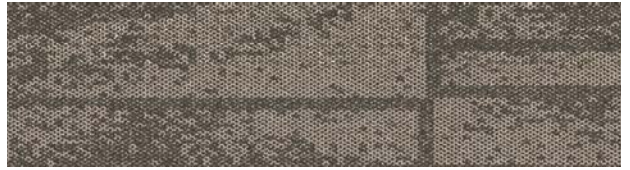
105612 INK/BLOCKS



105302 GREIGE/BLOCKS



105613 SMOKE/BLOCKS



105615 FOG/BLOCKS



105618 IRON/BLOCKS



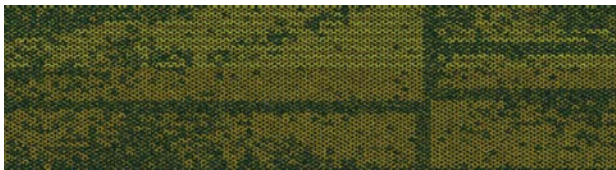
105619 TAUPE/BLOCKS



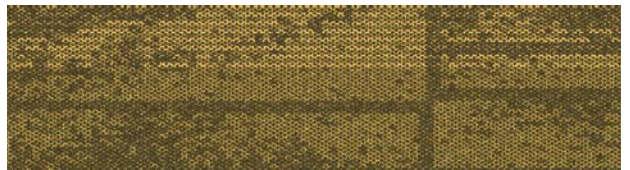
105620 INDIGO/BLOCKS



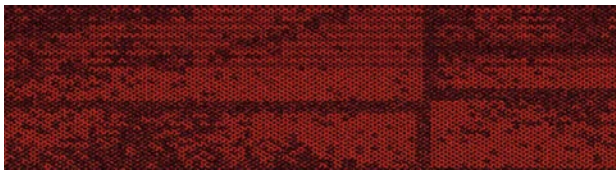
105621 CARIBBEAN/BLOCKS



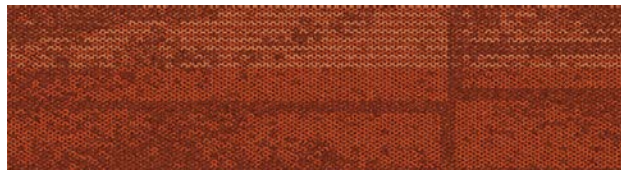
105622 GREENERY/BLOCKS



105623 DIJON/BLOCKS



105625 DRU RED/BLOCKS\*



105303 PERSIMMON/BLOCKS

*\*Dru Red: in loving memory of our beloved Interface Associate, Drusilla Scott*



## Specifications **i2**

Modular, 25cm x 1m	163250AK00
Backing System	GlasBac® Tile
Yarn Manufacturer	Aquafil
Yarn System	100% Recycled Content Type 6 Nylon
Color System	100% Solution Dyed
Construction	Tufted Textured Loop
Preservative Protection	Intersept®
Soil/Stain Protection	Protekt2®
Pile Thickness	0.088 in., 2.2 mm
Pile Density	6,545
Total Recycled Content	71%
Indoor Air Quality	CRI Green Label Plus #GLP0820

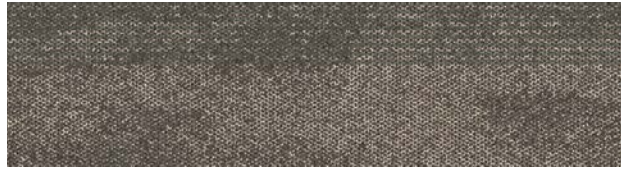


## Neighborhood™ Smooth Colorline

---



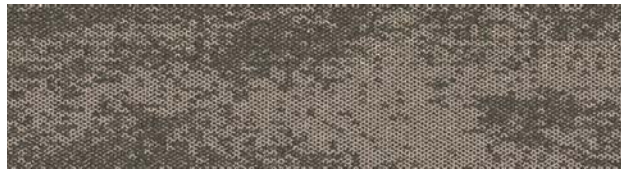
105628 INK/SMOOTH



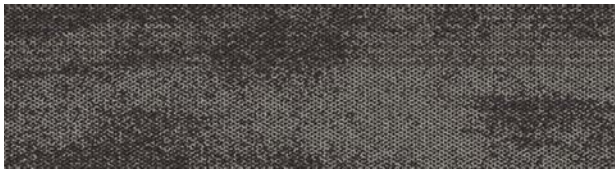
105304 GREIGE/SMOOTH



105629 SMOKE/SMOOTH



105631 FOG/SMOOTH



105634 IRON/SMOOTH



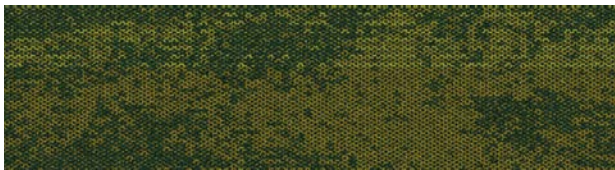
105635 TAUPE/SMOOTH



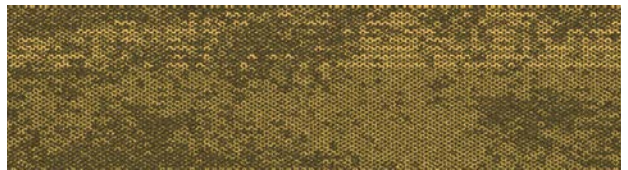
105636 INDIGO/SMOOTH



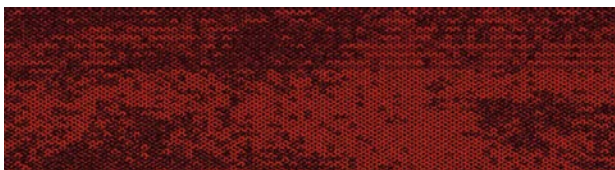
105637 CARIBBEAN/SMOOTH



105638 GREENERY/SMOOTH



105639 DIJON/SMOOTH



105641 DRU RED/SMOOTH\*



105305 PERSIMMON/SMOOTH

*\*Dru Red: in loving memory of our beloved Interface Associate, Drusilla Scott*



## Specifications **i2**

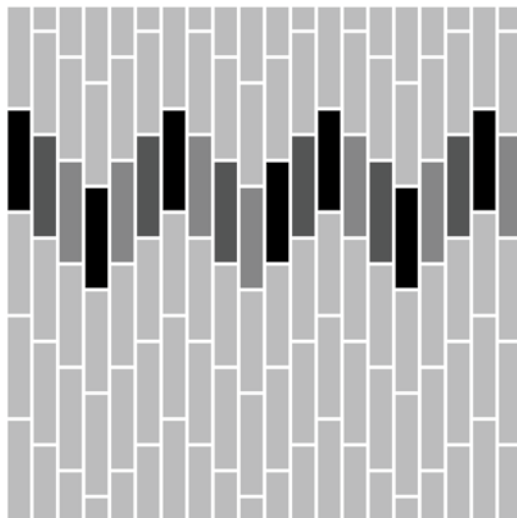
Modular, 25cm x 1m	163260AK00
Backing System	GlasBac® Tile
Yarn Manufacturer	Aquafil
Yarn System	100% Recycled Content Type 6 Nylon
Color System	100% Solution Dyed
Construction	Tufted Textured Loop
Preservative Protection	Intersept®
Soil/Stain Protection	Protekt2®
Pile Thickness	0.079 in., 2.0 mm
Pile Density	7,291
Total Recycled Content	71%
Indoor Air Quality	CRI Green Label Plus #GLP0820



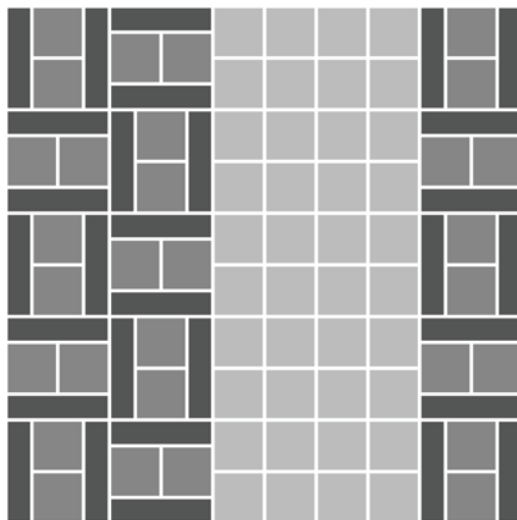
## Design Ideas

Below are floor layouts showing how to create two of the design ideas featured in this brochure.

---



**PRODUCT** NEIGHBORHOOD SMOOTH **COLOR** 105631 FOG/SMOOTH  
**PRODUCT** NEIGHBORHOOD BLOCKS **COLORS** 105620 INDIGO/BLOCKS,  
105621 CARIBBEAN/BLOCKS, 105622 GREENERY/BLOCKS **INSTALLED** PATTERN BY TILE



**CARPET PRODUCT** NEIGHBORHOOD SMOOTH **COLOR** 105629 SMOKE/SMOOTH  
**CARPET PRODUCT** AE312 **COLOR** 105410 IRON/ACCENT **INSTALLED** PATTERN BY TILE  
**LVT PRODUCT** LEVEL SET | TEXTURED STONES **COLOR** A00302 COOL POLISHED CEMENT **INSTALLED** NON DIRECTIONAL

## Why Our Modular Carpet?



### Modular Carpet Tile

*Performance and Flexibility.* Interface's modular carpet tile sets the industry standard for performance. Tiles are designed to stay on the floor with no upcurl, tapping or rippling. Our square and plank tiles are easier to handle, install and maintain. They install with just 3-4% waste – and as little as 1.5% for i2® non directional styles – compared to an average 14% for traditional roll carpet. And our i2 styles are mergeable so tiles from multiple dye lots will always blend, even when selectively replaced years later.



### Cool Floor™

*The Low Carbon Option.* Help stop climate change. ALL Interface modular flooring sold in North America is third party verified climate neutral Cool Floor. We start by using low-carbon materials and manufacturing processes, then Cool Floor zeros out all remaining greenhouse gas (GHG) emissions associated with the entire life cycle of your flooring, from raw material extraction through use and recycling.



### TacTiles®

*No Glue Installation.* Our revolutionary TacTiles installation system eliminates the need for glue, adhering tiles securely together to form a floor that "floats" for greater flexibility, easier replacement and long-term performance. The result? Less mess, less waste and virtually no VOCs, not to mention an environmental footprint that is over 90% lower than that of traditional glue adhesives.



### Intersept®

*Mold Protection.* Our proprietary preservative, Intersept, protects our modular carpet against mold growth and odor-causing bacteria — guaranteed. Intersept treated carpet, with proper maintenance, shows no mold or bacterial growth when tested per the ASTM E2471 Standard Test Method. Intersept is EPA approved for safe use in carpet, water insoluble and contains no halogens, heavy metals, phenols or formaldehyde.



### ReEntry®

*Recyclable is Now a Reality.* Through our ReEntry program and partnerships with our fiber suppliers and recycling centers throughout North America, separated Type 6 and 6,6 nylon are recycled into new 6 and 6,6 nylon, while separated GlasBac®RE and similar competitor backings are recycled into GlasBac® non-virgin PVC backing using our Cool Blue™ technology. The result? Products with up to 89% total recycled content, including as much as 27% post-consumer content.



### Sustainable Choice

*Environmental Responsibility.* Interface was the industry's first to publish an EPD (Environmental Product Declaration), which evaluates consistent factors based on full lifecycle assessment (LCA). We now have published EPDs for 99% of our products globally.

In addition, all Interface products with GlasBacRE backing meet the Platinum level of the NSF/ANSI 140 Sustainable Assessment for Carpet. GlasBac or NexStep® backed products meet the Gold level. All may contribute toward a USGBC or CaGBC LEED Innovation Credit.

## Third Party Certification

### cool floor™

**Cool Floor** – Our third party verified carbon offset program zeroes out all greenhouse gas (GHG) emissions associated with the entire lifecycle of your flooring.



**Environmental Product Declaration (EPD)** – A statement of product ingredients and environmental impacts over the entire life cycle of a product. A comprehensive life cycle assessment (LCA) is performed to ISO standards to develop an EPD, after which both the EPD and LCA must be third party verified.



**Sustainable Assessment for Carpet** – The only carpet sustainability standard in North America that evaluates the environmental impact of carpet for its entire lifecycle.



**CRI Green Label Plus** – An independent testing program that identifies carpet and adhesives with very low emissions of VOCs to help improve indoor air quality.

[www.interface.com](http://www.interface.com)

**United States Headquarters**

1503 Orchard Hill Road  
LaGrange, GA 30240  
1.800.336.0225 ext.56511

**Canadian Headquarters**

233 Lahr Drive  
Belleville, ON K8N 5S2  
1.800.267.2149 ext.52128

**Brazilian Headquarters**

Rua Surubim, 577 - Conjuntos  
73/74 7º Andar  
04571-050 - São Paulo - SP  
+ 55 11 2196 0900

**Latin American Headquarters**

Montes Urales # 415 Piso 6  
Col. Lomas de Chapultepec  
México City, D.F. 11000  
Mexico  
+ 52 55 6395 5100

CIM # IFS00777 09/2017



**Mission Zero®**

our promise to eliminate any negative impact our company may have on the environment by the year 2020.